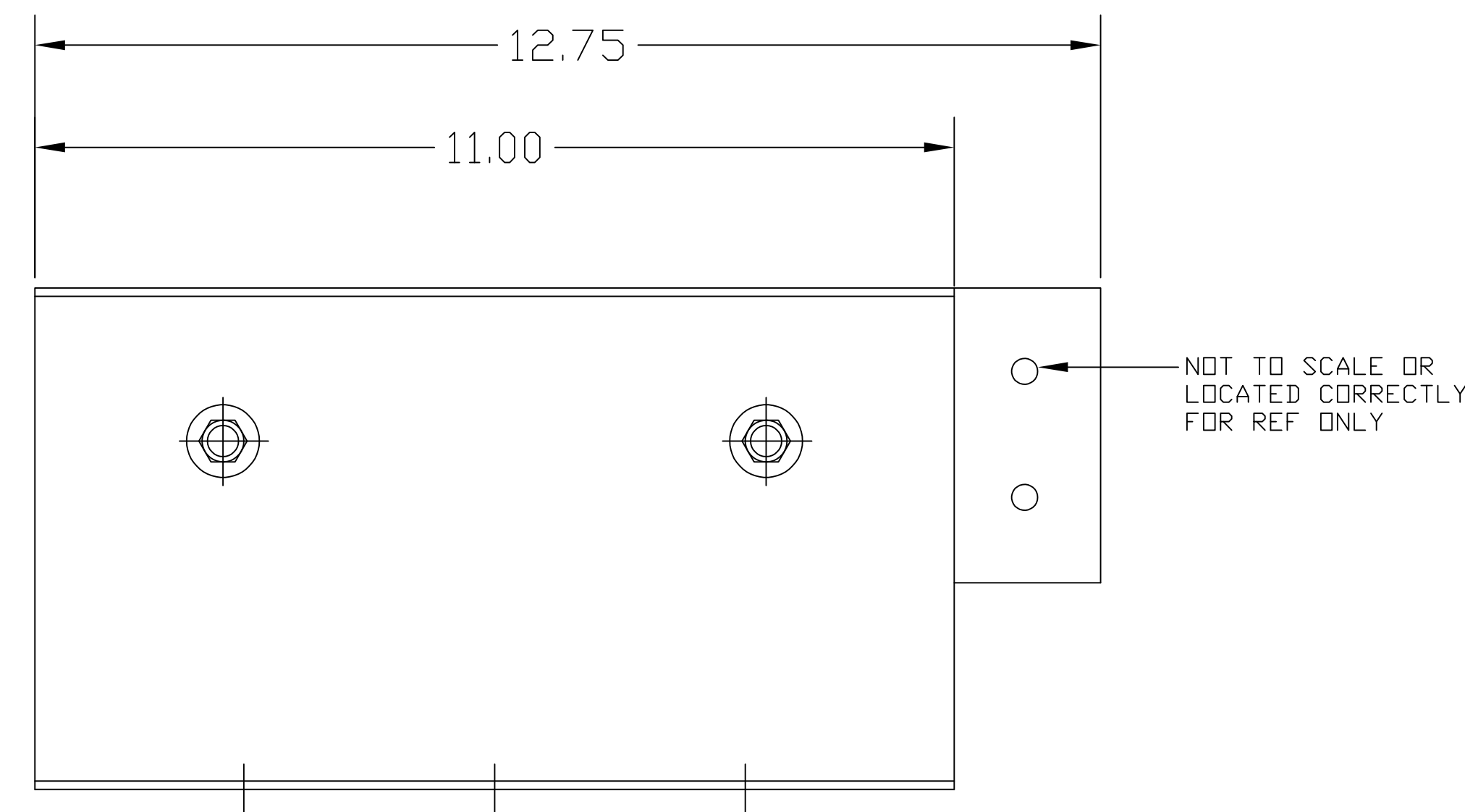
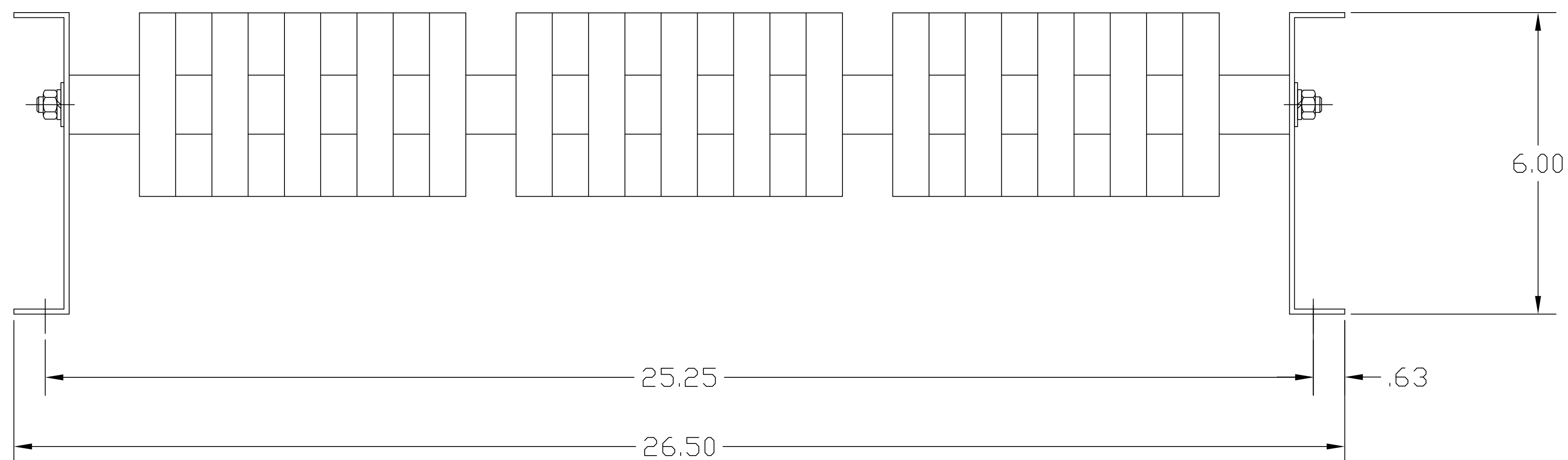



Res, Ass'y, .063  $\Omega$ hm,  
2700W, 3PH



				TOLERANCES (EXCEPT AS NOTED)	 W132 N10611 Grant Drive Germantown, WI 53022
				DECIMAL	
				.XX $\pm$ .25 .XXX $\pm$ .125	
				FRACTIONAL $\pm$ 1/16	
$\Delta$	2673			ANGULAR $\pm$ 1°	DRN. BY RJC
	WAS PART NU. P13134	4/12/10	RJC		DATE 4/12/10
NO	REVISION	DATE	BY		DWG. NO. 24795
					SCALE --
					APRVD.
					B
					SHT.1 OF 1