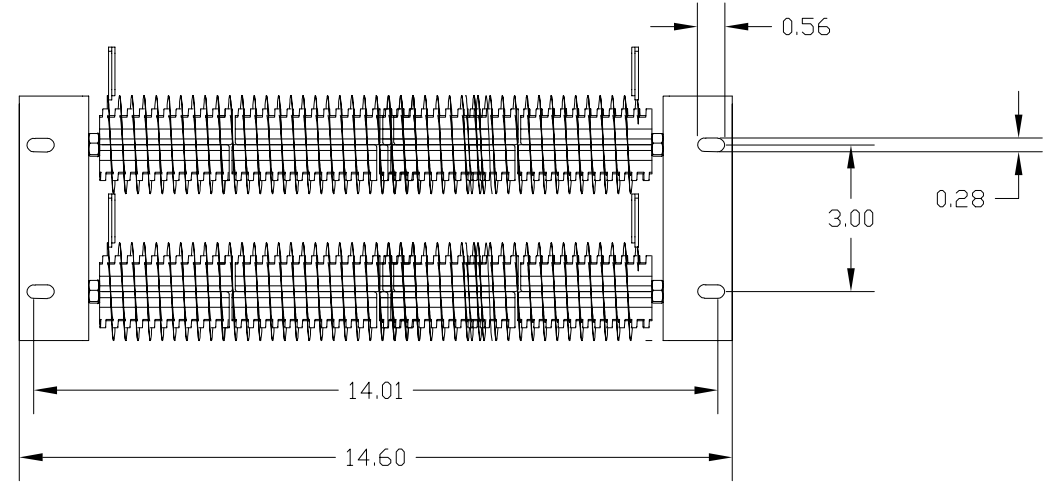
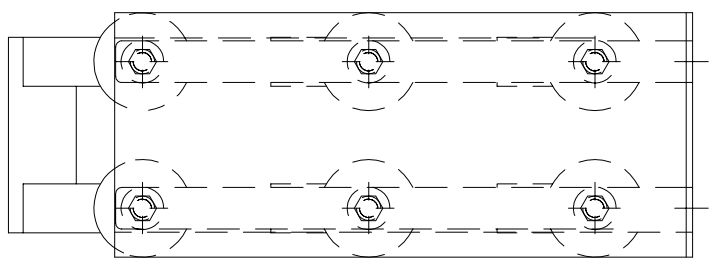
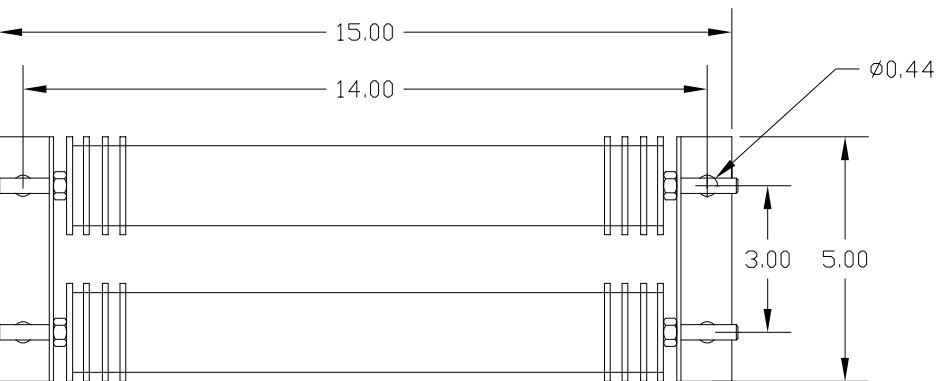
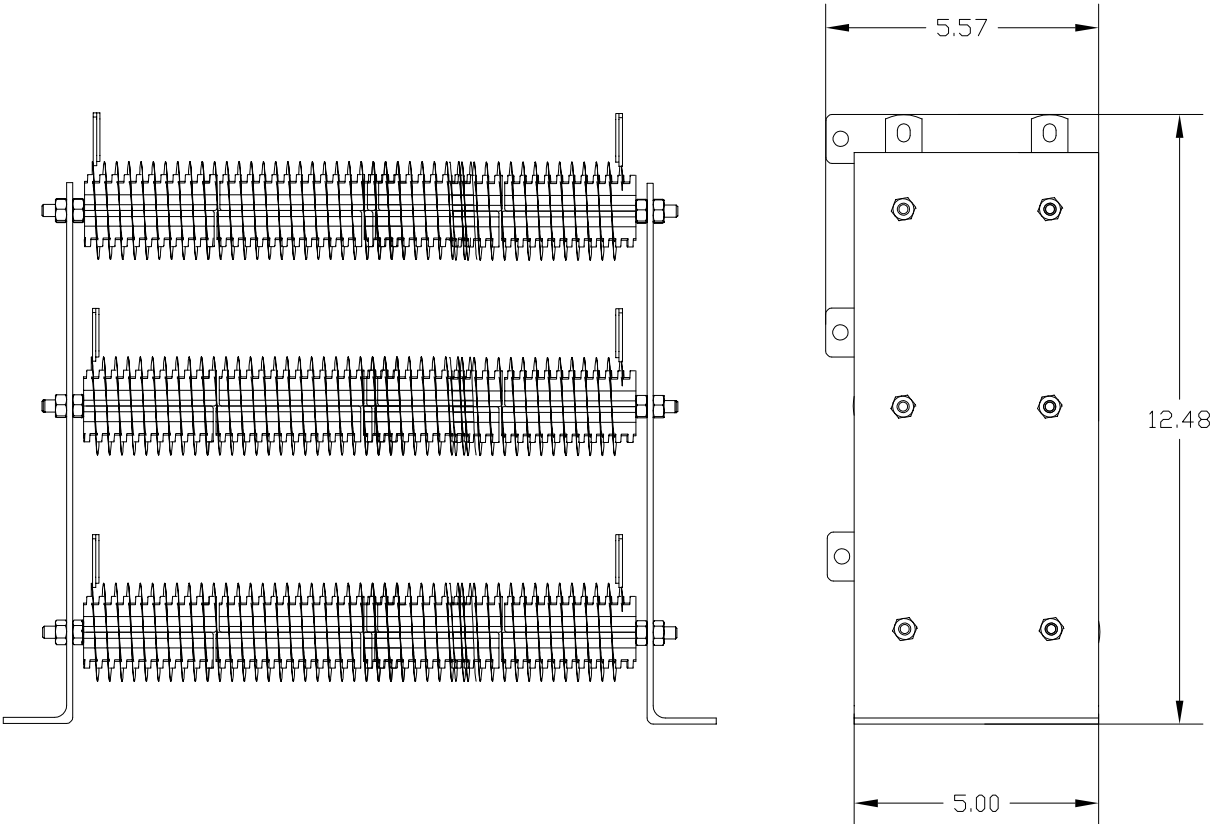
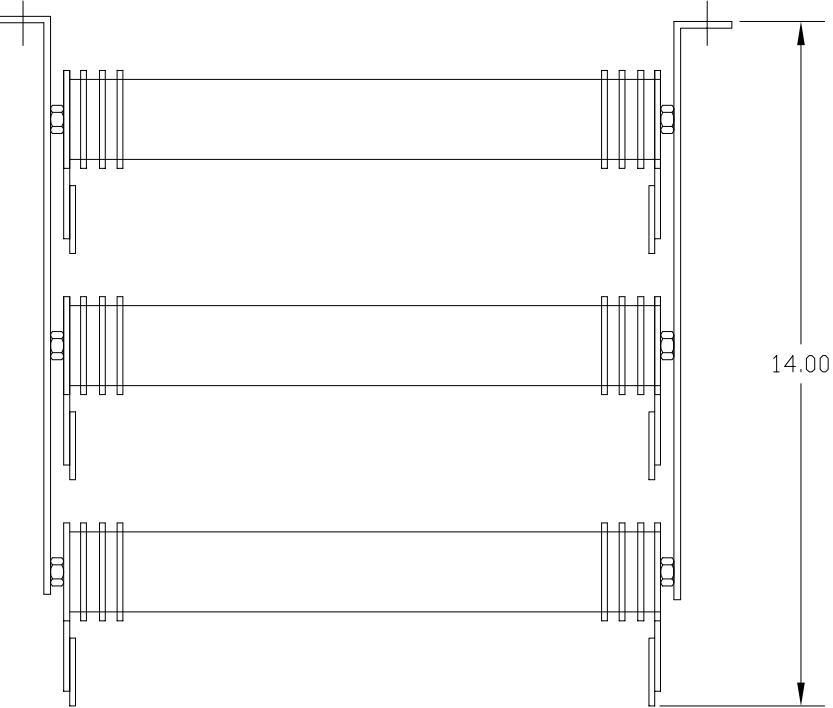
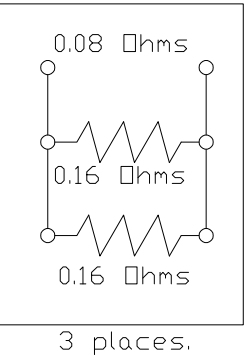


Approx Weight: 24 LBS.

Hubbell, (P15212-24169)
 Res, Ass'y, 0.08 Ω hm, 1745W, 3 PH

USED ON KMG600A

SUPPLIER
 VISHAY MILWAUKEE RESISTOR,
 (CS631745R0800BS009)
 Res, Ass'y, 0.08 Ω hm, 1745W, 3 PH



TCI, LLC CLAIMS PROPRIETARY RIGHTS IN THE MATERIAL HEREIN DISCLOSED. IT IS SUPPLIED WITHOUT PREDJUDICE TO ANY PATENT RIGHTS OF TCI AND MAY NOT BE REPRODUCED OR USED TO MANUFACTURE ANYTHING SHOWN THEREIN WITHOUT WRITTEN PERMISSION FROM TCI.

				TOLERANCES (EXCEPT AS NOTED)
				DECIMAL
				.XX ± .03
				.XXX ± .01
D	4151, Update Description	10/10/17	DSW	FRACTIONAL
C	ADD ALTERNATE TO DWG	7/18/14	DSW	± 1/32
NO	REVISION	DATE	BY	ANGULAR
				± 1/2°

TCI® W132 N10611 Grant Drive
 Germantown, WI 53022

RESISTOR ASSEMBLY
 0.08 OHM, 1745 WATT

DRN. BY: RJC DATE: 6/4/2003 DWG. NO.: 24169
 SCALE: TO FIT SIZE: B SHT. 1 OF 1