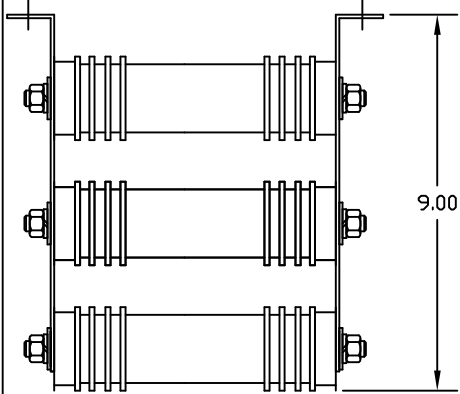


USED ON KMG160A

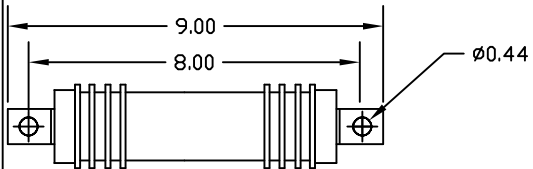


9.00

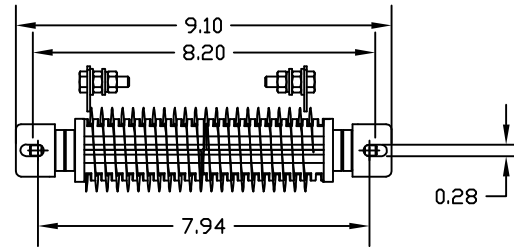
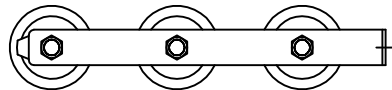
SUPPLIER
POWEROHM RESISTORS, INC.
OR APPVD. EQUIV.

EDGE WOUND RESISTOR ASSEMBLY
P15211-22968

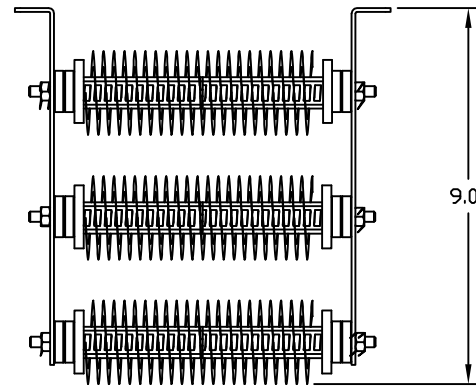
532 WATT
.35 OHMS
7 POUNDS



$\varnothing 0.44$

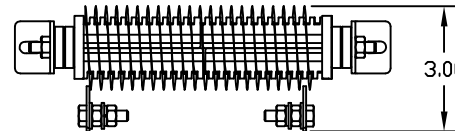


0.28

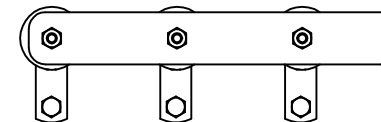


9.01

SUPPLIER
VISHAY MILWAUKEE RESISTOR.
CS630524R3500B8865
3 X 0.35 OHM RESISTORS ON VERTICAL BRACKETS



3.00



TCI, LLC CLAIMS
PROPRIETARY RIGHTS IN
THE MATERIAL HEREIN
DISCLOSED. IT IS
SUPPLIED WITHOUT
PREJUDICE TO ANY
PATENT RIGHTS OF TCI
AND MAY NOT BE
REPRODUCED OR USED
TO MANUFACTURE
ANYTHING SHOWN
THEREIN WITHOUT
WRITTEN PERMISSION
FROM TCI.

NO	3150 ADD ALTERNATE TO DWG	7/18/14	DSW
	REVISION	DATE	BY

TOLERANCES (EXCEPT AS NOTED)
DECIMAL
.XX ± .03
.XXX ± .01
FRACTIONAL
± 1/32
ANGULAR
± 1/2°

TCI® W132 N10611 Grant Drive
Germantown, WI 53022

RESISTOR ASSEMBLY
0.35 OHM, 532 WATT

DRAWN BY	RJC	DATE	6/6/2003	DWG. NO.	22968
SCALE	TO FIT	SIZE	B	SHT. 1 OF 1	