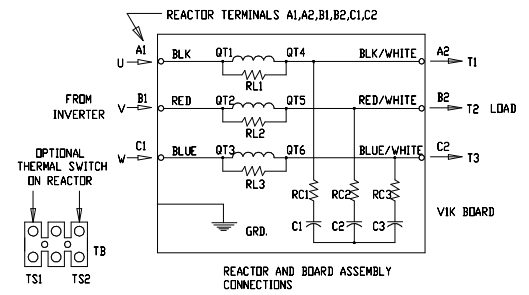


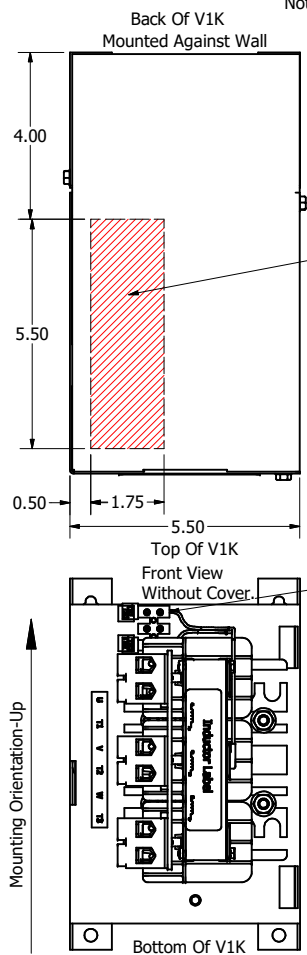
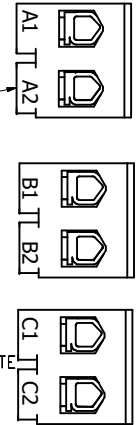
Note: Maintain Clearance of 3 Inches On All Sides To Other Equipment.
See V1K Installation Guide For Terminal Wire Size And Torque Information.

V1K Part Number	Max Voltage	Amps	Phase	Weight (LBS)
V1K16A01EX*	600	16	3	15
V1K18A01EX*	600	18	3	15
V1K21A01EX*	600	21	3	15
V1K25A01EX*	600	25	3	15
V1K27A01EX*	600	27	3	15

* = (Blank) - No Thermal Switch
* = T - "Thermal Switch Option"



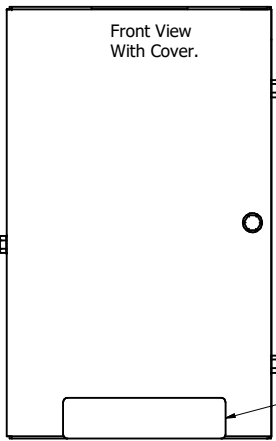
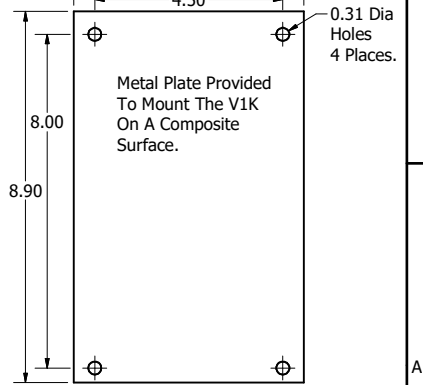
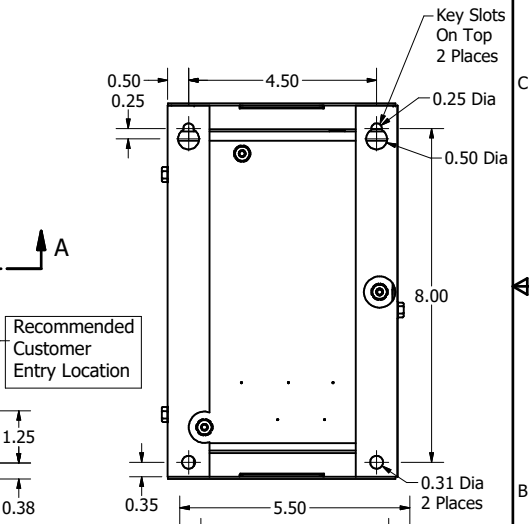
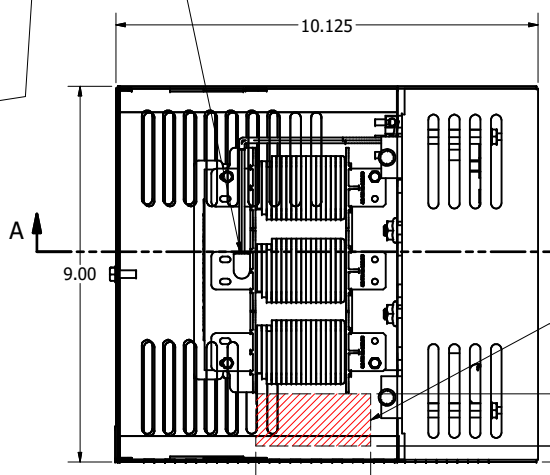
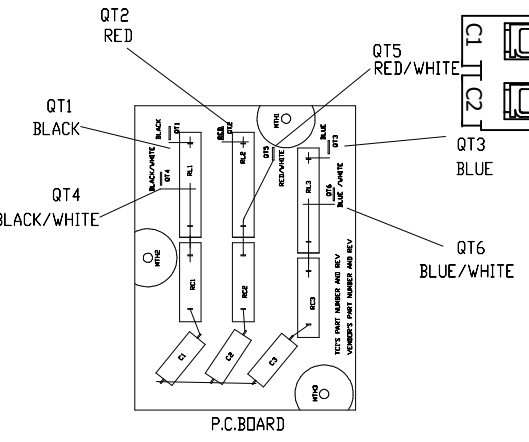
(Customer Connections) Markings On Terminal Block For Reference Only.



Recommended Customer Entry Location

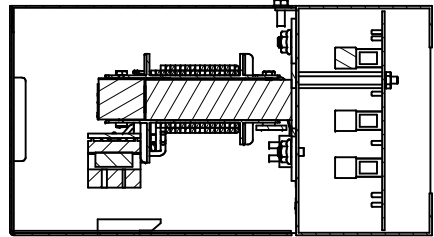
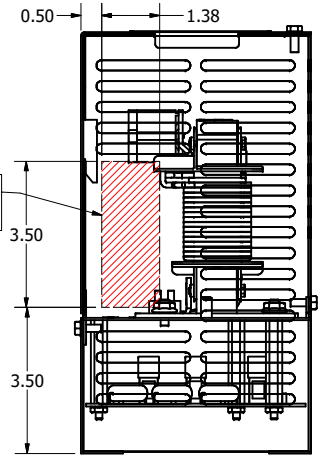
"Optional": Thermal Switch (T) Option in Part Number

(Option) "Thermal Switch Placement"



Recommended Customer Entry Location

Information Label.



SECTION A-A

Customer Is Responsible For Installation to Meet All National And Local Electrical Codes.

Material(s) Shall be RoHS Compliant

DIMENSIONS IN INCHES (EXCEPT AS NOTED)		TOLERANCES (EXCEPT AS NOTED)		DECIMAL		FRACTIONAL		ANGULAR		THE INFORMATION AND DESIGN CONTAINED IN THIS DRAWING ARE CONFIDENTIAL AND THE PROPRIETARY PROPERTY OF ALLIANT INC. AND ITS SUBSIDIARIES. NEITHER THIS DESIGN NOR ANY INFORMATION CONTAINED IN THIS DRAWING MAY BE REPRODUCED OR DISCLOSED TO OTHERS WITHOUT THE EXPRESS WRITTEN CONSENT OF ALLIANT INC. AND ITS SUBSIDIARIES.		DESIGNED BY DSW		DATE 5/19/26		DRAWN BY DSW		DATE 5/19/26		SCALE 1:2.3		DEN. NO. 109939DG		SIZE C		SHEET 1 OF 1	
NO		ECO		REVISION		DATE		BY		SCALE		DEN. NO.		SIZE		SHEET		OF		1		1		1			



V1K, Heavy Duty, Enclosed Type 1
16A, 18A, 21A, 25A, 27A