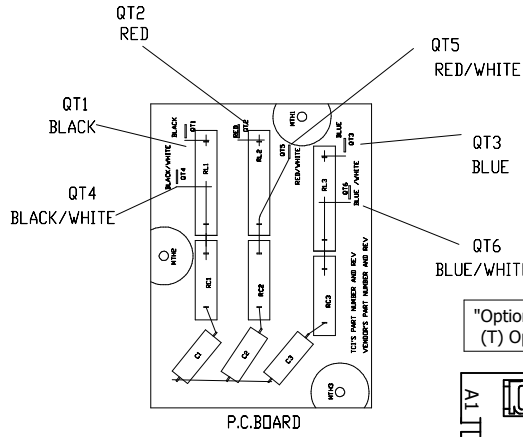


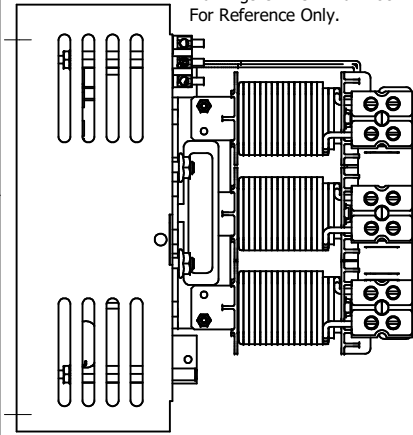
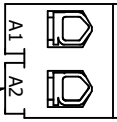
See V1K Installation Guide For Terminal Wire Size And Torque Information.

Note: Maintain Clearance of 3 Inches On All Sides To Other Equipment.

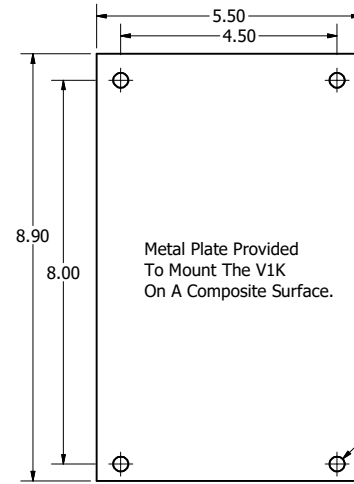
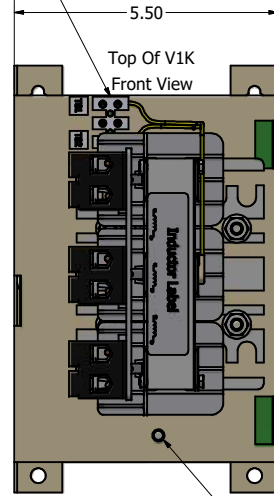
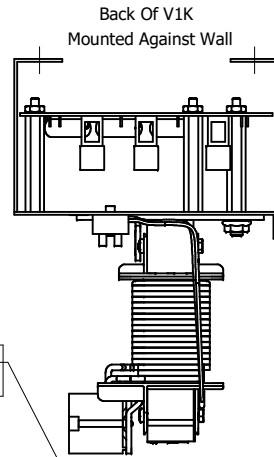


(Customer Connections) Markings On Terminal Block For Reference Only.

"Optional": Thermal Switch (T) Option in Part Number



Mounting Orientation-Up

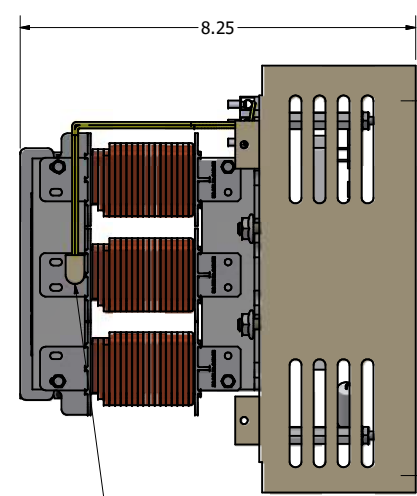


V1K Open Units				
V1K Part Number	Max Voltage	Amps	Phase	Weight (LBS)
V1K16A00EX*	600	16	3	12
V1K18A00EX*	600	18	3	12
V1K21A00EX*	600	21	3	12
V1K25A00EX*	600	25	3	12
V1K27A00EX*	600	27	3	12

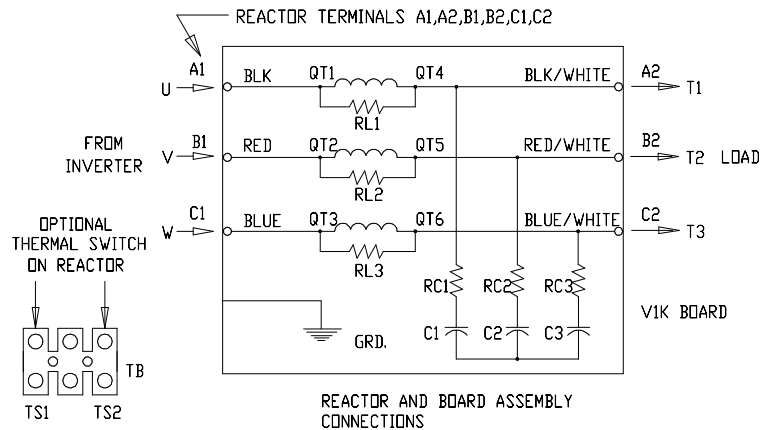
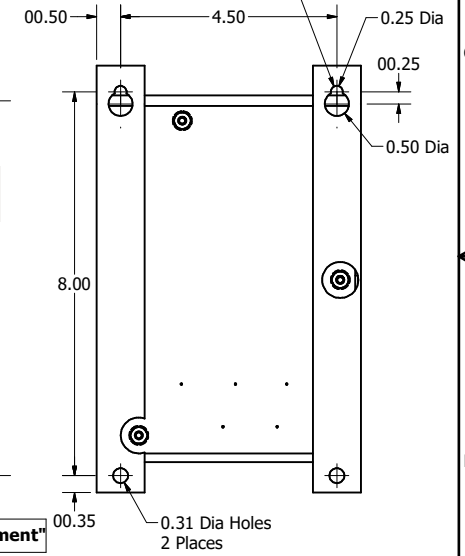
\* = (Blank) - No Thermal Switch  
\* = T - "Thermal Switch Option"

0.31 Dia Holes 4 Places.

Key Slots on Top 2 Places.



(Option) "Thermal Switch Placement"



Customer Is Responsible For Installation to Meet All National And Local Electrical Codes.

Material(s) Shall be RoHS Compliant

DIMENSIONS IN INCHES (EXCEPT AS NOTED) TOLERANCES (EXCEPT AS NOTED) DECIMAL .XX ± .25 .XXX ± .10 FRACTIONAL ± 1/32 ANGULAR ± 1°		THE INFORMATION AND DESIGN CONTAINED IN THIS DRAWING ARE CONFIDENTIAL AND THE PROPRIETARY PROPERTY OF ALLIANT INC. AND ITS SUBSIDIARIES. NEITHER THIS DESIGN NOR ANY INFORMATION CONTAINED IN THIS DRAWING MAY BE REPRODUCED OR DISCLOSED TO OTHERS WITHOUT THE EXPRESS WRITTEN CONSENT OF ALLIANT INC. AND ITS SUBSIDIARIES.		DESIGNED BY	DATE	SCALE	DRAWN BY	DATE	SCALE	DEN. NO.	SIZE	SHT. 1 OF 1
				DSW	5/19/26	1/2	DSW	5/19/26	1/2	109938DG	C	
				Alliant Power						W132N10611 Grant Drive Germantown, WI 53022 © 2026 Alliant Inc.		
				V1K, Heavy Duty, Open 16A, 18A, 21A, 25A, 27A								
				NO ECO REVISION								