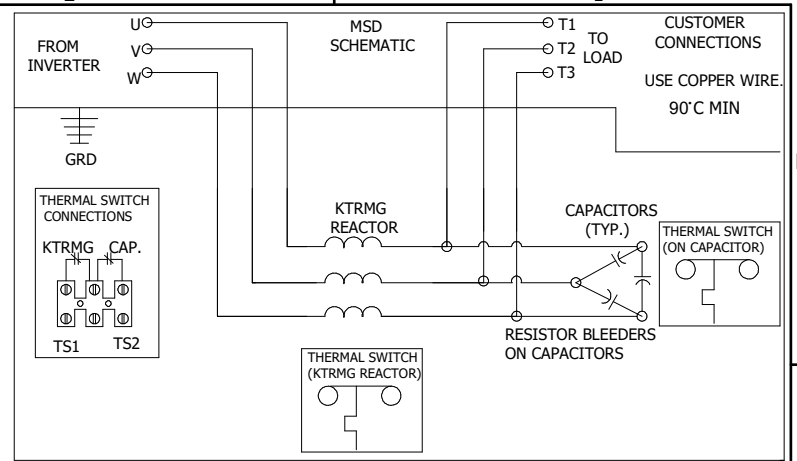
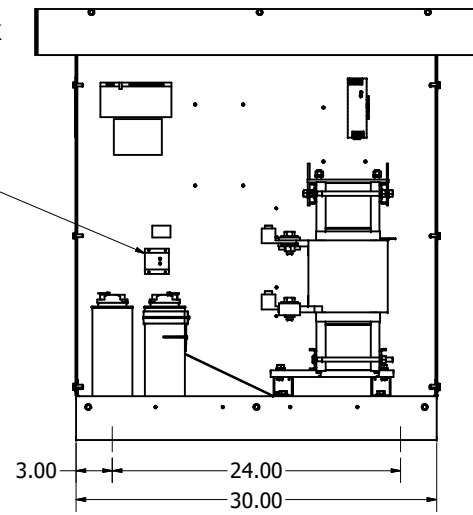
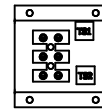


NOTE: FOR TERMINAL TORQUE  
SEE IOM MANUAL.



TERMINAL BLOCK  
ASSEMBLY,  
MOUNTED ABOVE  
CAPACITORS



MSD PART NUMBER	HP	VOLTAGE	CURRENT	WEIGHT	PRESSURE TERMINAL WIRE RANGE
MSD0192A300	75	240V	192 AMPS	470 LBS	(2) 350MCM-6AWG

CUSTOMER IS RESPONSIBLE FOR INSTALLATION  
TO MEET ALL NATIONAL AND LOCAL ELECTRICAL CODES.

DIMENSIONS IN INCHES (EXCEPT AS NOTED) TOLERANCES (EXCEPT AS NOTED) DECIMAL .XX ± .25 .XXX ± .10 FRACTIONAL ± 1/16 ANGULAR ± 1°	THE INFORMATION AND DESIGN CONTAINED IN THIS DRAWING IS CONFIDENTIAL AND THE PROPRIETARY PROPERTY OF ALLIANT INC. AND ITS SUBSIDIARIES. NEITHER THIS DESIGN NOR ANY INFORMATION CONTAINED IN THIS DRAWING MAY BE REPRODUCED OR DISCLOSED TO OTHERS WITHOUT THE EXPRESS WRITTEN CONSENT OF ALLIANT INC. AND ITS SUBSIDIARIES.		DESIGNED BY TJS	DATE 04/23/26		W132N10611 Grant Drive Germantown, WI 53022 © 2026 Alliant Inc.
	MSD 192A, Sinewave Filter 480V/ 3 Phase/ 60Hz, Type 0			SCALE 1:8	DEN. NO. 109933DG	SIZE C
NO	ECO	REVISION	DATE	BY		