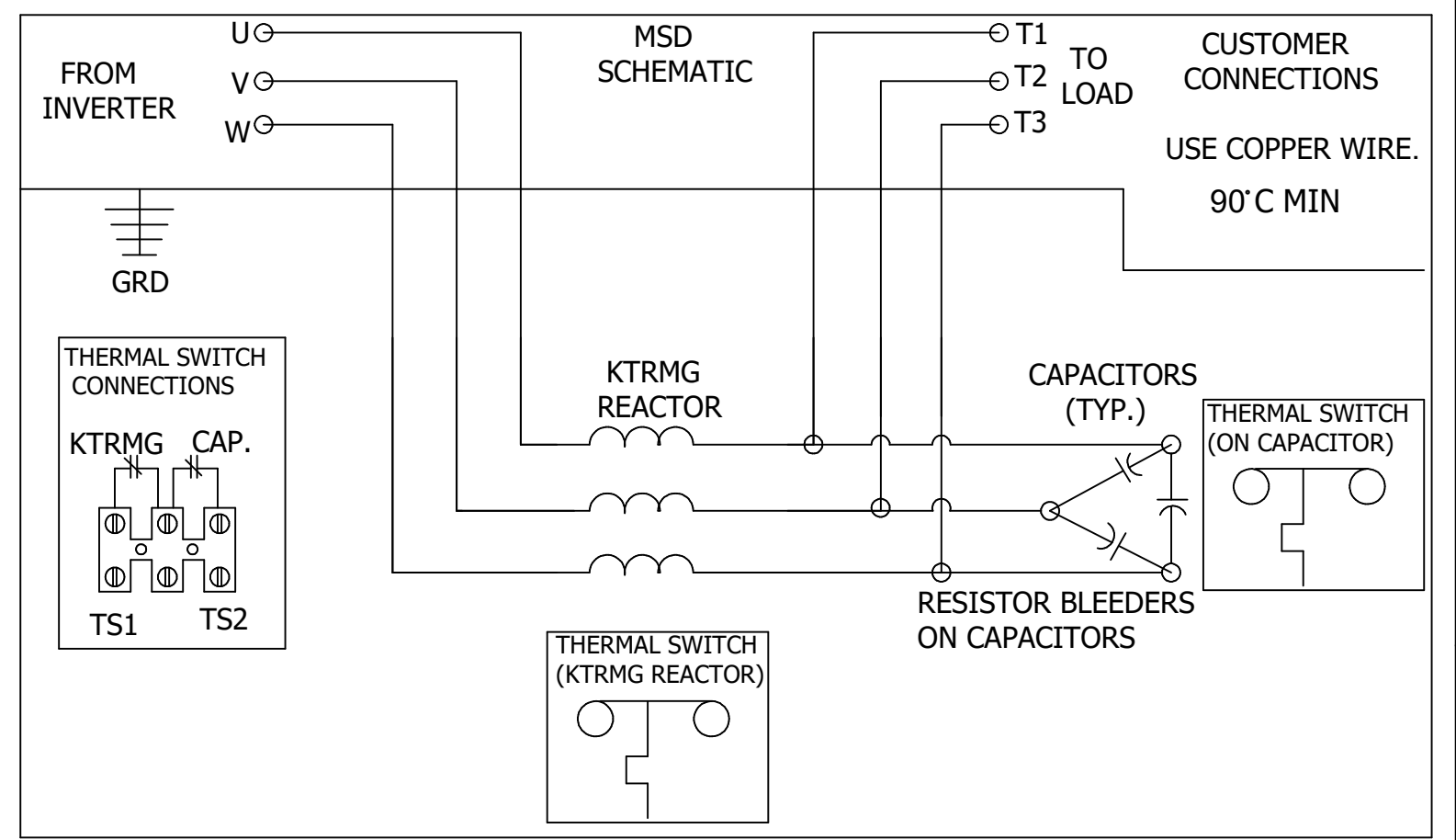
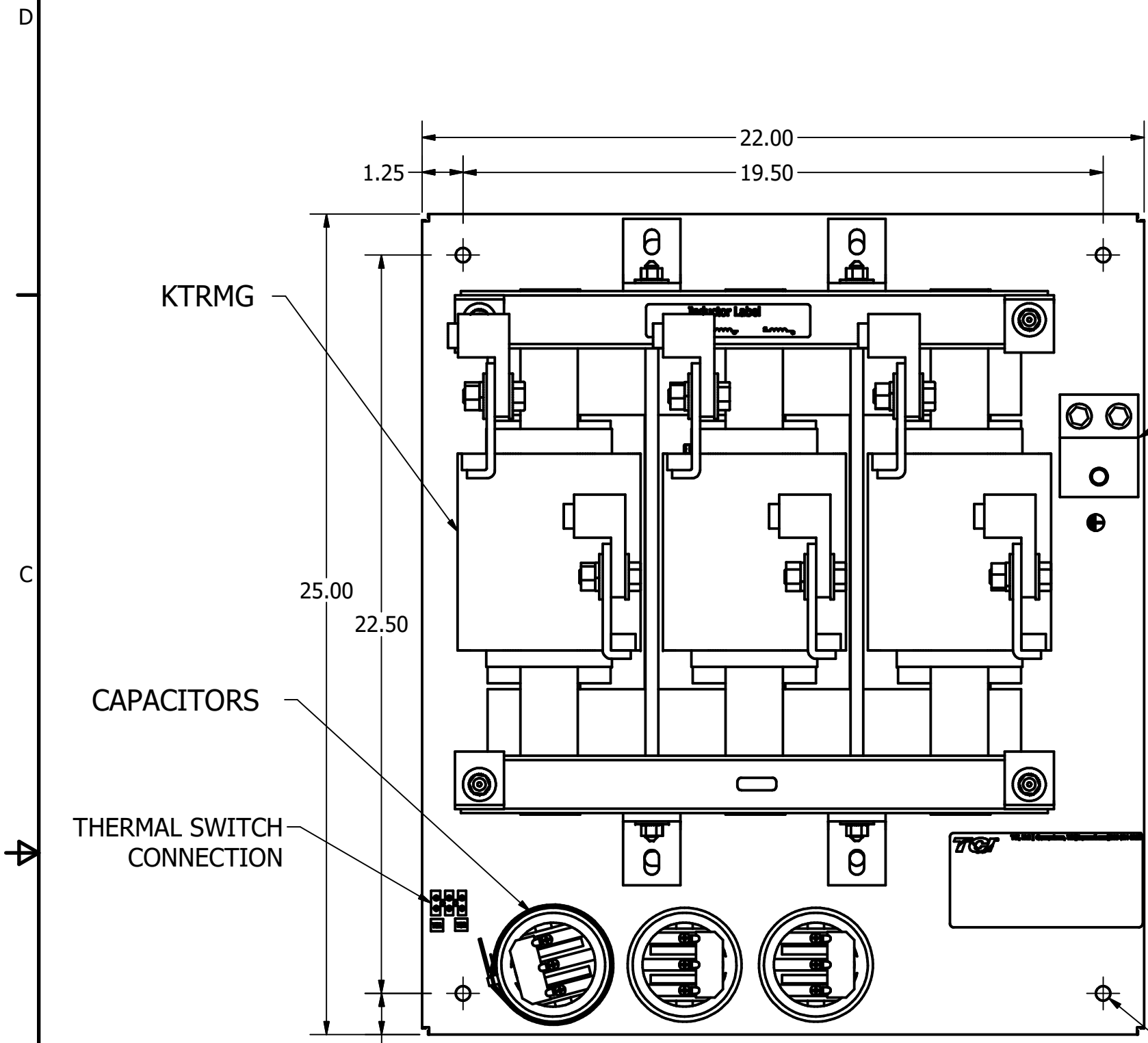
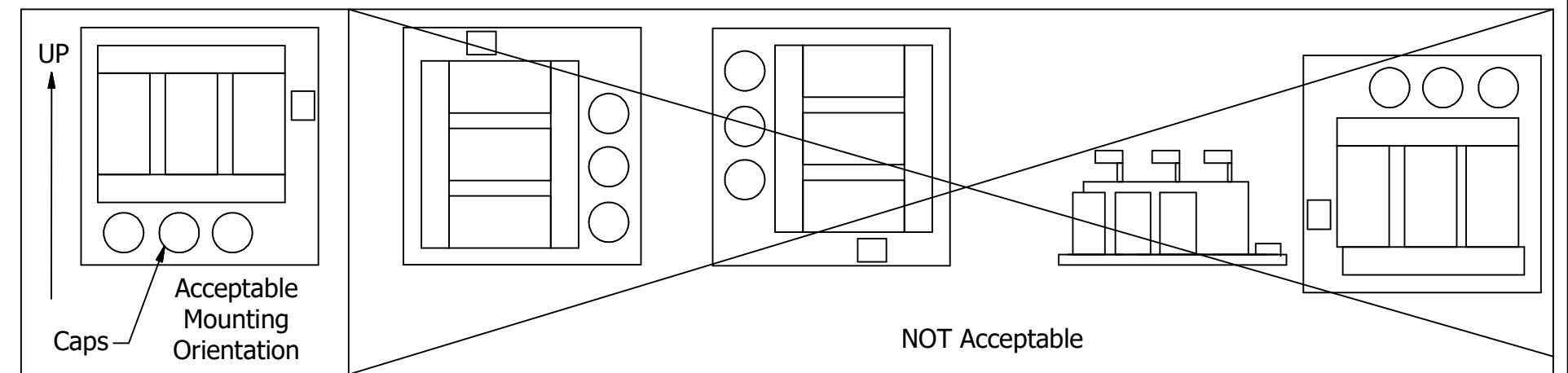


MSD PART NUMBER	HP	VOLT	CURRENT	WEIGHT	PRESSURE TERMINAL WIRE RANGE	X
MSD0104B000	40	240V	104 A	330 LBS	(2) 350MCM-6AWG	9 IN
MSD0130B000	50	240V	130 A	350 LBS	(2) 350MCM-6AWG	9 IN
MSD0154B000	60	240V	154 A	360 LBS	(2) 350MCM-6AWG	9 IN
MSD0192B000	75	240V	192 A	370 LBS	(2) 350MCM-6AWG	9 IN

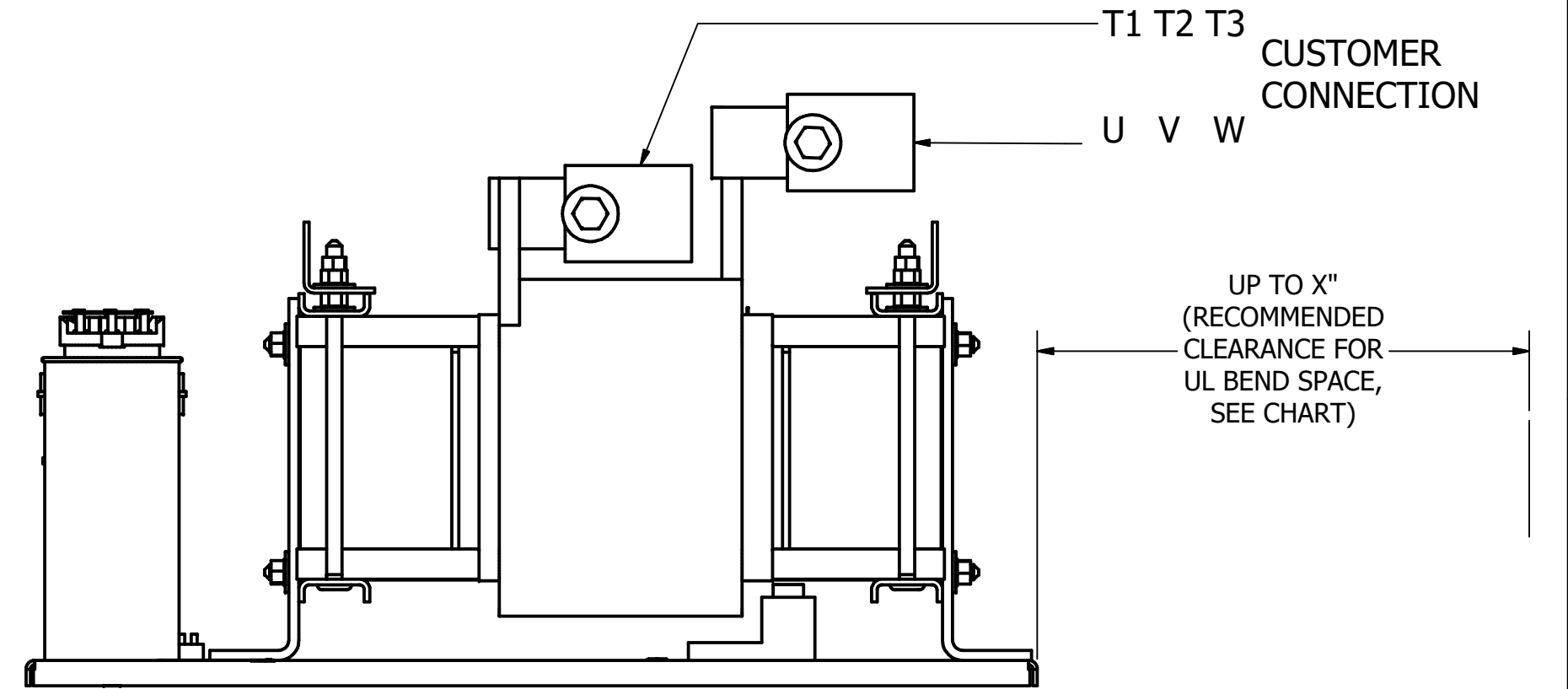
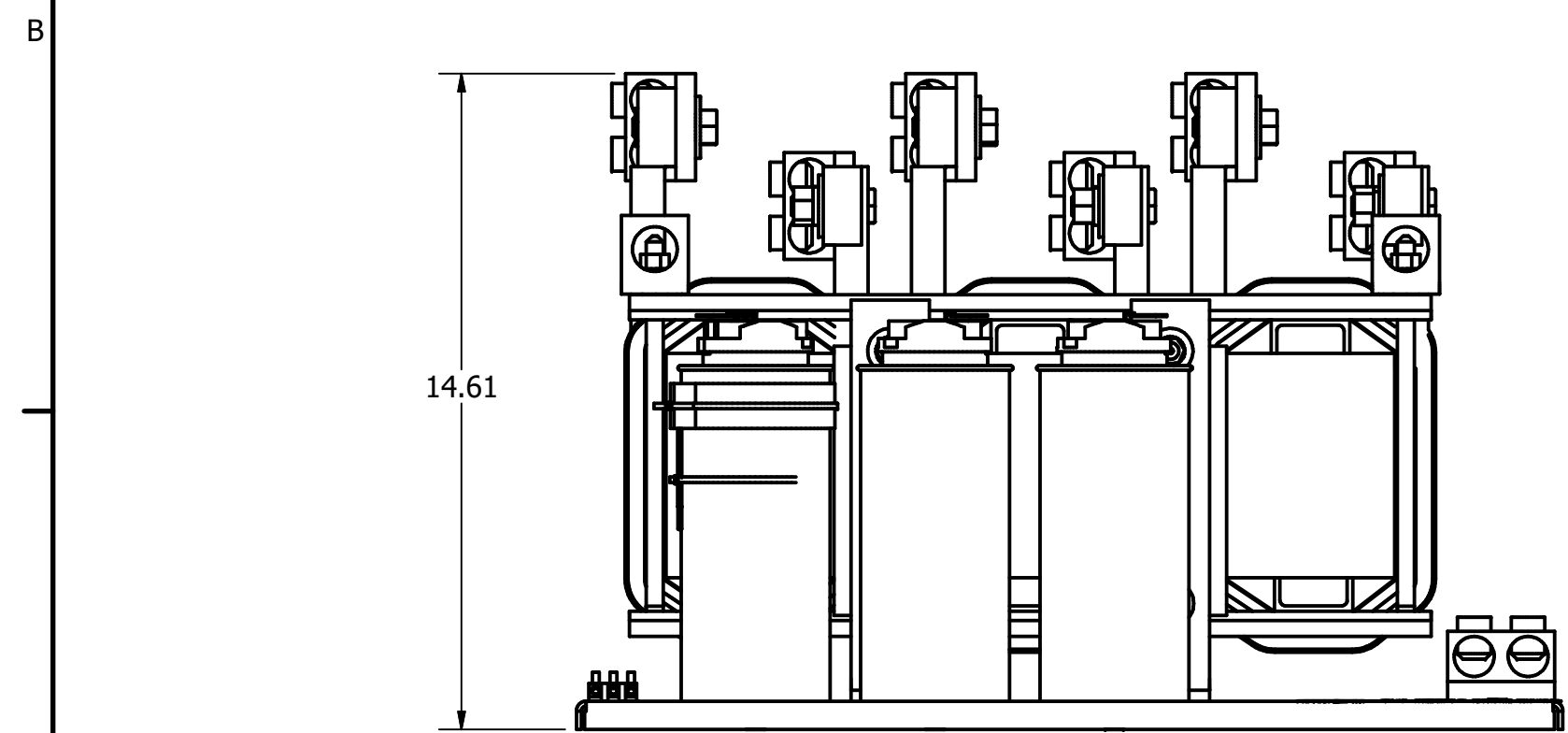


NOTE: FOR WIRE RANGE AND TORQUE INFORMATION SEE IOM MANUAL.

GROUND LUG



Ø0.44
4 Places



CUSTOMER IS RESPONSIBLE FOR PROPER COOLING OF FILTER COMPONENTS

CUSTOMER IS RESPONSIBLE FOR INSTALLATION TO MEET ALL NATIONAL AND LOCAL ELECTRICAL CODES.

DIMENSIONS IN INCHES (EXCEPT AS NOTED) TOLERANCES (EXCEPT AS NOTED) DECIMAL .XX ± .03 .XXX ± .010 FRACTIONAL ± 1/32 ANGULAR ± 1°	THE INFORMATION AND DESIGNS CONTAINED IN THIS DRAWING ARE CONFIDENTIAL AND THE PROPRIETARY PROPERTY OF ALLIENT INC. AND ITS SUBSIDIARIES. NEITHER THIS DESIGN NOR ANY INFORMATION CONTAINED IN THIS DRAWING MAY BE REPRODUCED OR DISCLOSED TO OTHERS WITHOUT THE EXPRESS WRITTEN CONSENT OF ALLIENT INC. AND ITS SUBSIDIARIES.	DRN. BY	JRN		W132N10611 Grant Drive Germantown, WI 53022 © 2026 Allient Inc.
		DATE	04/15/26		
MotorShield Sinewave Filter 104-192 Amp, 240/3/60, Open		SCALE:	1/3	DRN. NO.	109927DG
NO	ECO	REVISION	DATE	BY	SIZE
					C
					SHT.1 OF 1