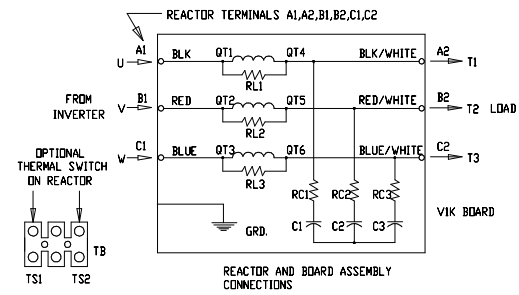


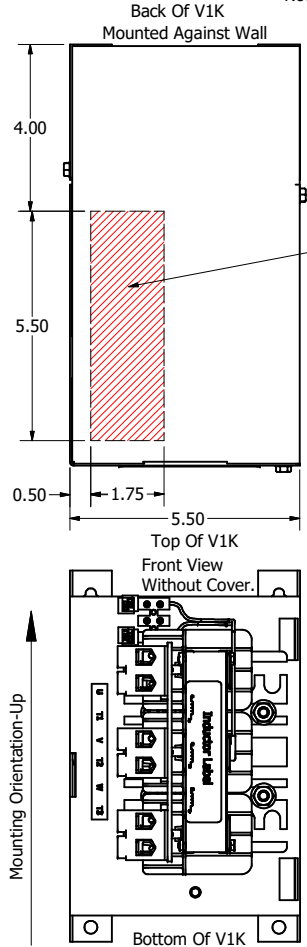
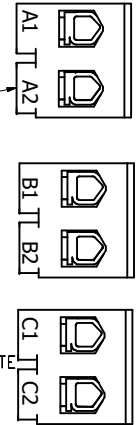
Note: Maintain Clearance of 3 Inches On All Sides To Other Equipment.  
See V1K Installation Guide For Terminal Wire Size And Torque Information.

V1K Part Number	Max Voltage	Amps	Phase	Weight (LBS)
V1K16A01*	600	16	3	15
V1K18A01*	600	18	3	15
V1K21A01*	600	21	3	15
V1K27A01*	600	27	3	15

T - Thermal Switch Option

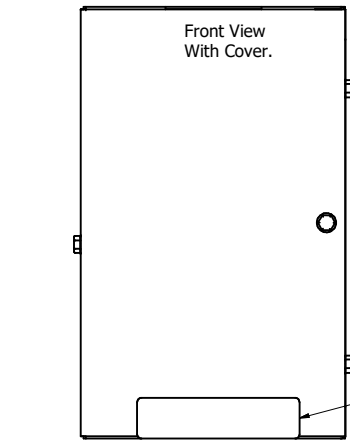
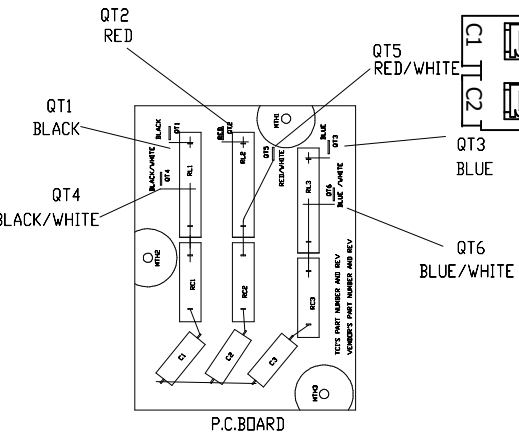


(Customer Connections) Markings On Terminal Block For Reference Only.



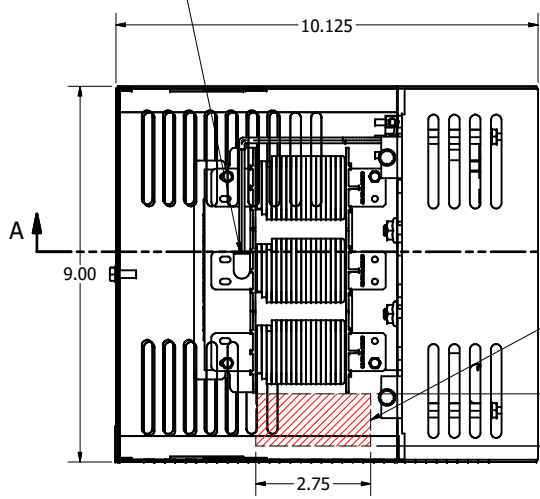
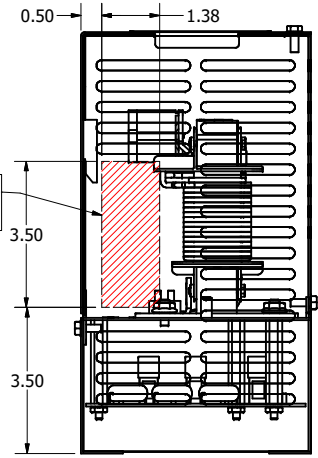
Recommended Customer Entry Location

See Documentation/Manufacturing Procedures & Guidelines For Thermal Switch Placement.

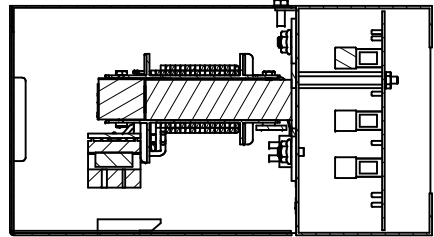


Recommended Customer Entry Location

Information Label.



Recommended Customer Entry Location

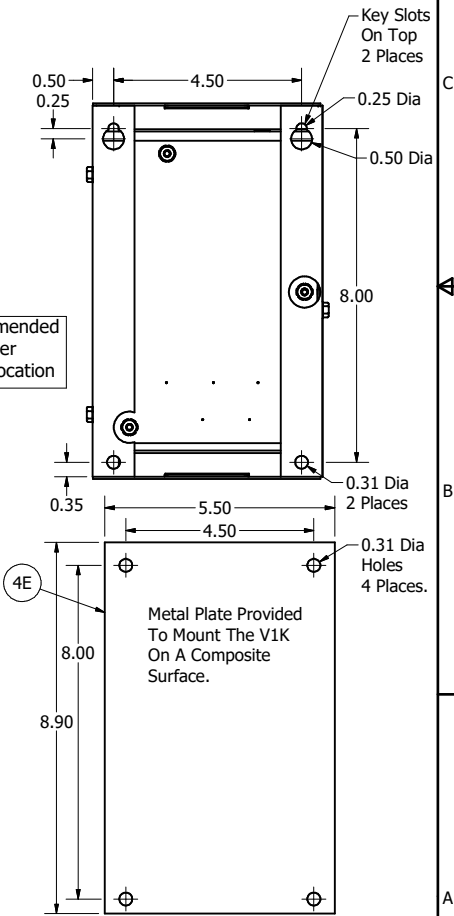


SECTION A-A

Customer Is Responsible For Installation to Meet All National And Local Electrical Codes.

Material(s) Shall be RoHS Compliant

DIMENSIONS IN INCHES (EXCEPT AS NOTED) TOLERANCES (EXCEPT AS NOTED) DECIMAL .XX ± .25 .XXX ± .10 FRACTIONAL ± 1/32 ANGULAR ± 1°		THE INFORMATION AND DESIGN CONTAINED IN THIS DRAWING ARE CONFIDENTIAL AND THE PROPRIETARY PROPERTY OF ALLIENT INC. AND ITS SUBSIDIARIES. NEITHER THIS DESIGN NOR ANY INFORMATION CONTAINED IN THIS DRAWING MAY BE REPRODUCED OR DISCLOSED TO OTHERS WITHOUT THE EXPRESS WRITTEN CONSENT OF ALLIENT INC. AND ITS SUBSIDIARIES.		DESIGNED BY DSW	DATE 02/10/26	SCALE 1:2.3	DRAWING NO. 109895DG	SIZE C	REV. NO. 1	DATE 02/10/26	BY DSW	ECO	REVISION	NO. 7267	INDUCTOR updated to KDRBA	DATE 02/10/26	BY DSW	SCALE 1:2.3	DRAWING NO. 109895DG	SIZE C	SHEET 1 OF 1
---	--	---	--	-----------------	---------------	-------------	----------------------	--------	------------	---------------	--------	-----	----------	----------	---------------------------	---------------	--------	-------------	----------------------	--------	--------------



Metal Plate Provided To Mount The V1K On A Composite Surface.

W132N10611 Grant Drive Germantown, WI 53022 © 2026 Allient Inc.

V1K, Enclosed Type 1 16A, 18A, 21A, 27A