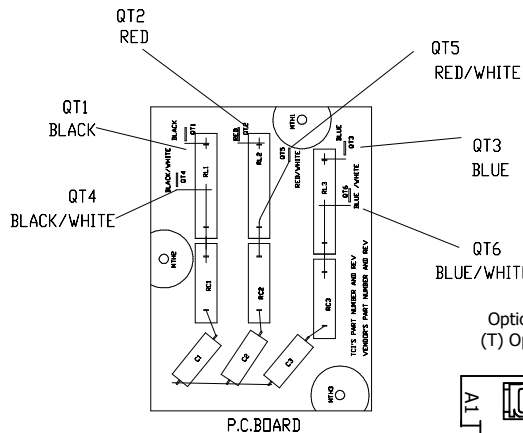


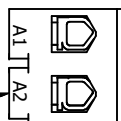
See V1K Installation Guide For Terminal Wire Size And Torque Information.

Note: Maintain Clearance of 3 Inches On All Sides To Other Equipment.

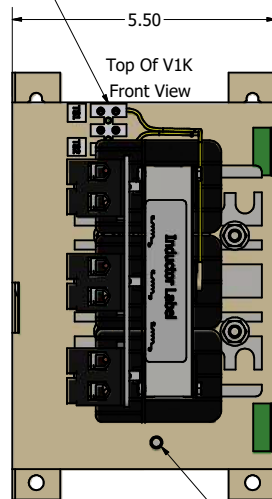
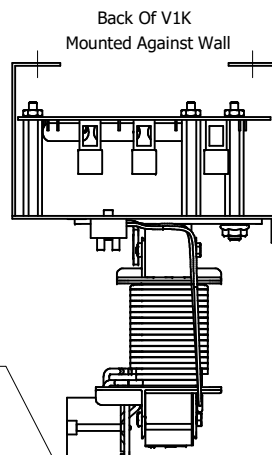


(Customer Connections) Markings On Terminal Block For Reference Only.

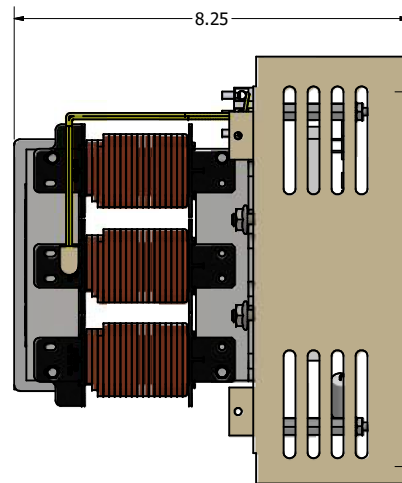
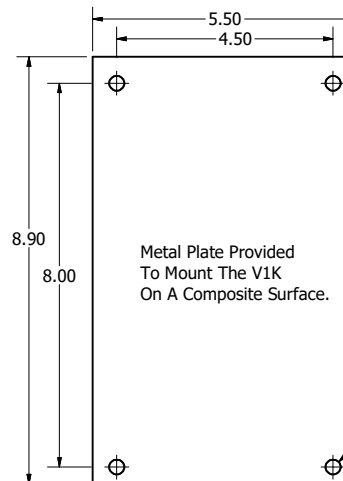
Optional: Thermal Switch (T) Option in Part Number



Mounting Orientation-Up

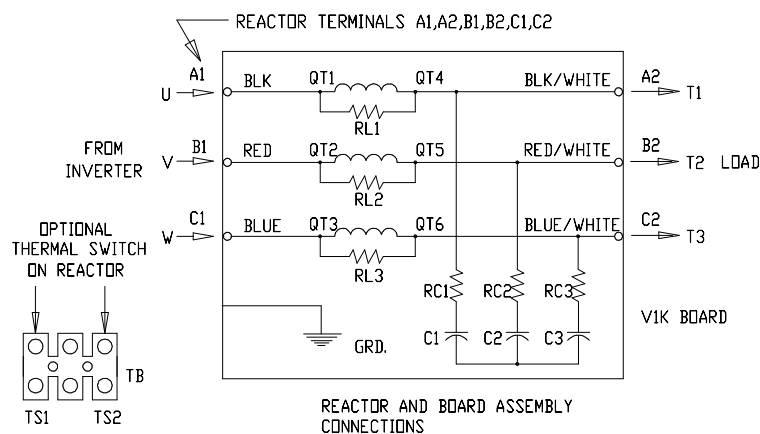
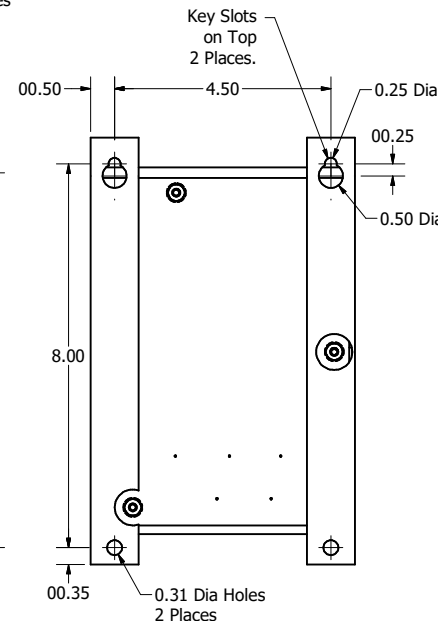


Bottom Of V1K (0.25-20 Ground Stud)



| V1K Open Units | | | | |
|-----------------|-------------|------|-------|--------------|
| V1K Part Number | Max Voltage | Amps | Phase | Weight (LBS) |
| V1K27A00EX | 600 | 27 | 3 | 12 |
| V1K27A00EXT | 600 | 27 | 3 | 12 |

T - Thermal Switch Option



Customer Is Responsible For Installation to Meet All National And Local Electrical Codes.

Material(s) Shall be RoHS Compliant

| | | | | | | | | | | | | | | | |
|--|------|------------------------------|---------|--|-----|-----------------|------|--------------|-----|------------|---|---------------------|----|--------------|----|
| DIMENSIONS IN INCHES (EXCEPT AS NOTED) | | TOLERANCES (EXCEPT AS NOTED) | | THE INFORMATION AND DESIGNS CONTAINED IN THIS DRAWING ARE CONFIDENTIAL AND THE PROPRIETARY PROPERTY OF ALLIANT INC. AND ITS SUBSIDIARIES. NEITHER THIS DESIGN NOR ANY INFORMATION CONTAINED IN THIS DRAWING MAY BE REPRODUCED OR DISCLOSED TO OTHERS WITHOUT THE EXPRESS WRITTEN CONSENT OF ALLIANT INC. AND ITS SUBSIDIARIES. | | DESIGNED BY DSW | | DATE 2/13/26 | | SCALE 1/2 | | DWN. NO. 109879-1DG | | SHEET 1 OF 1 | |
| B | 7396 | Inductor updated to KDRBA | 2/13/26 | DSW | ECO | REVISION | DATE | BY | 1/2 | 109879-1DG | 1 | 12 | 12 | 12 | 12 |

Alliant Power

W132N10611 Grant Drive
Germantown, WI 53022
© 2026 Alliant Inc.

V1K Open, Heavy Duty
27 Amps