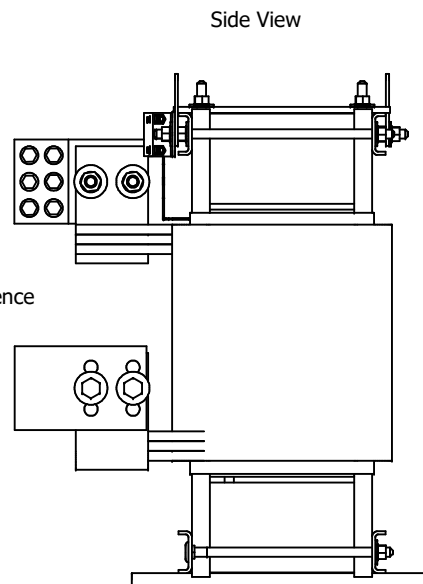
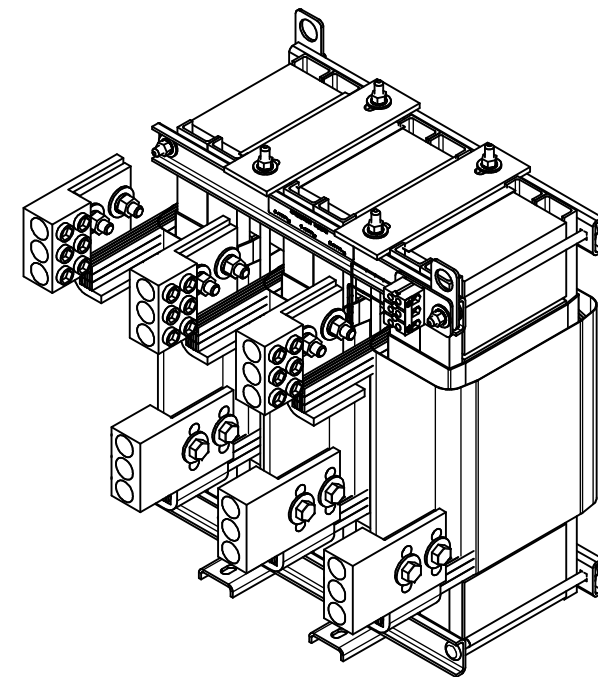


Markings For Reference Only.



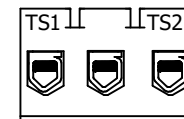
TCI Part Number	Rated Amps (A)	Rated Voltage (V)	Hz	---uH ±5%	Approx Weight (LBS)	Lug Kit Installed
-----------------	----------------	-------------------	----	-----------	---------------------	-------------------

KTRMG850AX1	850	480	60	57	550	SLK16
-------------	-----	-----	----	----	-----	-------



Conductor Range	Hex Size	Tightening Torque
600kcmil-2AWG	1/2	500 in-lb (56.5 N-m)

#### Thermal Switch Terminal Block



Wire Range: 18 AWG To 4 AWG.  
Torque: 20 LB-IN (2.3 Nm)  
Switch Opens on Temperature Rise  
Contact Rating: 6A @ 120 VAC

Customer Is Responsible For Installation to Meet All National And Local Electrical Codes.  
Material(s) Shall be RoHS Compliant

DIMENSIONS IN INCHES (EXCEPT AS NOTED) TOLERANCES (EXCEPT AS NOTED) DECIMAL .XX ± .25 .XXX ± .10 FRACTIONAL ± 1/32 ANGULAR ± 1°		THE INFORMATION AND DESIGNS CONTAINED IN THIS DRAWING ARE CONFIDENTIAL AND THE PROPRIETARY PROPERTY OF ALLIENT INC. AND ITS SUBSIDIARIES. NEITHER THIS DESIGN NOR ANY INFORMATION CONTAINED IN THIS DRAWING MAY BE REPRODUCED OR DISCLOSED TO OTHERS WITHOUT THE EXPRESS WRITTEN CONSENT OF ALLIENT INC. AND ITS SUBSIDIARIES.		DESIGNED BY DSW DATE 11/3/25		DRAWN BY DSW DATE 11/3/25		SCALE 1/4		SHEET 1 OF 1	
NO ECO		REVISION		DATE		BY		109871DG		SHT. 1 OF 1	



W132N10611 Grant Drive  
Germantown, WI 53022  
© 2025 Allient Inc.

KTRMG850AX1  
Sinewave Inductor, With Lugs Installed.