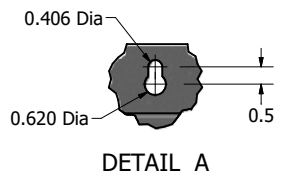
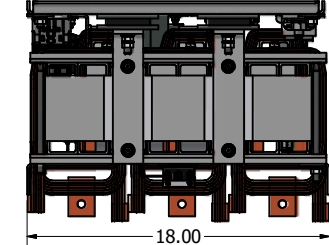


Unit Specifications:										
TCI Part Number	Horsepower (HP)	Nameplate Current (A)	Harmonic	Voltage	Hz.	Phase	Approx Weight (LBS)	Schematic Part Number	Terminal Hole Size	Lug Kit
HSE0125AW00000	125	150	5TH	480	60	3	390	32550-1	0.375 Dia	
HSE0125AW00100	125	150	5TH	480	60	3	390	32550-1	0.375 Dia	LK11
HSE0125AW01010	125	150	5TH	480	60	3	400	32550-1	0.375 Dia	
HSE0125AW01110	125	150	5TH	480	60	3	400	32550-1	0.375 Dia	LK11
HSE0150AW00000	150	188	5TH	480	60	3	490	32550-1	0.375 Dia	
HSE0150AW00100	150	188	5TH	480	60	3	490	32550-1	0.375 Dia	LK11
HSE0150AW01010	150	188	5TH	480	60	3	500	32550-1	0.375 Dia	
HSE0150AW01110	150	188	5TH	480	60	3	500	32550-1	0.375 Dia	LK11

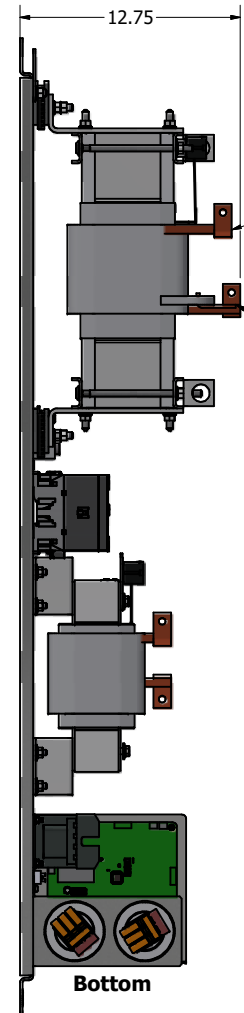
**Back Of Panel Mounted Against Wall**



**Terminal Lug, Optional:**

Customer Input Connections.  
 L1,T1, L2,T2, L3,T3  
 Wire Range: 250kcmil-6 AWG:  
 250kcmil-2AWG Torque : 375 IN-LBS (42.4 Nm)  
 2-6 AWG. Torque : 275 IN-LBS (31.1 Nm)

Ground Lug  
 Wire Range: (2) 350kcmil-6AWG  
 350kcmil-2AWG Torque : 375 IN-LBS (42.4 Nm)  
 2-6 AWG. Torque : 275 IN-LBS (31.1 Nm)

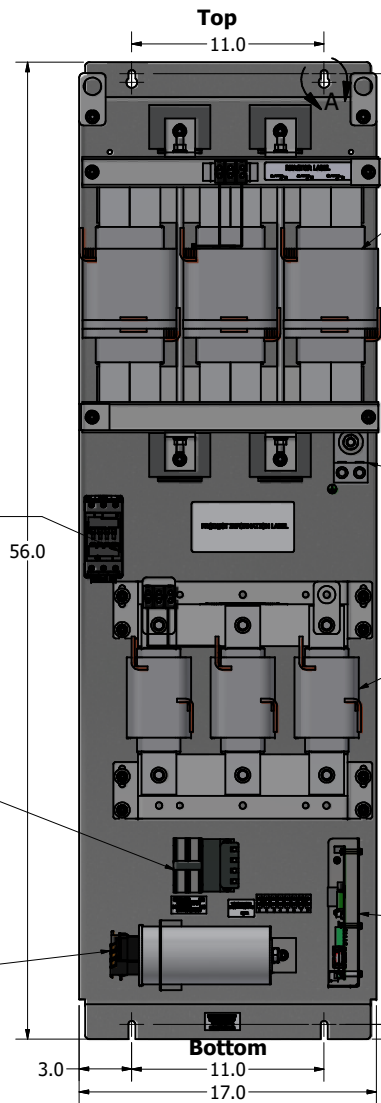


Customer Power Connection (Lug Kit, Optional)  
 See Note: 7

(Optional) Contactor (CNT)  
 See Note 2

Transformer (XFMR) (Optional)  
 See Note: 2

Capacitor(s) (Cap)(s)  
 See Note: 5



Line Reactor (LR)

**Mounting Orientation-Up**

Ground Lug

Trap Reactor (TR)

PQconnect (Optional)  
 See Note:2

- Notes:
- 1.) Refer to manual for wire size and torque.
  - 2.) PQconnect option, comes with Contactor and Transformer.
  - 3.) Refer to schematic #32550-1.
  - 4.) Installation must meet all national and local codes.
  - 5.) Number, size & location can vary per Hp and voltage.
  - 6.) Customer Is Responsible For Proper Cooling Of Filter Components, Maximum Ambient 50°C.
  - 7.) Lug Kit, Available.

Material(s) Shall be RoHS Compliant

THE INFORMATION AND DESIGNS CONTAINED IN THIS DRAWING ARE CONFIDENTIAL AND THE PROPRIETARY PROPERTY OF ALLIED MOTION TECHNOLOGIES INC. AND ITS SUBSIDIARIES. NEITHER THIS DESIGN NOR ANY INFORMATION CONTAINED IN THIS DRAWING MAY BE REPRODUCED OR DISCLOSED TO OTHERS WITHOUT THE EXPRESS WRITTEN CONSENT OF ALLIED MOTION TECHNOLOGIES INC. AND ITS SUBSIDIARIES.				TOLERANCES (EXCEPT AS NOTED) DECIMAL .XX ± .25 .XXX ± .10 FRACTIONAL ± 1/16 ANGULAR ± 1°				W132N10611 (Rev 13Fv6) Germantown, WI 53022 © 2024 TCI, LLC 125HP, 150HP Open, HSE Filter 109578DG			
NO	REVISION	DATE	BY	DATE	BY	SCALE	DRN BY	DATE	REVISED	FILE	SHT 1 OF 1
		2/29/2024	DSW			1/4.5	DSW	2/29/2024			