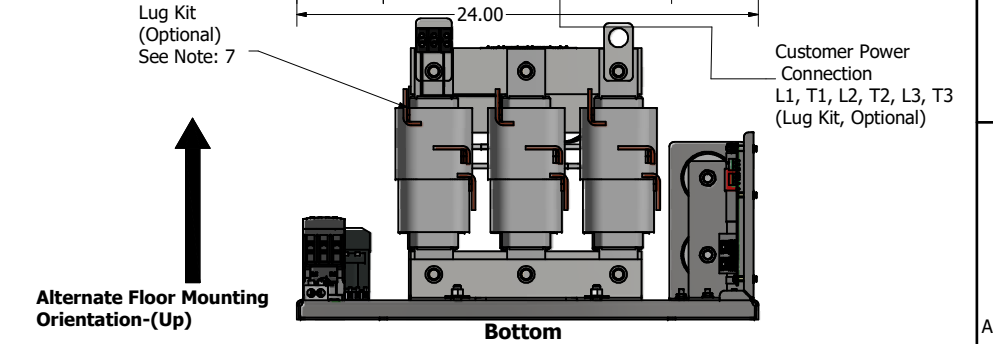
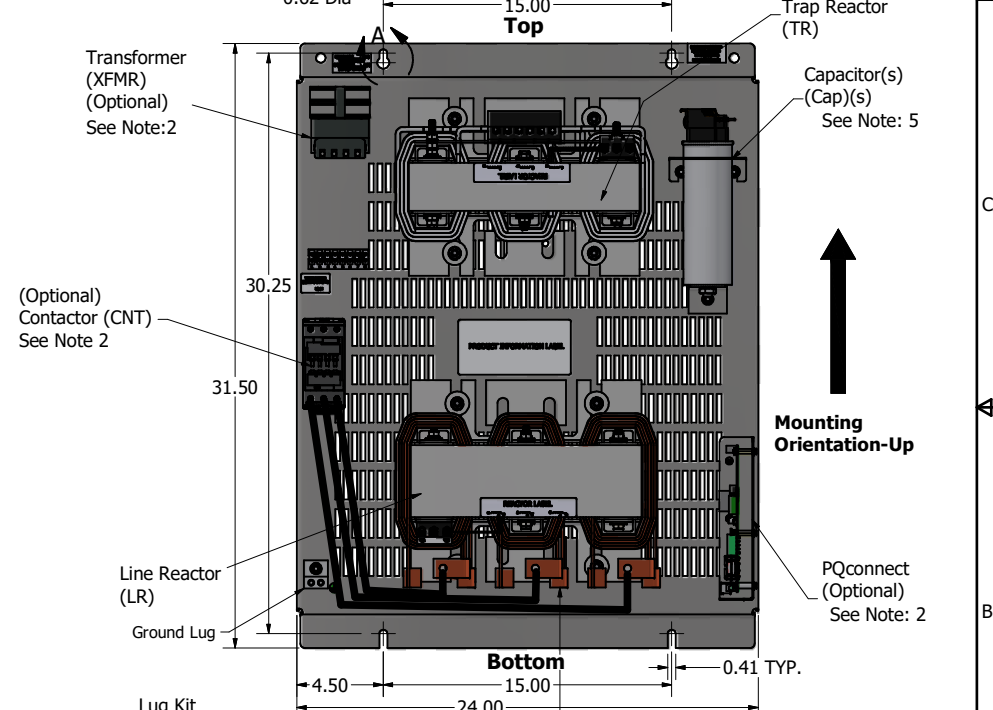
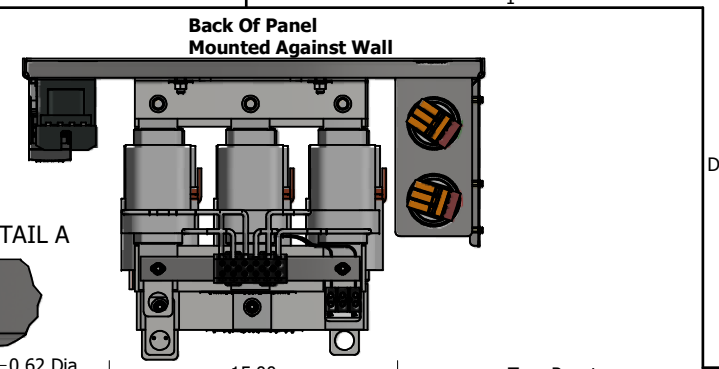
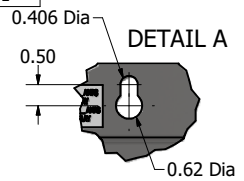
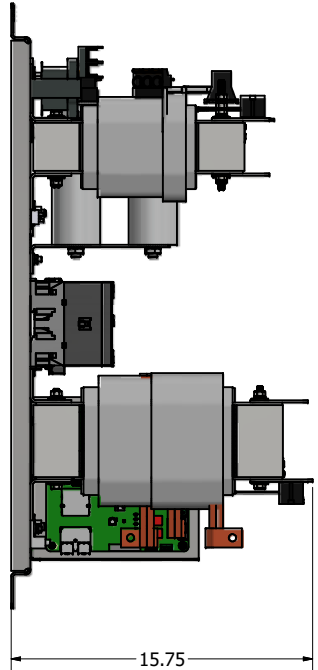
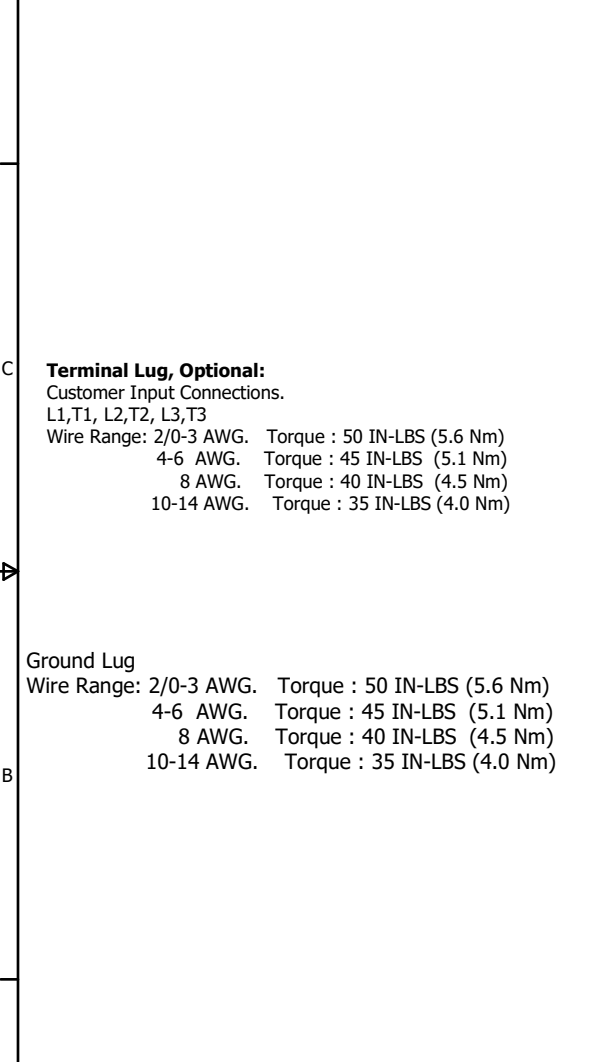


Unit Specifications:										
TCI Part Number	Horsepower (HP)	Nameplate Current (A)	Harmonic	Voltage	Hz.	Phase	Approx Weight (LBS)	Terminal Hole Size	Lug Kit	Schematic Part Number
HSE0100AW00000	100	125	5TH	480	60	3	329	0.375	-	32550-1
HSE0100AW01000	100	125	5TH	480	60	3	329		LK26	32550-1
HSE0100AW01010	100	125	5TH	480	60	3	335	0.375		32550-1
HSE0100AW01110	100	125	5TH	480	60	3	335		LK26	32550-1



- Notes:
- 1.) Refer to manual for wire size and torque.
 - 2.) PQconnect option, comes with Contactor and Transformer.
 - 3.) Refer to schematic #32550-1.
 - 4.) Installation must meet all national and local codes.
 - 5.) Number, size & location can vary per Hp and voltage.
 - 6.) Customer Is Responsible For Proper Cooling Of Filter Components, Maximum Ambient 50°C.
 - 7.) Lug Kit, Available.

Material(s) Shall be RoHS Compliant

THE INFORMATION AND DESIGNS CONTAINED IN THIS DRAWING ARE CONFIDENTIAL AND THE PROPRIETARY PROPERTY OF ALLIED MOTION TECHNOLOGIES INC. AND ITS SUBSIDIARIES. NEITHER THIS DESIGN NOR ANY INFORMATION CONTAINED IN THIS DRAWING MAY BE REPRODUCED OR DISCLOSED TO OTHERS WITHOUT THE EXPRESS WRITTEN CONSENT OF ALLIED MOTION TECHNOLOGIES INC. AND ITS SUBSIDIARIES.				TOLERANCES (EXCEPT AS NOTED) DECIMAL .XX ± .25 .XXX ± .10		 An Allied Motion Company W132N10611 (Rev 13) 5/6 Germanstown, WI 53022 © 2024 TCI, LLC
C	6608, Update p to p	3/20/2024	DSW	FRACTIONAL ± 1/16	100HP Open, HSE Filter	
B	6302, HSL---E to HSE	6/9/2023	DSW	ANGULAR ± 1°	109382DG	
A	As Designed	3/16/2023	DSW			
NO	REVISION	DATE	BY			

SCALE: 1/4.5
DATE: 3/16/2023
REV: 02
SHT 1 OF 1