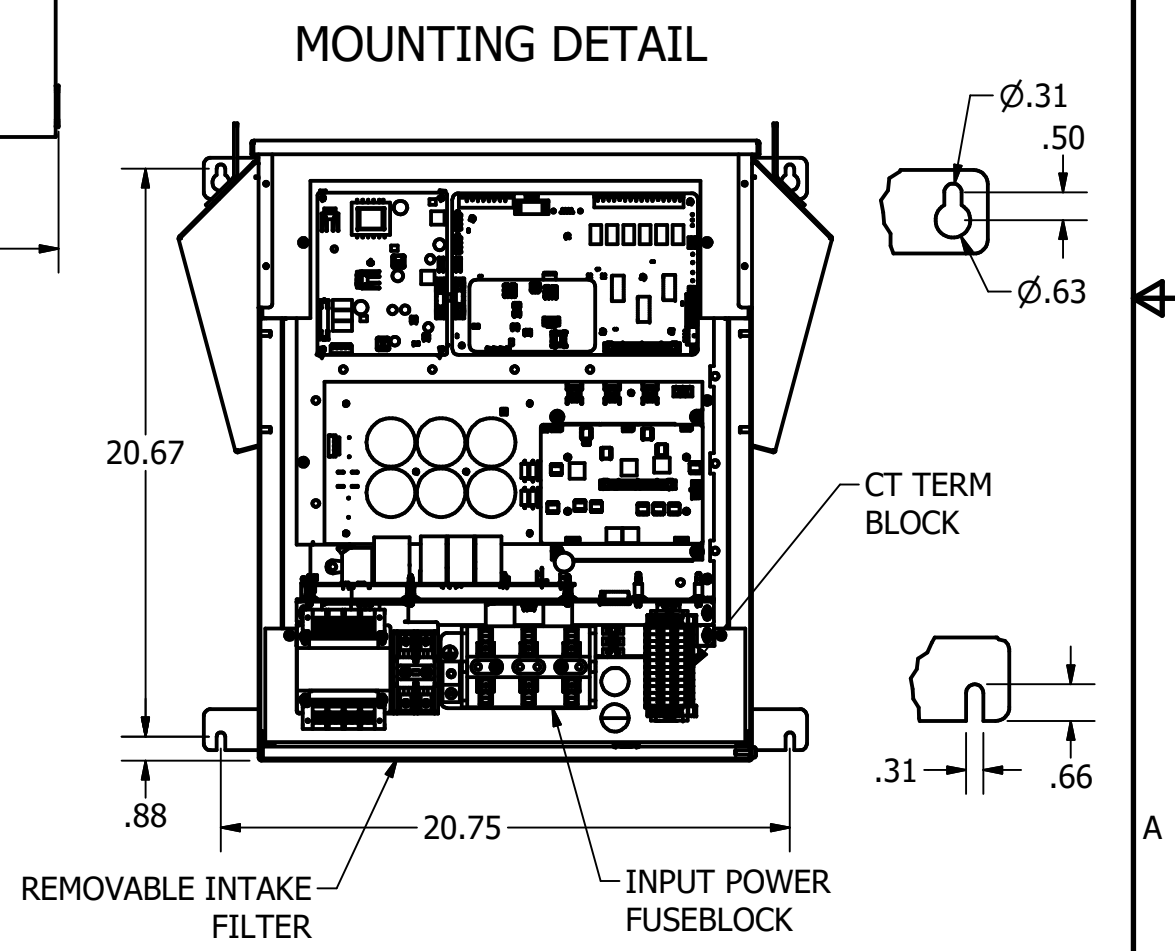
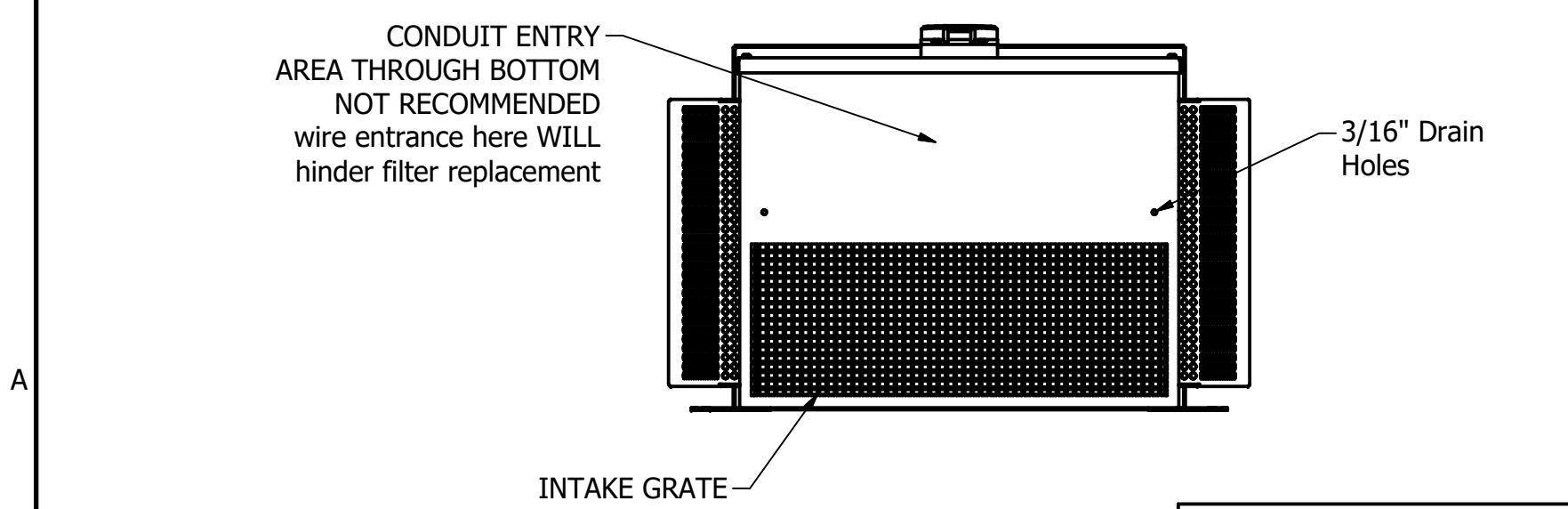


Notes:
 Weight lbs (kg) 141 (64)
 *Maintain 6" side clearance, both sides,
 and 4" bottom clearance for cooling

Dimensions are in Inches
 Finish: ANSI-61 Gray
 Heat loss Watts (Btu/hr):
 30A: 880 Watts (3002 Btu/hr)
 50A: 1465 Watts (4999 Btu/hr)

DRAWINGS:
 General Schematic: 32622
 Customer Connection: 32845
 Interface/Display module #28282-1
 Current Transformer #26461



The 50A unit is rated for 39A when applied with a 480V/600V autotransformer
 The 30A unit is rated for 23A when applied with a 480V/600V autotransformer

THE INFORMATION AND DESIGNS CONTAINED IN THIS DRAWING ARE CONFIDENTIAL AND THE PROPRIETARY PROPERTY OF ALLIED MOTION TECHNOLOGIES INC. AND ITS SUBSIDIARIES. NEITHER THIS DESIGN NOR ANY INFORMATION CONTAINED IN THIS DRAWING MAY BE REPRODUCED OR DISCLOSED TO OTHERS WITHOUT THE EXPRESS WRITTEN CONSENT OF ALLIED MOTION TECHNOLOGIES INC. AND ITS SUBSIDIARIES.

| | | | | |
|----|-------------|---------|-----|------------------------------|
| | | | | TOLERANCES (EXCEPT AS NOTED) |
| | | | | DECIMAL |
| | | | | .XX ± .03 |
| | | | | .XXX ± .010 |
| | | | | FRACTIONAL |
| | | | | ± 1/32 |
| | | | | ANGULAR |
| | | | | ± 1° |
| A | as designed | 1/17/23 | MJS | |
| NO | REVISION | DATE | BY | |

TCL
 An Allied Motion Company

W132N10611 Grant Drive
 Germantown, WI 53022
 © 2024 TCI, LLC

Outline / Installation,
 ALC30/50A, Type 3R

DRN. BY: MJS DATE: 1/17/23 109325
 SCALE: yes APRVD: SIZE B SHT.1 OF 1