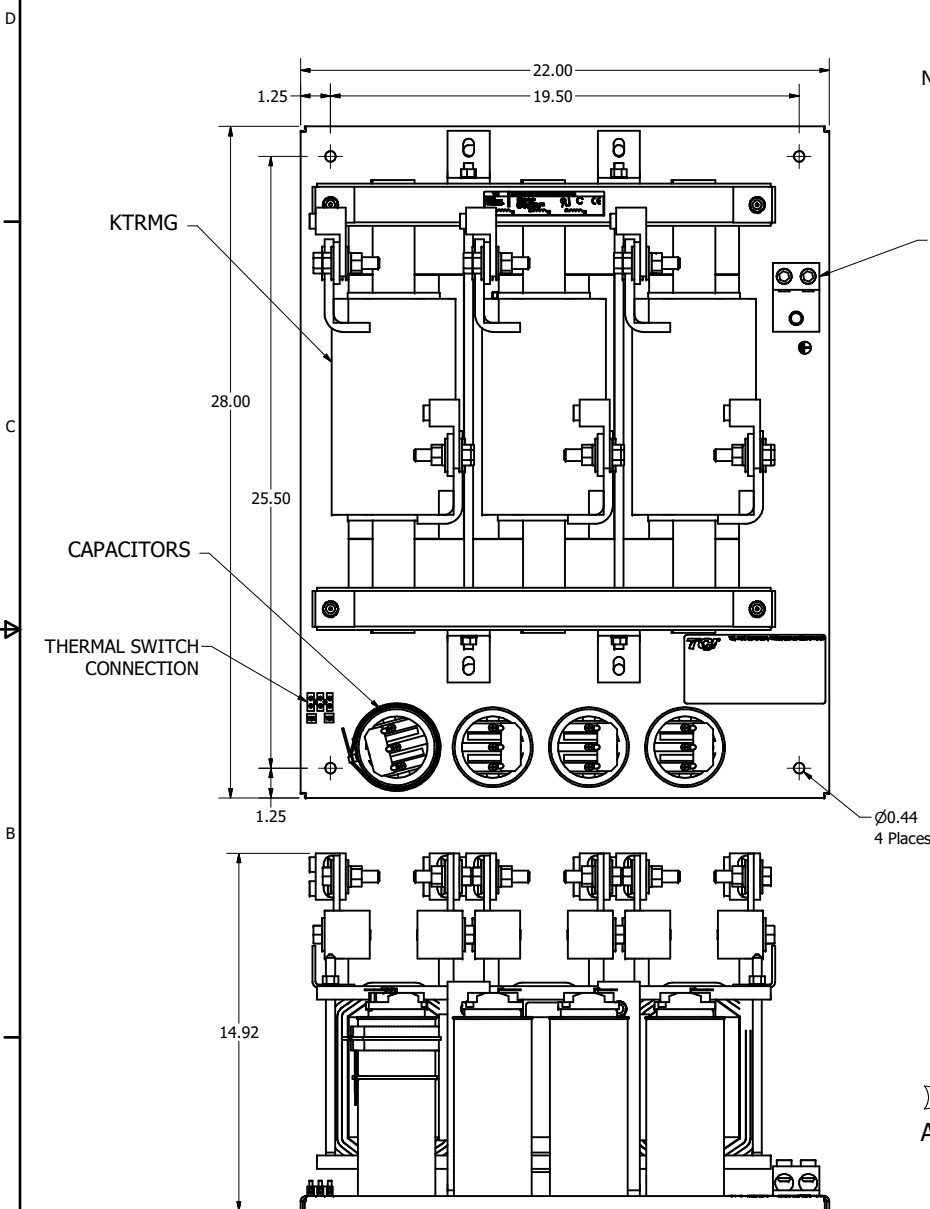
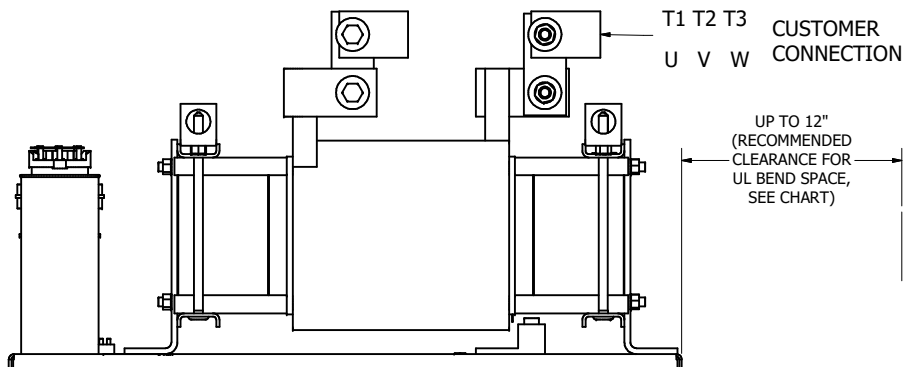
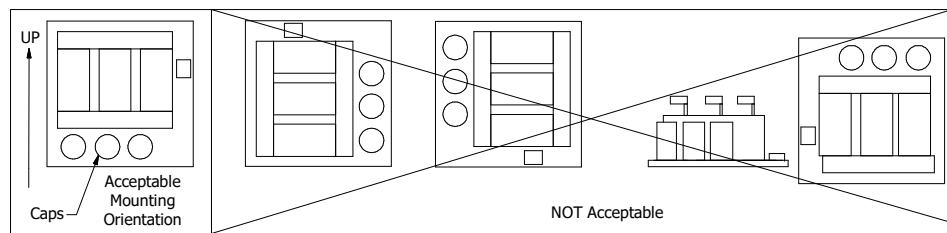
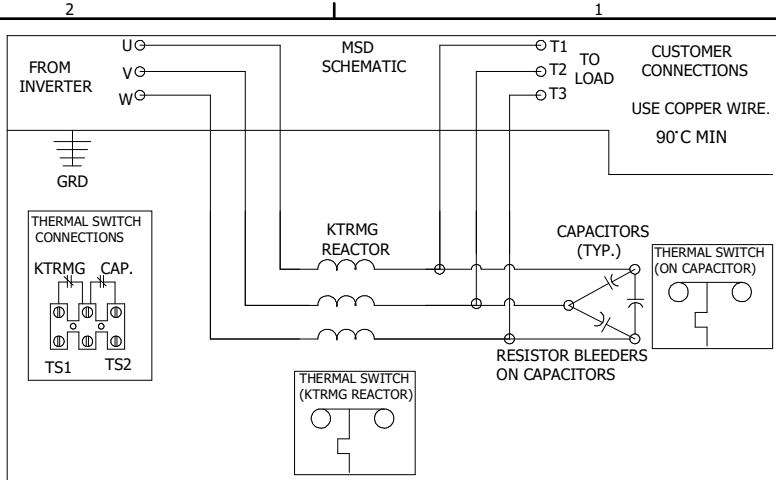


MSD PART NUMBER	HP	VOLT	CURRENT	WEIGHT	PRESSURE TERMINAL WIRE RANGE
MSD0362C000	350	600V	362 AMPS	500 LBS	(2) 350MCM-6AWG
MSD0420C000	400	600V	420 AMPS	525 LBS	(2) 350MCM-6AWG



NOTE: FOR WIRE RANGE AND TORQUE INFORMATION SEE IOM MANUAL.



CUSTOMER IS RESPONSIBLE FOR PROPER COOLING OF FILTER COMPONENTS

CUSTOMER IS RESPONSIBLE FOR INSTALLATION TO MEET ALL NATIONAL AND LOCAL ELECTRICAL CODES.

DIMENSIONS IN INCHES (EXCEPT AS NOTED) TOLERANCES (EXCEPT AS NOTED) DECIMAL .XX ± .03 .XXX ± .010 FRACTIONAL ± 1/32 ANGULAR ± 1°	THE INFORMATION AND DESIGN CONTAINED IN THIS DRAWING ARE CONFIDENTIAL AND THE PROPRIETARY PROPERTY OF ALLIENT INC. AND ITS SUBSIDIARIES. NEITHER THIS DESIGN NOR ANY INFORMATION CONTAINED IN THIS DRAWING MAY BE REPRODUCED OR DISCLOSED TO OTHERS WITHOUT THE EXPRESS WRITTEN CONSENT OF ALLIENT INC. AND ITS SUBSIDIARIES.		DESIGNED BY: JRN		W132N10611 Grant Drive Germantown, WI 53022 © 2026 Allient Inc.
	DATE: 12/28/22	REVISION: B 6884 Update Table Title	DATE: 12/12/24		BY: JRN
NO ECO	REVISION	DATE	BY	SCALE: 1/3	DESIGN NO: 109310DG
4	3	2	1	SHT. 1 OF 1	