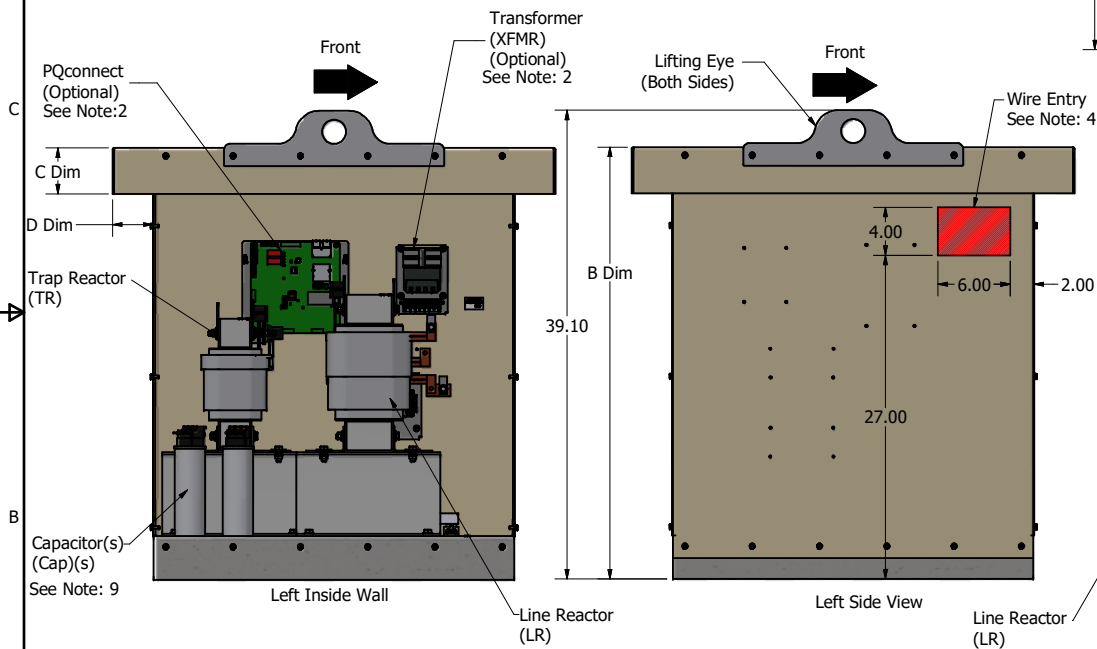


Unit Specifications:										
TCI Part Number	Horsepower (HP)	Nameplate Current (A)	Harmonic	Voltage	Hz.	Phase	Approx Weight (LBS)	Schematic Part Number	Terminal Hole Size	Lug Kit
HSE0060AW#0000	60	75	5TH	480	60	3	434	32550-1	0.375 Dia	
HSE0060AW#0100	60	75	5TH	480	60	3	434	32550-1		LK26
HSE0060AW#1010	60	75	5TH	480	60	3	445	32550-1	0.375 Dia	
HSE0060AW#1110	60	75	5TH	480	60	3	445	32550-1		LK26
HSE0075AW#0000	75	100	5TH	480	60	3	439	32550-1	0.375 Dia	
HSE0075AW#0100	75	100	5TH	480	60	3	439	32550-1		LK26
HSE0075AW#1010	75	100	5TH	480	60	3	450	32550-1	0.375 Dia	
HSE0075AW#1110	75	100	5TH	480	60	3	450	32550-1		LK26
HSE0100AW#0000	100	125	5TH	480	60	3	498	32550-1	0.28 Dia	
HSE0100AW#0100	100	125	5TH	480	60	3	498	32550-1		LK27
HSE0100AW#1010	100	125	5TH	480	60	3	510	32550-1	0.28 Dia	
HSE0100AW#1110	100	125	5TH	480	60	3	510	32550-1		LK27

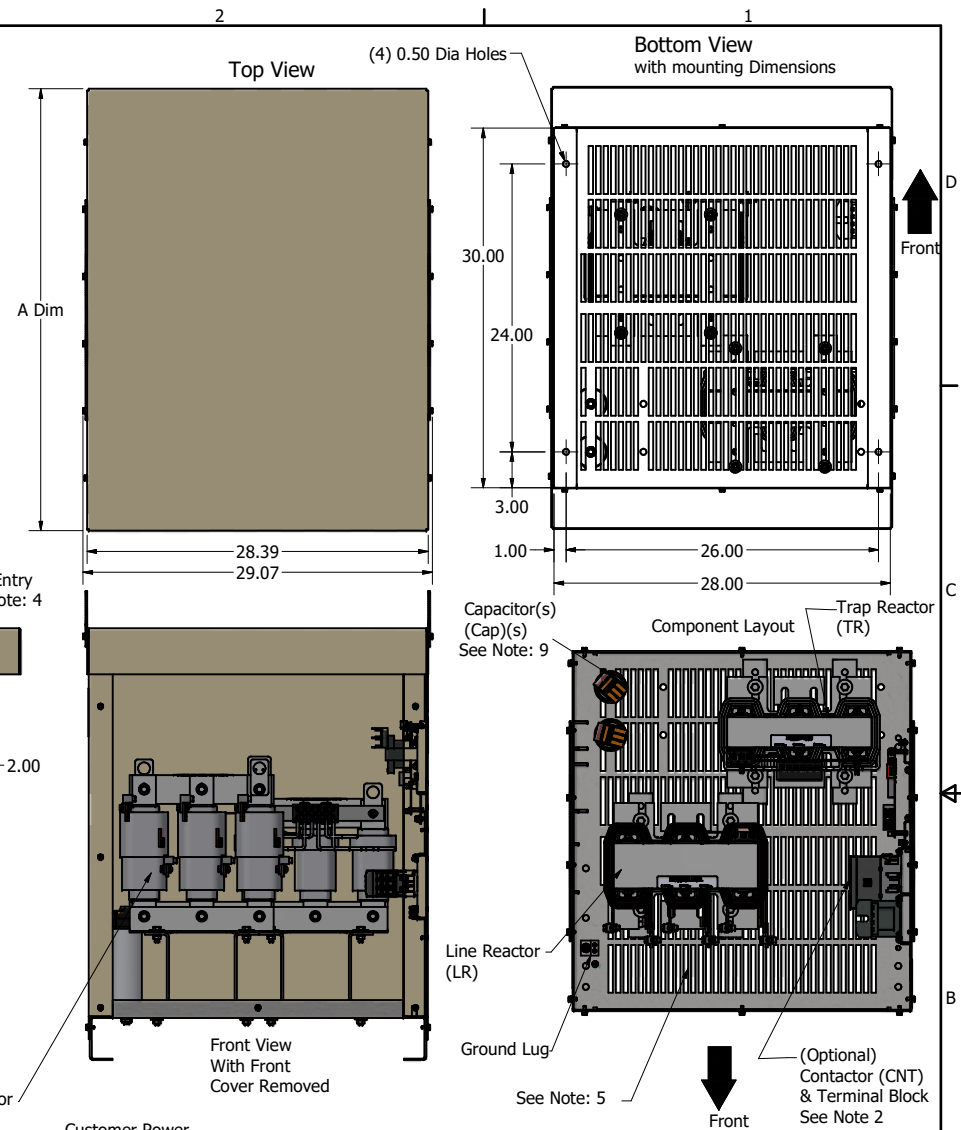
# Enclosure Option
1- UL Type 1
3- UL Type 3R

Example Drawing Of Part Number Shown: HSE0100AW3111E



Dimension Table				
Enclosure	"A" Dim	"B" Dim	"C" Dim	"D" Dim
Type 1	33.2	37.0	2.3	1.5
Type 3R	36.9	36.0	3.8	3.4

- Notes:
- 1.) Refer to manual for wire size and torque.
  - 2.) PQconnect option, comes with Contactor and Transformer.
  - 3.) Refer to schematic #32550-1.
  - 4.) Preferred wire entry area.
  - 5.) Wire entry is allowed through the bottom.
  - 6.) Enclosure is shown with a Type 3R top.
  - 7.) Use only hubs or fittings that comply with UL514B for Type 3R applications
  - 8.) Installation must meet all national and local codes.
  - 9.) Number, size & location can vary per Hp and voltage.



Customer Power Connection  
L1, L2, L3  
T1, T2, T3

#### Terminal Lug, Optional:

Customer Input Connections.

L1,T1, L2,T2, L3,T3

Wire Range: 2/0-3 AWG.

4-6 AWG.

8 AWG.

10-14 AWG.

Torque : 50 IN-LBS (5.6 Nm)

Torque : 45 IN-LBS (5.1 Nm)

Torque : 40 IN-LBS (4.5 Nm)

Torque : 35 IN-LBS (4.0 Nm)

#### Ground Lug

Wire Range: 2/0-3 AWG.

4-6 AWG.

8 AWG.

10-14 AWG.

Torque : 50 IN-LBS (5.6 Nm)

Torque : 45 IN-LBS (5.1 Nm)

Torque : 40 IN-LBS (4.5 Nm)

Torque : 35 IN-LBS (4.0 Nm)

Material(s) Shall be RoHS Compliant

THE INFORMATION AND DESIGNS CONTAINED IN THIS DRAWING ARE CONFIDENTIAL AND THE PROPRIETARY PROPERTY OF ALLIED MOTION TECHNOLOGIES INC. AND ITS SUBSIDIARIES. NEITHER THIS DESIGN NOR ANY INFORMATION CONTAINED IN THIS DRAWING MAY BE REPRODUCED OR DISCLOSED TO OTHERS WITHOUT THE EXPRESS WRITTEN CONSENT OF ALLIED MOTION TECHNOLOGIES INC. AND ITS SUBSIDIARIES.				TOLERANCES (EXCEPT AS NOTED)				TCI			
D	7005, Term hole chg100HP (Rest at Rev C)	5/22/25	DSW	DECIMAL	.XX ± .25	.XXX ± .10		An Official Motion Technology Company			
C	6608, XFMR P to P update	4/11/2024	DSW	FRACTIONAL	± 1/16			60HP, 75HP, 100HP			
B	6302, HSL-E to HSE	6/14/2023	DSW	ANGULAR	± 1°			HSE, Type 1 and Type 3R			
A	As Built	12/5/2022	DSW					109303DG			
NO	REVISION	DATE	BY					SCALE: 1/5.5			