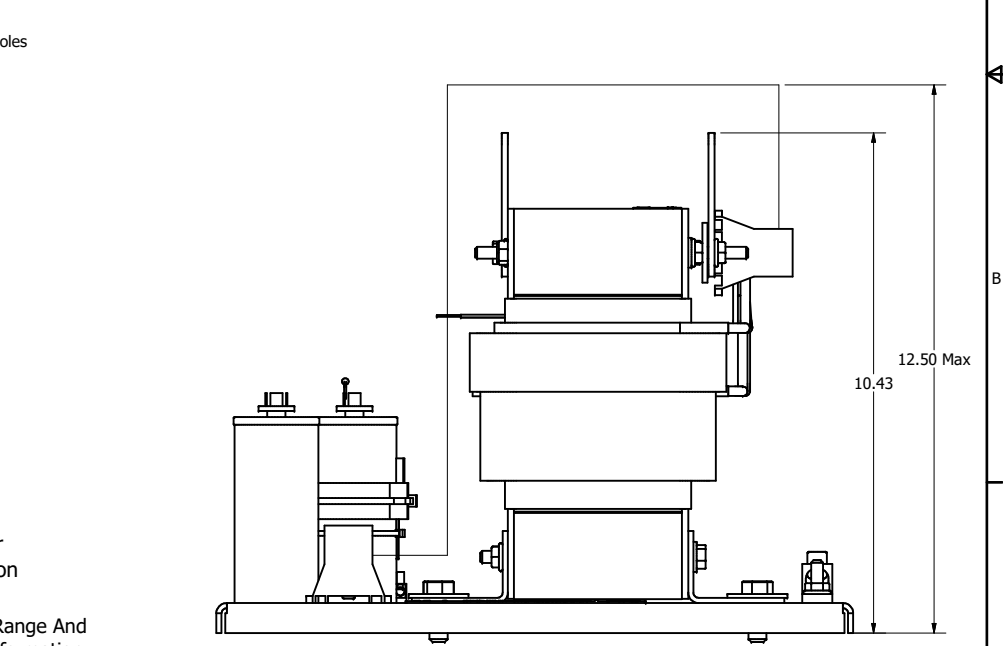
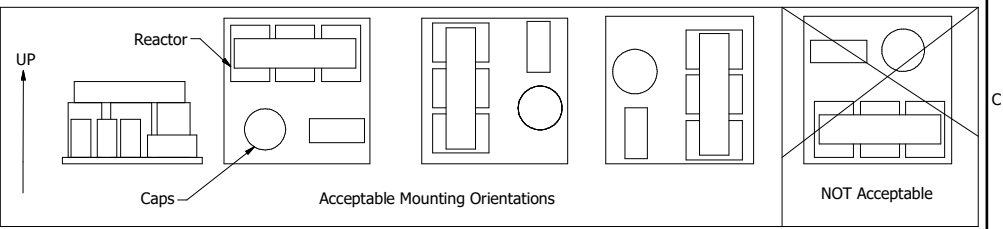
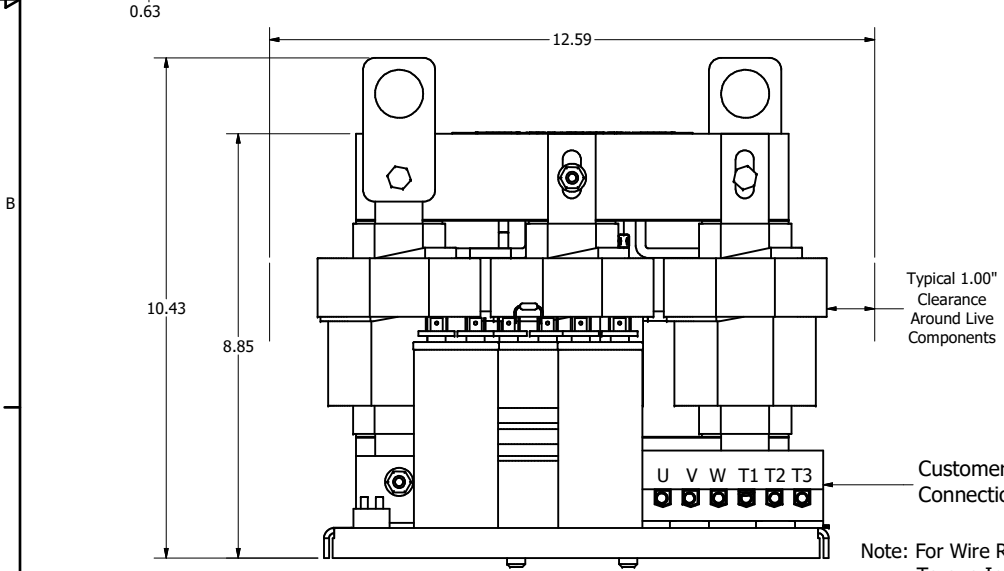
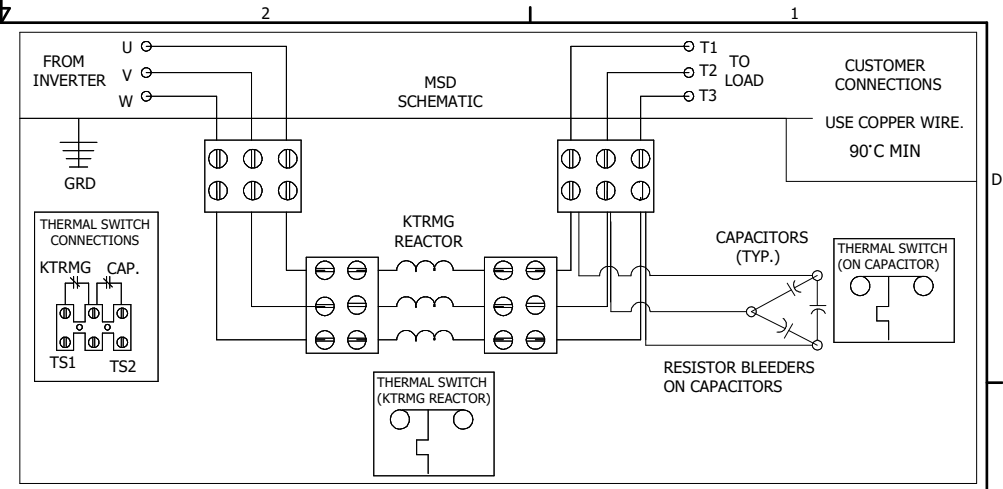
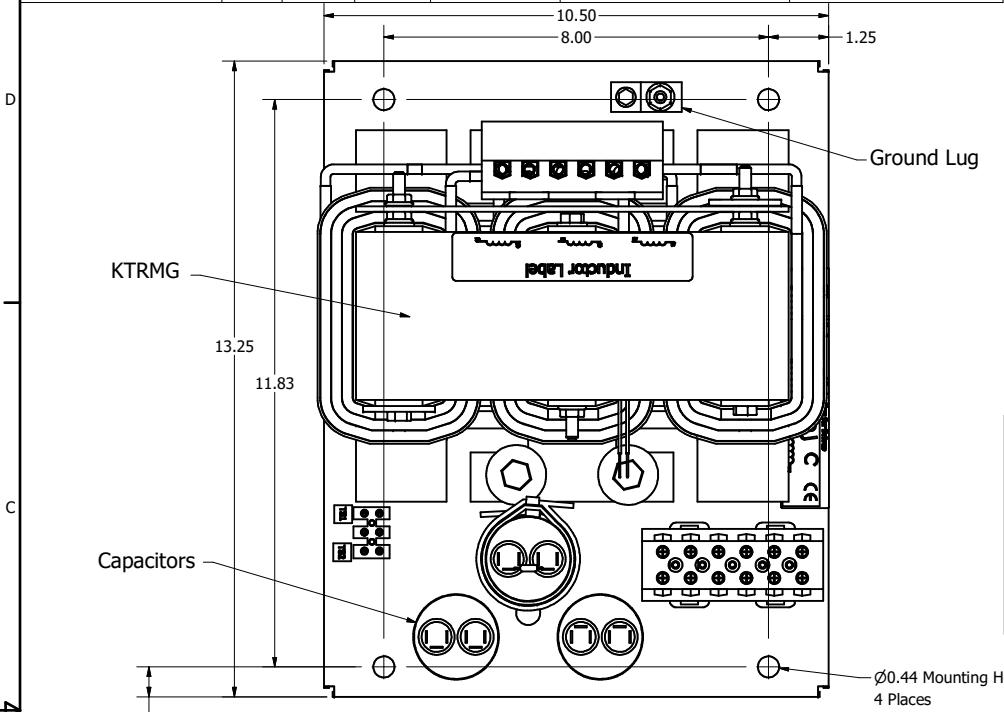


MSD PART NUMBER	HP	VOLT	CURRENT	WEIGHT	TERMINAL BLOCK	GROUND LUG
MSD0045C000	40	600V	45 AMPS	100LBS	WIRE RANGE: 1-22AWG	WIRE RANGE: 2/0 - 4AW



Note: For Wire Range And Torque Information See Iom Manual.

**WARNING/ATTENTION**  
 RISK OF ELECTROCUTION  
 RISQUE D'ELECTROCUTION  
 WAIT TWO MINUTES AFTER POWER IS TURNED OFF BEFORE CLOSING TO ALLOW FOR CAPACITOR DISCHARGE  
 ATTENDRE DEUX MINUTES APRES LA MISE HORS TENSION AVANT DE PERMETTRE LA RECHARGE DU CONDENSATEUR

Capacitor Discharge Label To Ship With Panel

Customer Is Responsible For Proper Cooling Of Filter Components  
 Capacitors Maximum Ambient 50°C

Customer Is Responsible For Installation To Meet All National And Local Electrical Codes.

DIMENSIONS IN INCHES (EXCEPT AS NOTED) TOLERANCES (EXCEPT AS NOTED) DECIMAL .XX ± .03 .XXX ± .010 FRACTIONAL ± 1/32 ANGULAR ± 1°

NO	ECO	REVISION	DATE	BY	SCALE	DEN. NO.	SIZE
C	7265	Adjusted Wire clearance	10/17/25	TJS			
B		10929SDG (Open, 35A)	12/04/24	JRN			
A		As Designed	11/14/22	JRN			

DESIGNED BY: JRN  
 DATE: 11/14/22  
  
 W132N10611 Grant Drive  
 Germantown, WI 53022  
 © 2025 Alliant Inc.  
**MotorShield Sinewave Filter**  
 45 AMP, 600/3/60, Open  
 SCALE: 1/2  
 DEN. NO.: 109296DG  
 SHEET 1 OF 1