

Unit Specifications:								
TCI Part Number	Horsepower (HP)	Nameplate Current (A)	Harmonic	Voltage	Hz.	Phase	Approx Weight: (LBS)	Schematic Part Number
HSE0005AW00000	5	8	5TH	480	60	3	57	32550-2
HSE0005AW01010	5	8	5TH	480	60	3	65	32550-2
HSE0008AW00000	7.5	10	5TH	480	60	3	57	32550-2
HSE0008AW01010	7.5	10	5TH	480	60	3	65	32550-2
HSE0010AW00000	10	15	5TH	480	60	3	90	32550-2
HSE0010AW01010	10	15	5TH	480	60	3	98	32550-2
HSE0015AW00000	15	20	5TH	480	60	3	92	32550-2
HSE0015AW01010	15	20	5TH	480	60	3	100	32550-2
HSE0020AW00000	20	25	5TH	480	60	3	107	32550-2
HSE0020AW01010	20	25	5TH	480	60	3	115	32550-2
HSE0025AW00000	25	32	5TH	480	60	3	123	32550-2
HSE0025AW01010	25	32	5TH	480	60	3	131	32550-2
HSE0030AW00000	30	39	5TH	480	60	3	155	32550-2
HSE0030AW01010	30	39	5TH	480	60	3	163	32550-2
HSE0040AW00000	40	50	5TH	480	60	3	182	32550-2
HSE0040AW01010	40	50	5TH	480	60	3	190	32550-2
HSE0050AW00000	50	60	5TH	480	60	3	200	32550-1
HSE0050AW01010	50	60	5TH	480	60	3	205	32550-1

### C Customer Input Connections, For Above parts (Terminal Block)

L1,T1, L2,T2, L3,T3

Wire Range:

1- 4 AWG. Torque : 35 IN-LBS (3.95 Nm)  
 6- 14 AWG. Torque : 30 IN-LBS (3.39 Nm)  
 16- 20 AW Torque : 25 IN-LBS (2.28 Nm)  
 22 AWG. Torque : 20 IN-LBS (2.26 Nm)

Ground Lug

Wire Range: 2/0-3 AWG. Torque : 50 IN-LBS (5.6 Nm)  
 4-6 AWG. Torque : 45 IN-LBS (5.1 Nm)  
 8 AWG. Torque : 40 IN-LBS (4.5 Nm)  
 10-14 AWG. Torque : 35 IN-LBS (4.0 Nm)

Unit Specifications:								
TCI Part Number	Horsepower (HP)	Nameplate Current (A)	Harmonic	Voltage	Hz.	Phase	Approx Weight: (LBS)	Schematic Part Number
HSE0060AW00000	60	75	5TH	480	60	3	282	32550-1
HSE0060AW00100	60	75	5TH	480	60	3	282	32550-1
HSE0060AW01010	60	75	5TH	480	60	3	283	32550-1
HSE0060AW01110	60	75	5TH	480	60	3	290	32550-1
HSE0075AW00000	75	100	5TH	480	60	3	294	32550-1
HSE0075AW00100	75	100	5TH	480	60	3	294	32550-1
HSE0075AW01010	75	100	5TH	480	60	3	295	32550-1
HSE0075AW01110	75	100	5TH	480	60	3	300	32550-1

### Terminal Lug, Optional:

Customer Input Connections.

L1,T1, L2,T2, L3,T3

Wire Range: 2/0-3 AWG. Torque : 50 IN-LBS (5.6 Nm)  
 4-6 AWG. Torque : 45 IN-LBS (5.1 Nm)  
 8 AWG. Torque : 40 IN-LBS (4.5 Nm)  
 10-14 AWG. Torque : 35 IN-LBS (4.0 Nm)

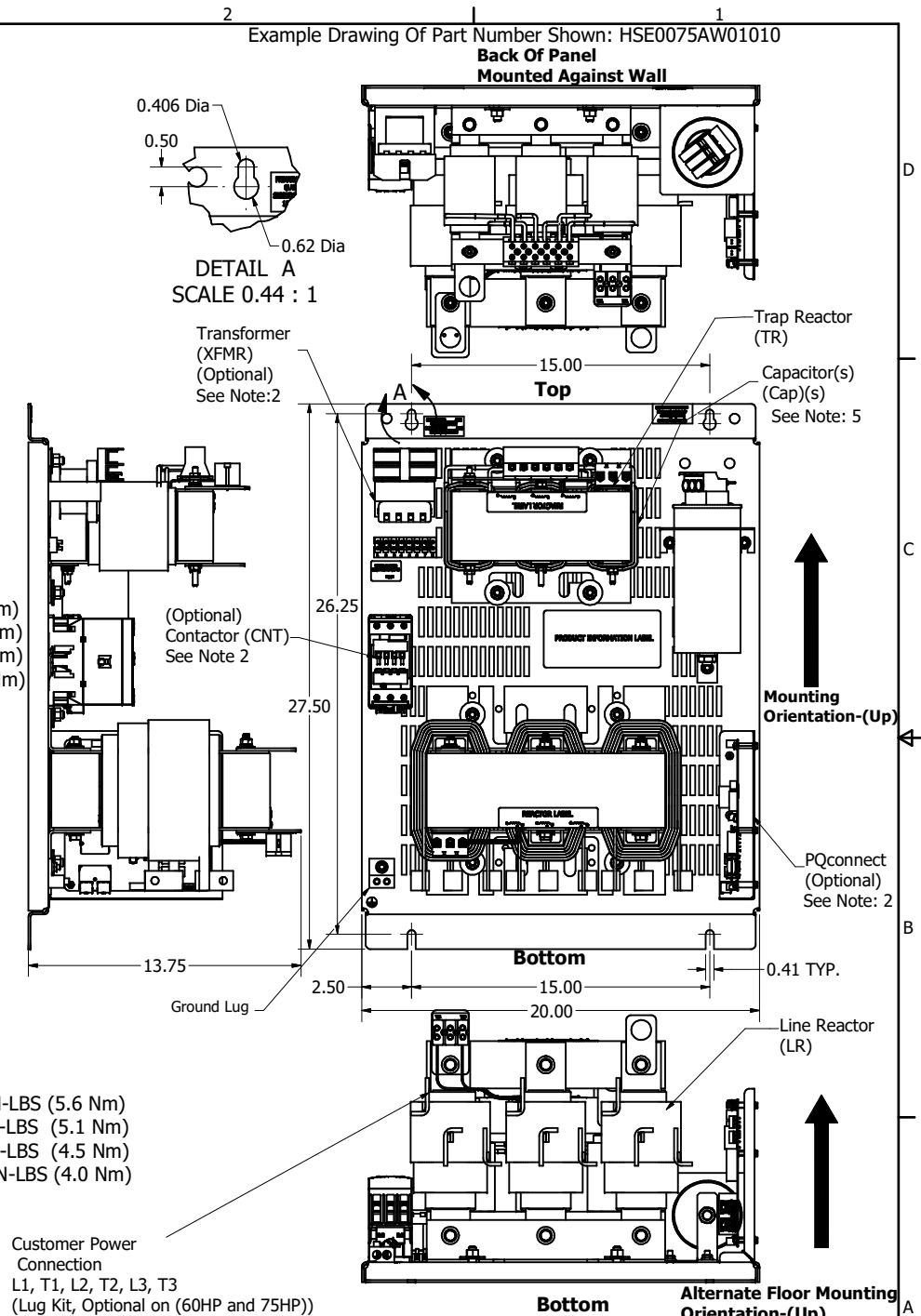
Ground Lug

Wire Range: 2/0-3 AWG. Torque : 50 IN-LBS (5.6 Nm)  
 4-6 AWG. Torque : 45 IN-LBS (5.1 Nm)  
 8 AWG. Torque : 40 IN-LBS (4.5 Nm)  
 10-14 AWG. Torque : 35 IN-LBS (4.0 Nm)

Notes:

- 1.) Refer to manual for wire size and torque.
- 2.) PQconnect option, comes with Contactor and Transformer.
- 3.) Refer to schematic #32550-1, 32550-2.
- 4.) Installation must meet all national and local codes.
- 5.) Number, size & location can vary per Hp and voltage.
- 6.) Customer Is Responsible For Proper Cooling Of Filter Components, Maximum Ambient 50°C.

Material(s) Shall be RoHS Compliant



THE INFORMATION AND DESIGNS CONTAINED IN THIS DRAWING ARE CONFIDENTIAL AND THE PROPRIETARY PROPERTY OF ALLIED MOTION TECHNOLOGIES INC. AND ITS SUBSIDIARIES. NEITHER THIS DESIGN NOR ANY INFORMATION CONTAINED IN THIS DRAWING MAY BE REPRODUCED OR DISCLOSED TO OTHERS WITHOUT THE EXPRESS WRITTEN CONSENT OF ALLIED MOTION TECHNOLOGIES INC. AND ITS SUBSIDIARIES.			
E	6608 Point to Point updated	3/20/2024	DSW
D	6302, HSL--E to HSE	6/9/2023	DSW
C	Added 60HP and 75HP	3/16/2023	DSW
B	6116, EPF Design Shift	12/5/2022	DSW
A	As Built	9/29/2022	DSW
NO	REVISION	DATE	BY

TOLERANCES (EXCEPT AS NOTED)			
D	.XX ± .25	DECIMAL	
C	.XXX ± .10	DECIMAL	
B	± 1/16	FRACTIONAL	
A	± 1°	ANGULAR	
NO			

<b>TCI</b>		W132N10611 (Rev 1)Feb Germanboro th, WI 53022	
An Allied Motion Company		© 2024 TCI, LLC	
5HP to 75HP		Open, HSE Filter	
OWN BY DSW	DATE 9/29/2022	109255DG	
SCALE: 1/4.5	DRAWN	REV	
SHT 1 OF 1			