

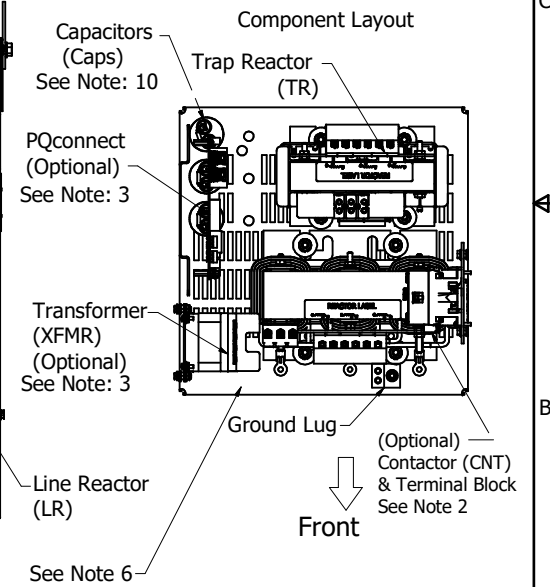
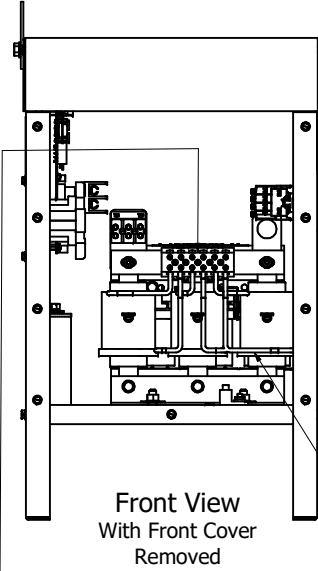
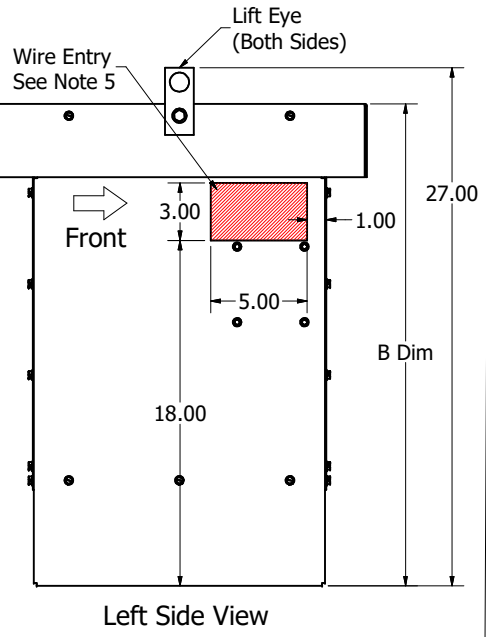
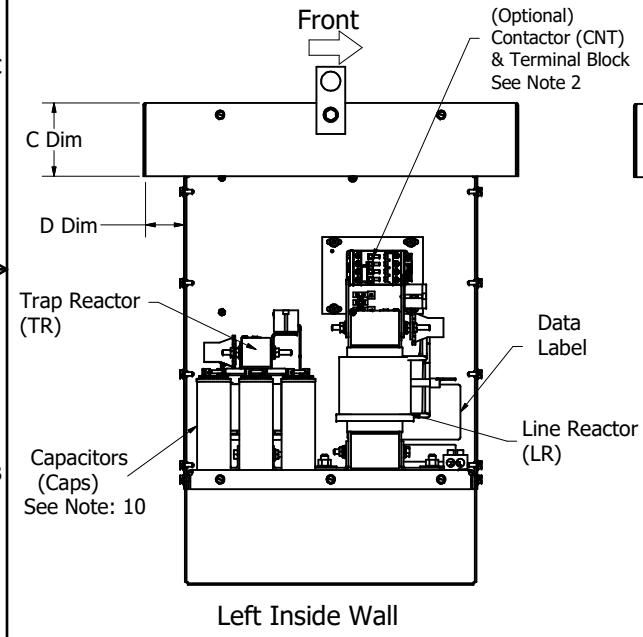
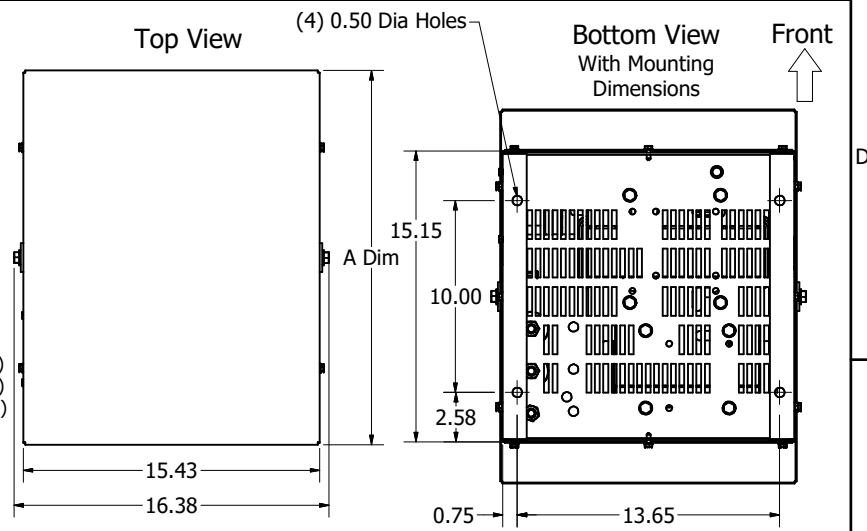
Unit Specifications:								
TCI Part Number	Horsepower (HP)	Rated Filter Current (A)	Harmonic	Voltage	Hz.	Phase	Approx Weight (LBS) Includes CNT, PQ, XFMR	Schematic Drawing#
HSL0005AW#^0*E	5	8	5TH	480	60	3	106	32550-2
HSL008AW#^0*E	7.5	10	5TH	480	60	3	107	32550-2
HSL0010AW#^0*E	10	15	5TH	480	60	3	135	32550-2
HSL0015AW#^0*E	15	20	5TH	480	60	3	138	32550-2

# Enclosure Option	^ Contactor Option	* Communication Option
1- UL Type 1	0-No Contactor	0-Standard
3- UL Type 3R	1- Contactor	1- PQconnect via Modbus RTU over RS485

5HP Terminal Block:
Customer Input Connections.
L1, T1, L2, T2, L3, T3
Wire Range: 18 AWG To 4 AWG.
Torque: 20 LB-IN (2.3 Nm)

8HP, 10HP, 15HP, 20HP Terminal Block:
Customer Input Connections.
L1, T1, L2, T2, L3, T3
Wire Range:
1- 4 AWG. Torque : 35 IN-LBS (3.95 Nm)
6- 14 AWG. Torque : 30 IN-LBS (3.39 Nm)
16- 20 AW. Torque : 25 IN-LBS (2.28 Nm)
22 AWG. Torque : 20 IN-LBS (2.26 Nm)


Ground Lug
Wire Range: 2/0-3 AWG. Torque : 50 IN-LBS (5.6 Nm)
4-6 AWG. Torque : 45 IN-LBS (5.1 Nm)
8 AWG. Torque : 40 IN-LBS (4.5 Nm)
10-14 AWG. Torque : 35 IN-LBS (4.0 Nm)



Dimension Table				
Enclosure	"A" Dim	"B" Dim	"C" Dim	"D" Dim
Type 1	16.8	25.6	1.8	0.8
Type 3R	19.5	25.1	3.8	2.1

- Notes:
- 1.) Refer to manual for wire size and torque.
 - 2.) Contactor (CNT) optional, Customer to supply power to Contactor.
 - 3.) PQconnect option, comes with Contactor and Transformer.
 - 4.) Refer to schematic #32550-2.
 - 5.) Preferred wire entry area.
 - 6.) Wire entry is allowed through the bottom.
 - 7.) Enclosure is shown with a Type 3R top.
 - 8.) Use only hubs or fittings that comply with UL514B for Type 3R applications
 - 9.) Installation must meet all national and local codes.
 - 10.) Number, size & location can vary per Hp and voltage.

Customer Power Connection
L1, T1, L2, T2, L3, T3

THE INFORMATION AND DESIGNS CONTAINED IN THIS DRAWING ARE CONFIDENTIAL AND THE PROPRIETARY PROPERTY OF ALLIED MOTION TECHNOLOGIES INC. AND ITS SUBSIDIARIES. NEITHER THIS DESIGN NOR ANY INFORMATION CONTAINED IN THIS DRAWING MAY BE REPRODUCED OR DISCLOSED TO OTHERS WITHOUT THE EXPRESS WRITTEN CONSENT OF ALLIED MOTION TECHNOLOGIES INC. AND ITS SUBSIDIARIES.				TOLERANCES (EXCEPT AS NOTED) DECIMAL .XX ± .25 .XXX ± .10		 <small>W132N10611 (Rev. 11/16) Germantown, WI 53022</small> <small>© 2022 TCI, LLC</small>	
B	6116, EPF Design Shift	12/5/2022	DSW	FRACTIONAL ± 1/16	SHP to 15HP		
A	As Designed	9/7/2022	DSW	ANGULAR ± 1°	EPF, Type 1 and Type 3R		
NO	REVISION	DATE	BY	SCALE: 1/5	DATE: 9/7/2022	REV: 109252DG	SHEET 1 OF 1

Material(s) Shall be RoHS Compliant