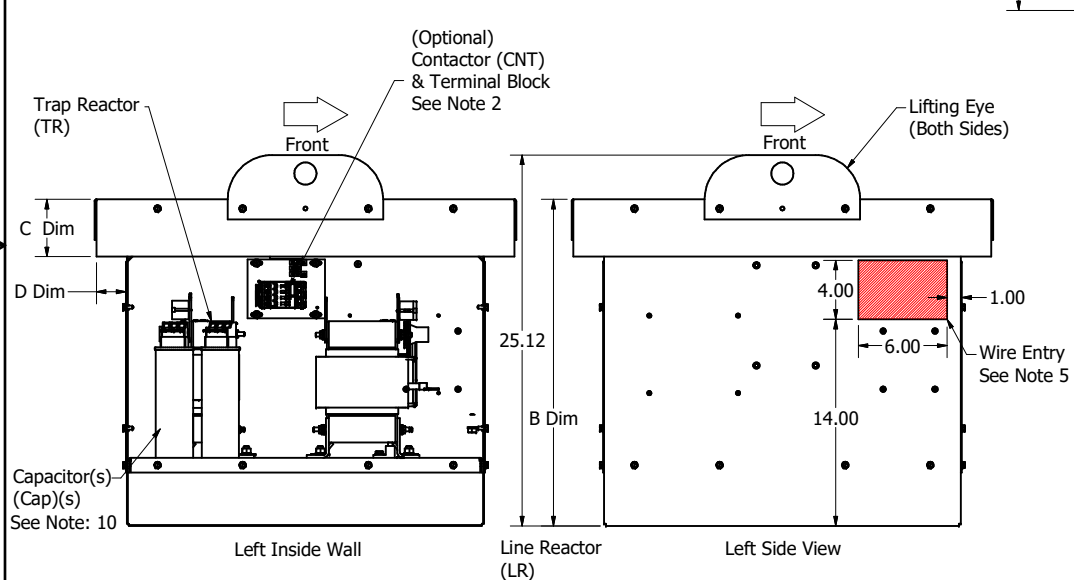


Unit Specifications:								
TCI Part Number	Horsepower (HP)	Nameplate Current (A)	Harmonic	Voltage	Hz.	Phase	Approx Weight (LBS) Includes, CNT, PQ, XFMR	Schematic Part Number
HSL0020AW#^0*E	20	25	5TH	480	60	3	145	32550-2
HSL0025AW#^0*E	25	32	5TH	480	60	3	160	32550-1
HSL0030AW#^0*E	30	39	5TH	480	60	3	190	32550-2
HSL0040AW#^0*E	40	50	5TH	480	60	3	225	32250-2
HSL0050AW#^0*E	50	60	5TH	480	60	3	230	32550-1

# Enclosure Option	^ Contactor Option	* Communication Option
1- UL Type 1	0-No Contactor	0-Standard
3- UL Type 3R	1- Contactor	1- PQconnect via Modbus RTU over RS485

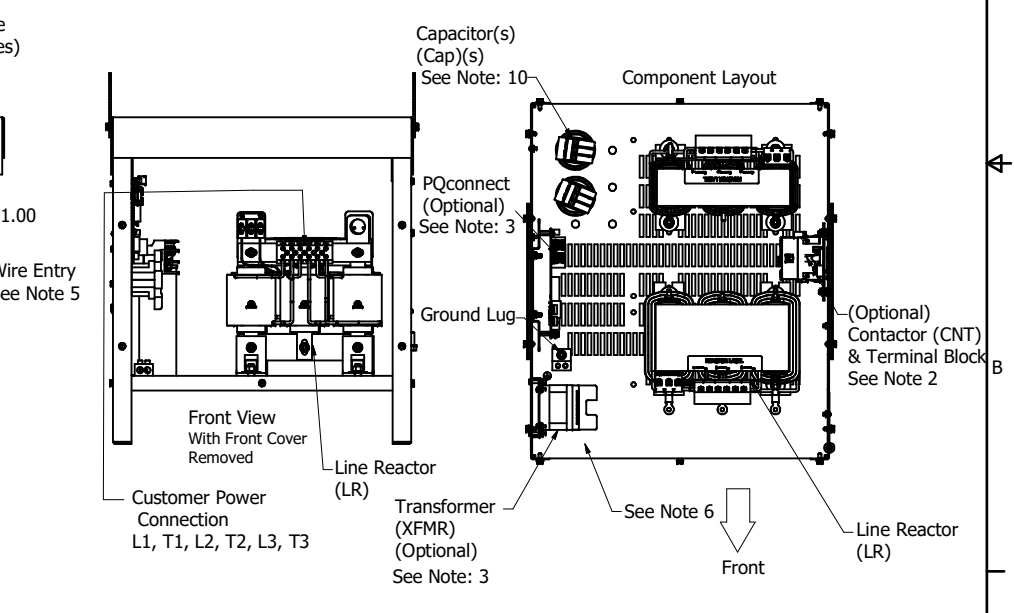
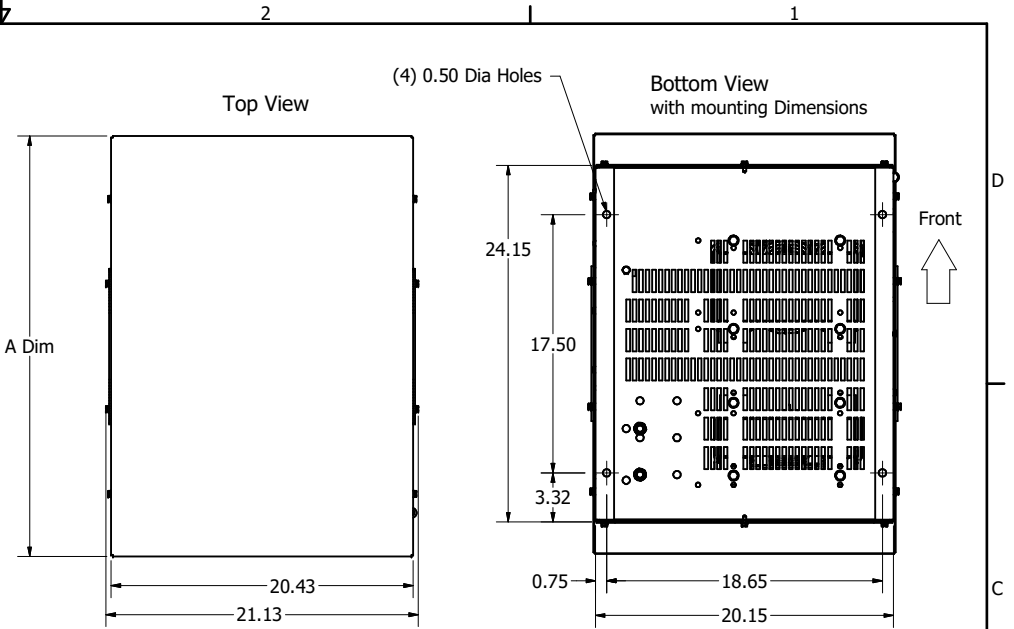
Terminal Block:
 Customer Input Connections.
 L1,T1, L2,T2, L3,T3
 Wire Range:
 1- 4 AWG. Torque : 35 IN-LBS (3.95 Nm)
 6- 14 AWG. Torque : 30 IN-LBS (3.39 Nm)
 16- 20 AW Torque : 25 IN-LBS (2.28 Nm)
 22 AWG. Torque : 20 IN-LBS (2.26 Nm)

Ground Lug
 Wire Range: 2/0-3 AWG. Torque : 50 IN-LBS (5.6 Nm)
 4-6 AWG. Torque : 45 IN-LBS (5.1 Nm)
 8 AWG. Torque : 40 IN-LBS (4.5 Nm)
 10-14 AWG. Torque : 35 IN-LBS (4.0 Nm)



Dimension Table				
Enclosure	"A" Dim	"B" Dim	"C" Dim	"D" Dim
Type 1	26.5	23.0	2.0	1.2
Type 3R	28.5	22.1	3.9	2.1

- Notes:
- Refer to manual for wire size and torque.
 - Contactor (CNT) optional, Customer to supply power to Contactor.
 - PQconnect option, comes with Contactor and Transformer.
 - Refer to schematic #32550-1, 32550-2.
 - Preferred wire entry area.
 - Wire entry is allowed through the bottom.
 - Enclosure is shown with a Type 3R top.
 - Use only hubs or fittings that comply with UL514B for Type 3R applications
 - Installation must meet all national and local codes.
 - Number, size & location can vary per Hp and voltage.



Material(s) Shall be RoHS Compliant

THE INFORMATION AND DESIGNS CONTAINED IN THIS DRAWING ARE CONFIDENTIAL AND THE PROPRIETARY PROPERTY OF ALLIED MOTION TECHNOLOGIES INC. AND ITS SUBSIDIARIES. NEITHER THIS DESIGN NOR ANY INFORMATION CONTAINED IN THIS DRAWING MAY BE REPRODUCED OR DISCLOSED TO OTHERS WITHOUT THE EXPRESS WRITTEN CONSENT OF ALLIED MOTION TECHNOLOGIES INC. AND ITS SUBSIDIARIES.				TOLERANCES (EXCEPT AS NOTED) DECIMAL .XX ± .25 .XXX ± .10		W132N10611 (Rev 11/16) Germantown, WI 53022 © 2023 TCI, LLC	
C	6201, 50HP Inductor Updates	3/15/2023	DSW	3/15/2023	FRACTIONAL ± 1/16	20HP To 500HP EPF, Type 1 and Type 3R	
B	6116, EPF Design Shift	12/5/2022	DSW	12/5/2022	ANGULAR ± 1°	EPF, Type 1 and Type 3R 109236DG	
A	As Built	8/18/2022	DSW	8/18/2022	SCALE: 1/4.5	DWN BY: DSW DATE: 8/18/2022 DRN: 109236DG	
NO	REVISION	DATE	BY			SHEET 1 OF 1	