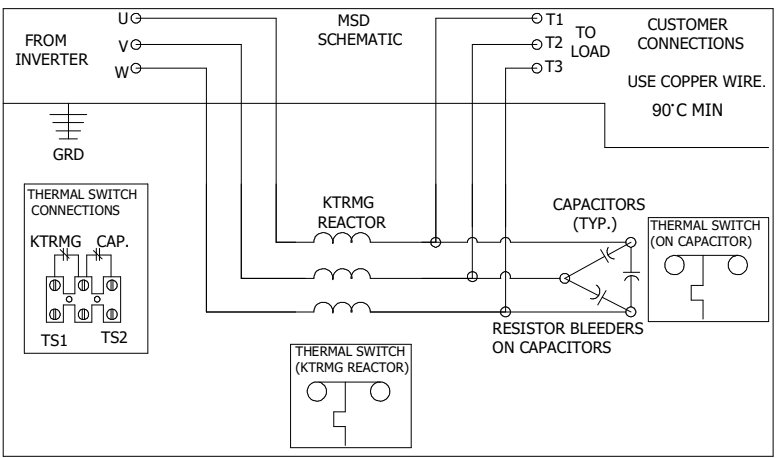
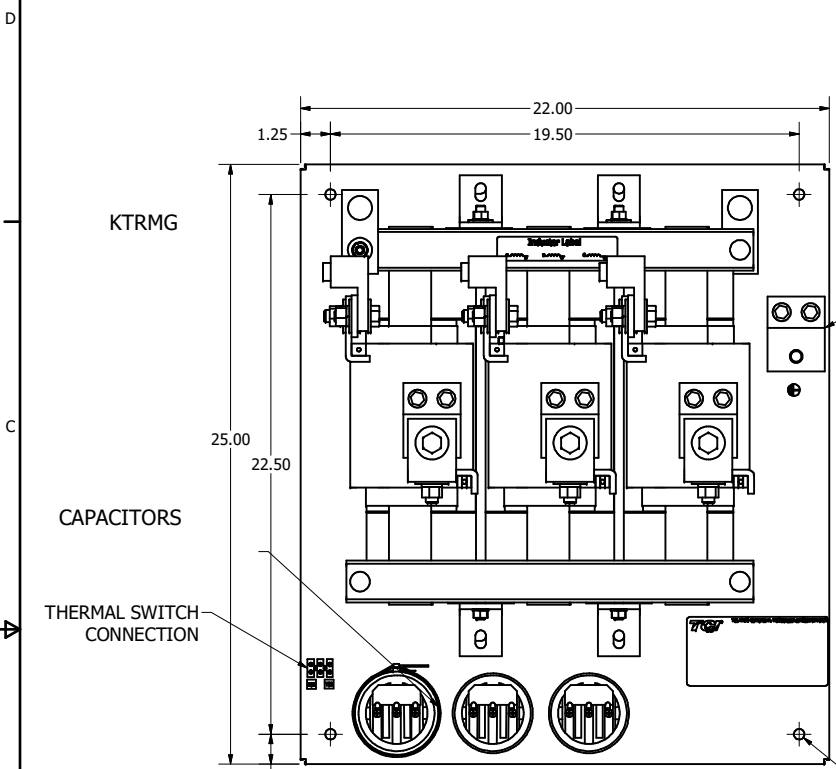
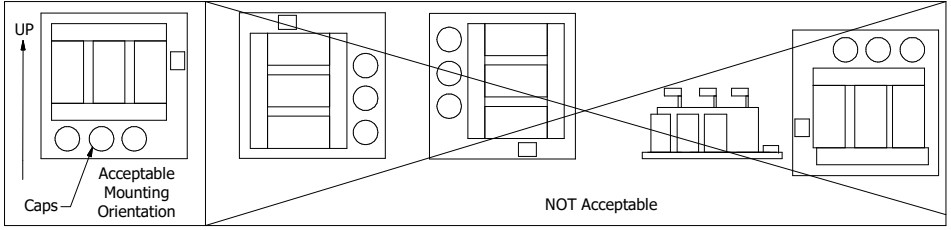


HGP PART NUMBER	HP	VOLT	CURRENT	WEIGHT	PRESSURE TERMINAL WIRE RANGE	X
MSD0200C000	200	600V	200 AMPS	330 LBS	(2) 350MCM-6AWG	9 IN
MSD0250C000	250	600V	250 AMPS	350 LBS	(2) 350MCM-6AWG	9 IN
MSD0305C000	300	600V	305 AMPS	360 LBS	(2) 350MCM-6AWG	9 IN

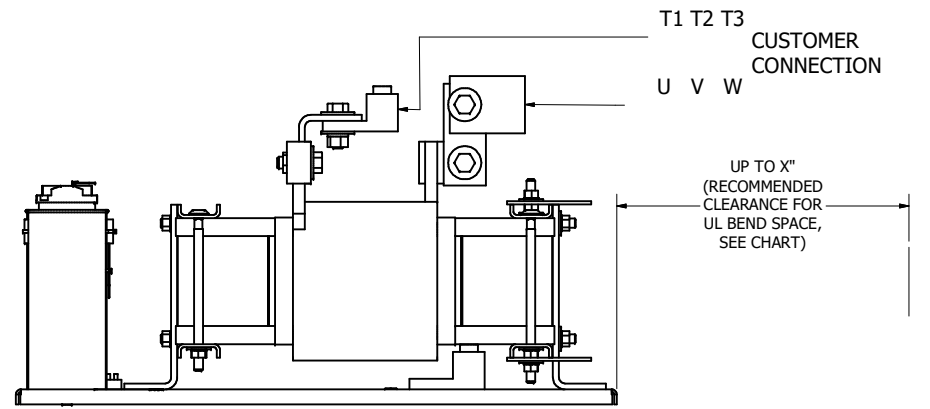
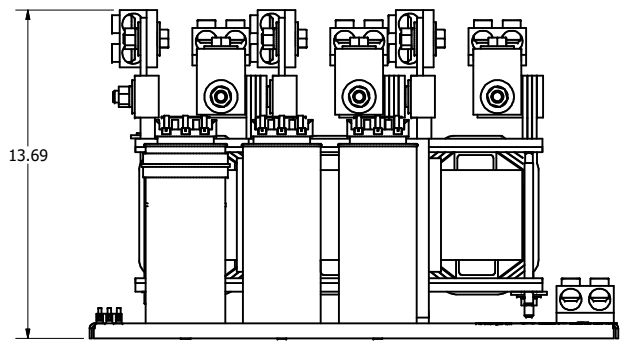


NOTE: FOR WIRE RANGE AND TORQUE INFORMATION SEE IOM MANUAL.

GROUND LUG



Ø0.44  
4 Places



CUSTOMER IS RESPONSIBLE FOR PROPER COOLING OF FILTER COMPONENTS

CUSTOMER IS RESPONSIBLE FOR INSTALLATION TO MEET ALL NATIONAL AND LOCAL ELECTRICAL CODES.

DIMENSIONS IN INCHES (EXCEPT AS NOTED) TOLERANCES (EXCEPT AS NOTED) DECIMAL .XX ± .03 .XXX ± .010 FRACTIONAL ± 1/32 ANGULAR ± 1°	THE INFORMATION AND DESIGN CONTAINED IN THIS DRAWING ARE CONFIDENTIAL AND THE PROPRIETARY PROPERTY OF ALLIANT INC AND ITS SUBSIDIARIES. NEITHER THIS DESIGN NOR ANY INFORMATION CONTAINED IN THIS DRAWING MAY BE REPRODUCED OR DISCLOSED TO OTHERS WITHOUT THE EXPRESS WRITTEN CONSENT OF ALLIANT INC AND ITS SUBSIDIARIES.	DRN BY	JRN	W132N10611 Grant Drive Germantown, WI 53022 © 2026 Alliant Inc.							
		DATE	06/28/22								
NO ECO		REVISION	DATE	BY	SCALE	1/3	DRN NO.	109197DG	SIZE	C	SHT. 1 OF 1



MotorShield Sinewave Filter  
200-350 Amp, 600/3/60, Open