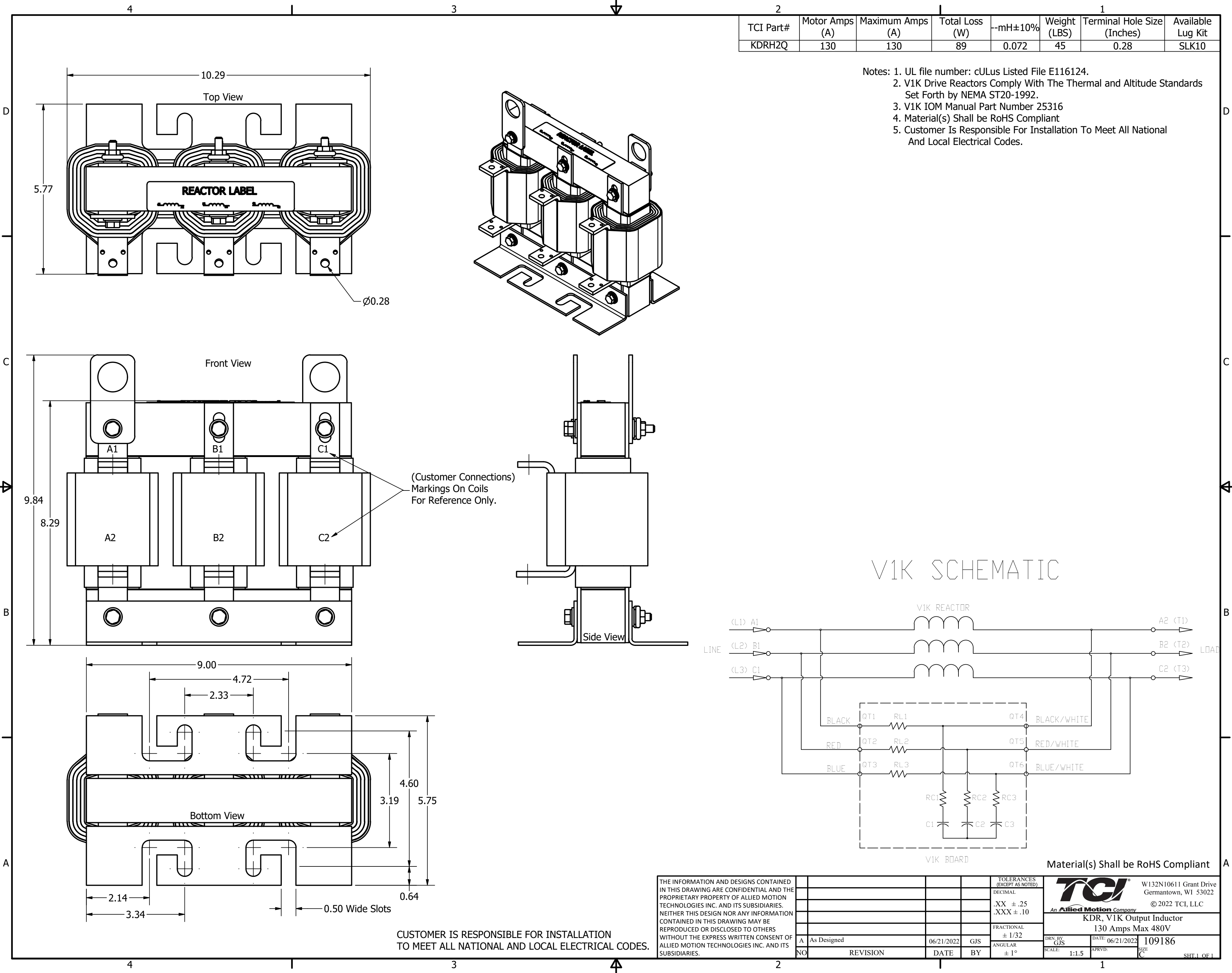




| TCI Part# | Motor Amps (A) | Maximum Amps (A) | Total Loss (W) | --mH±10% | Weight (LBS) | Terminal Hole Size (Inches) | Available Lug Kit |
|-----------|----------------|------------------|----------------|----------|--------------|-----------------------------|-------------------|
| KDRH2Q | 130 | 130 | 89 | 0.072 | 45 | 0.28 | SLK10 |

- Notes: 1. UL file number: cULus Listed File E116124.
2. V1K Drive Reactors Comply With The Thermal and Altitude Standards Set Forth by NEMA ST20-1992.
3. V1K IOM Manual Part Number 25316
4. Material(s) Shall be RoHS Compliant
5. Customer Is Responsible For Installation To Meet All National And Local Electrical Codes.



CUSTOMER IS RESPONSIBLE FOR INSTALLATION TO MEET ALL NATIONAL AND LOCAL ELECTRICAL CODES.

| | | | | | | | |
|--|-------------|------------|-----|--|--|------------------------------|--|
| THE INFORMATION AND DESIGNS CONTAINED IN THIS DRAWING ARE CONFIDENTIAL AND THE PROPRIETARY PROPERTY OF ALLIED MOTION TECHNOLOGIES INC. AND ITS SUBSIDIARIES. NEITHER THIS DESIGN NOR ANY INFORMATION CONTAINED IN THIS DRAWING MAY BE REPRODUCED OR DISCLOSED TO OTHERS WITHOUT THE EXPRESS WRITTEN CONSENT OF ALLIED MOTION TECHNOLOGIES INC. AND ITS SUBSIDIARIES. | | | | | | TOLERANCES (EXCEPT AS NOTED) |  W132N10611 Grant Drive Germantown, WI 53022 © 2022 TCI, LLC |
| | | | | | | DECIMAL | |
| | | | | | | .XX ± .25 .XXX ± .10 | |
| | | | | | | FRACTIONAL ± 1/32 | |
| | | | | | | ANGULAR ± 1° | |
| A | As Designed | 06/21/2022 | GJS | | | DRN. BY: GJS SCALE: 1:1.5 | DATE: 06/21/2022 APRVD:  SIZE: C |
| NO | REVISION | DATE | BY | | | | 109186 SHT. 1 OF 1 |