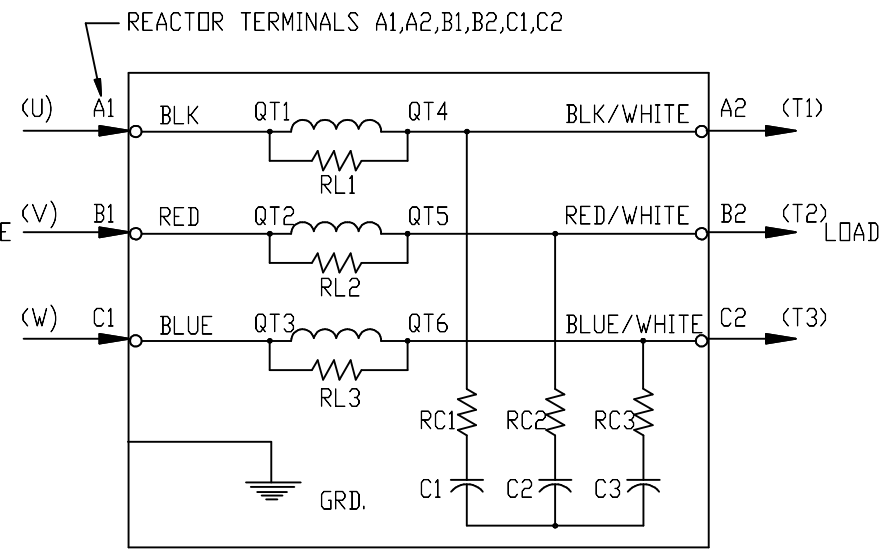


See V1K Installation Guide For Terminal Wire Size And Torque Information.

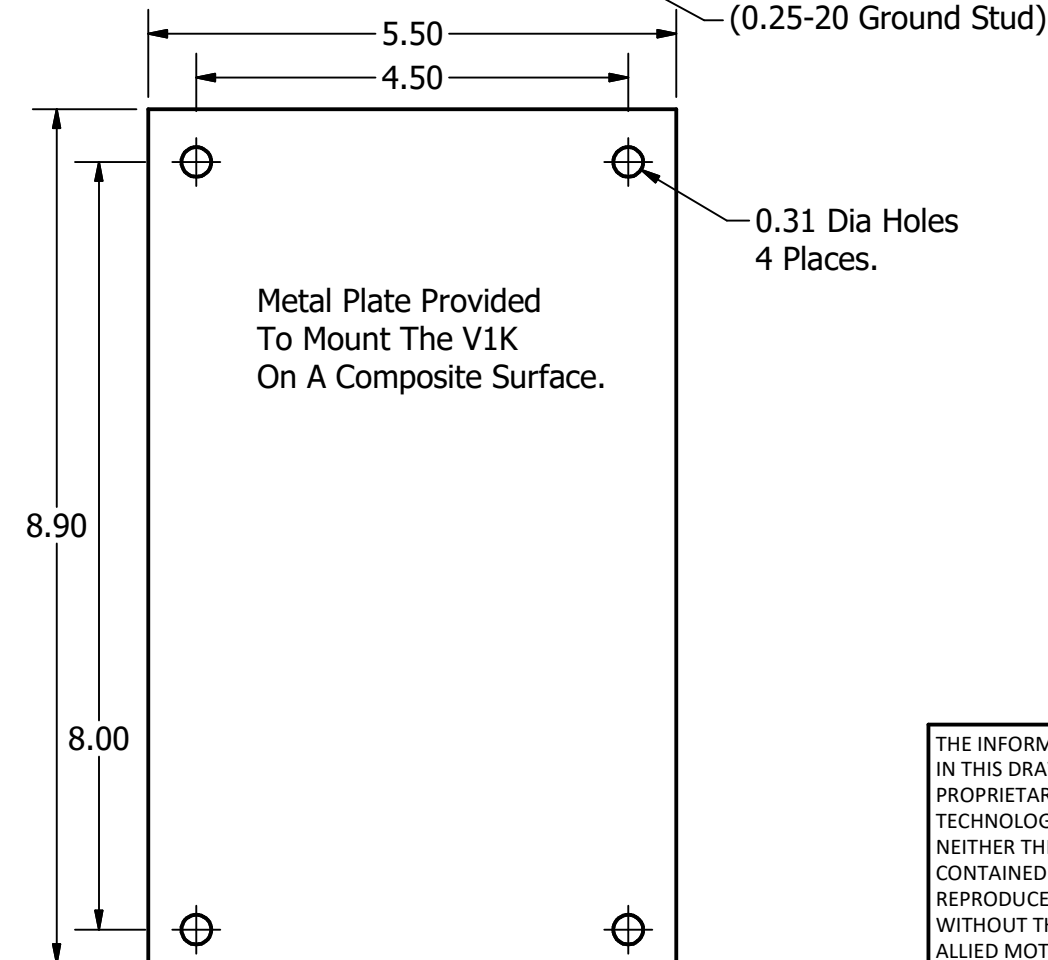
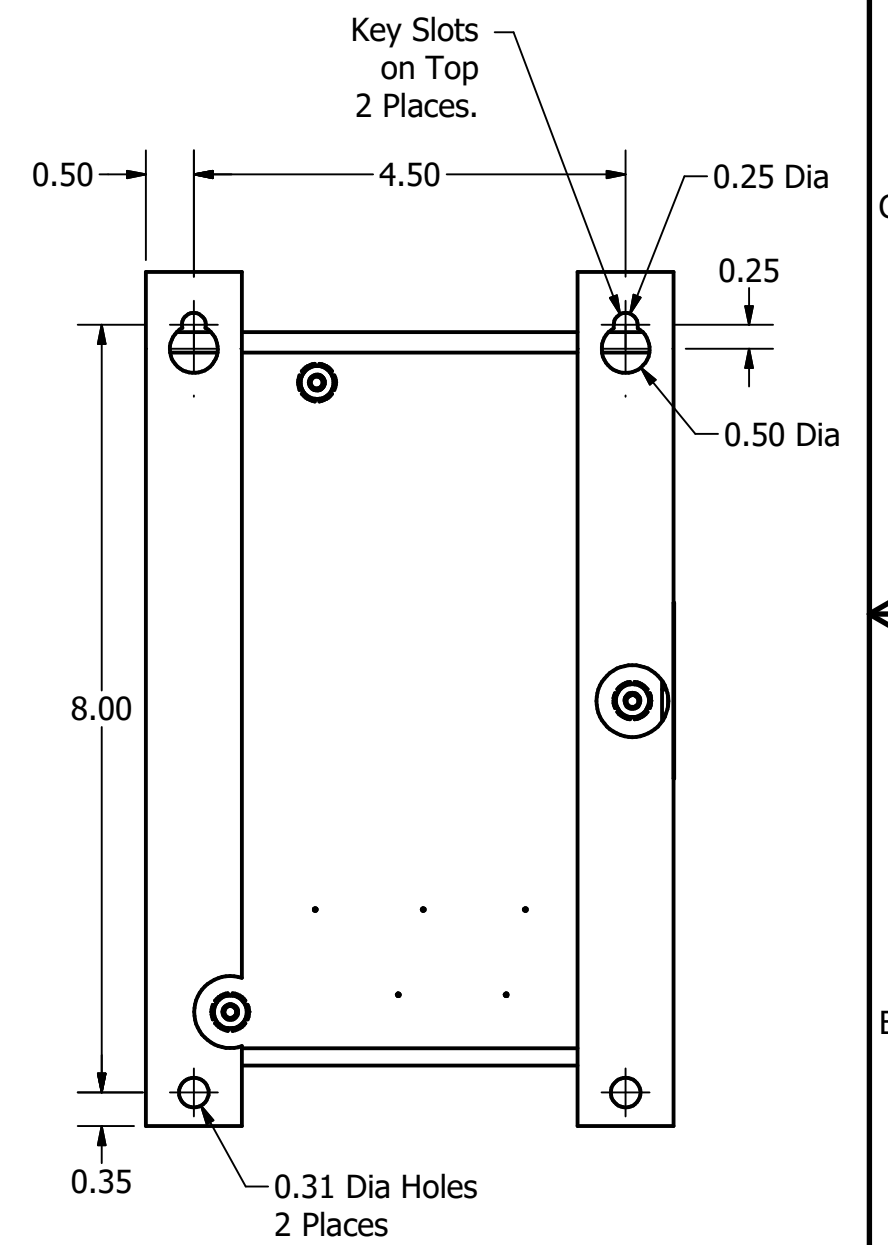
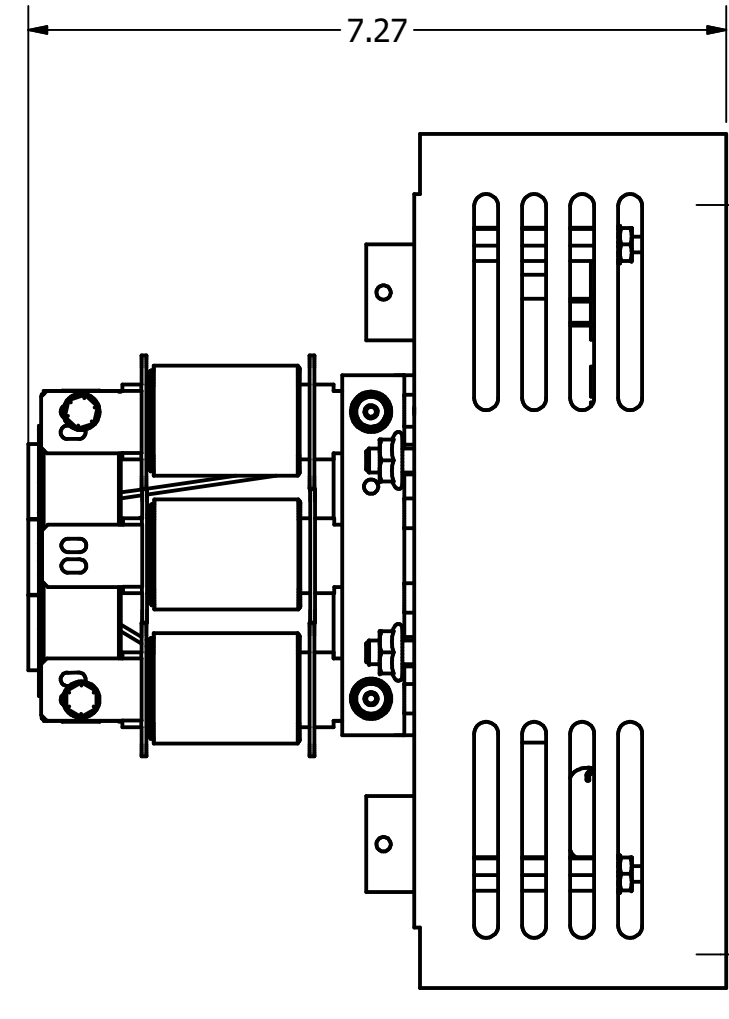
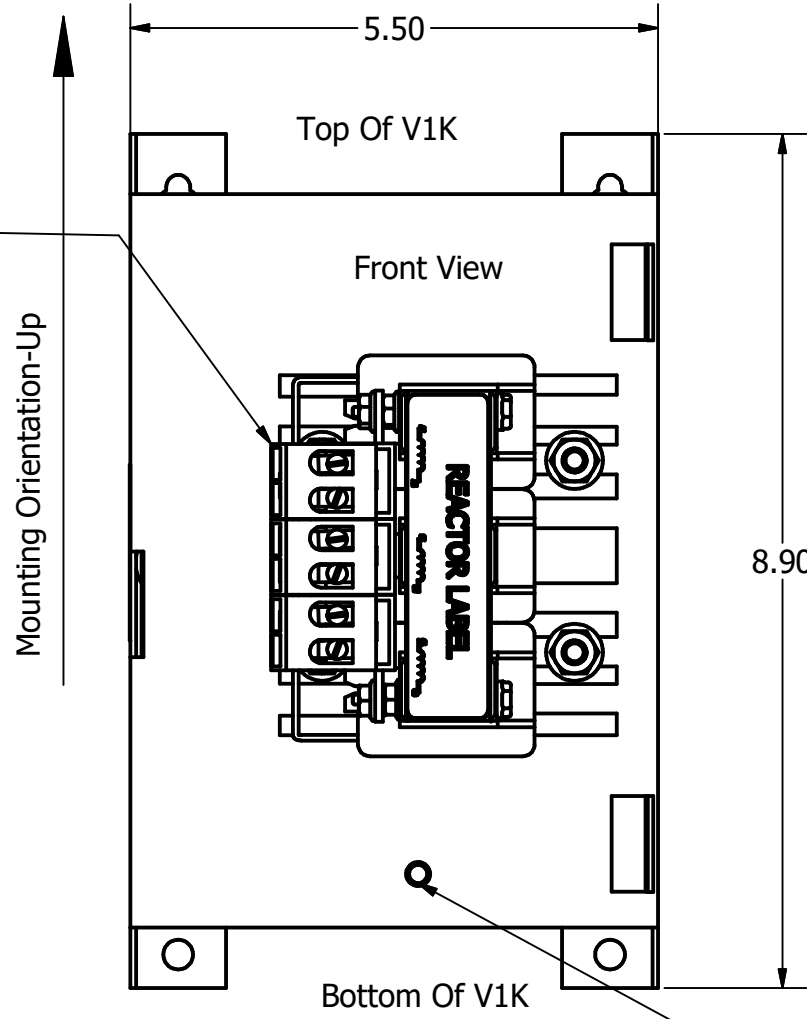
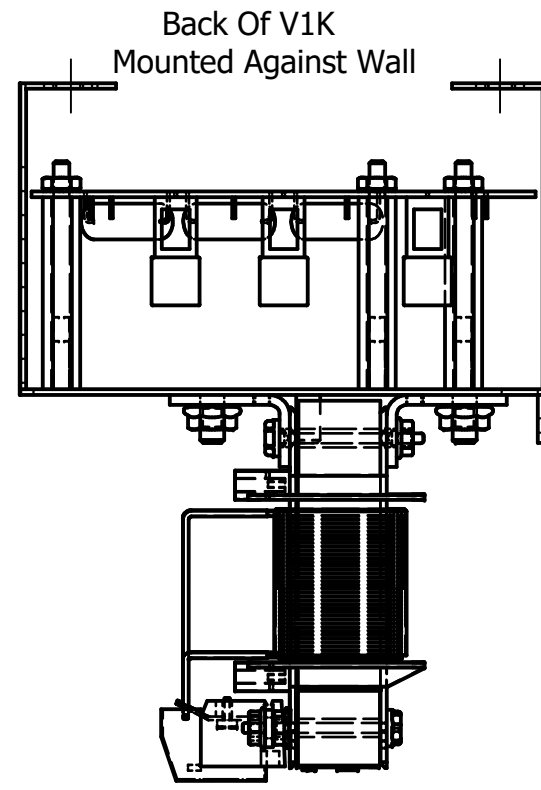
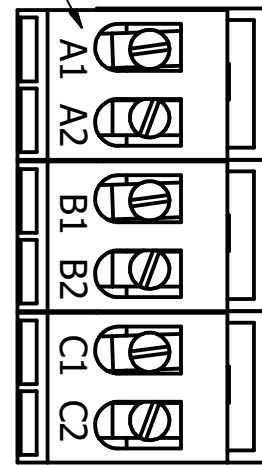
Note: Maintain Clearance of 3 Inches On All Sides To Other Equipment.

V1K Part Number	Max Voltage	Amps	Phase	Weight (LBS)
V1K2A00EX	600	2	3	8
V1K3A00EX	600	3	3	8
V1K4A00EX	600	4	3	8
V1K6A00EX	600	6	3	8
V1K8A00EX	600	8	3	8
V1K12A00EX	600	12	3	8




REACTOR AND BOARD ASSEMBLY CONNECTIONS

(Customer Connections) Markings On Terminal Block For Reference Only.



Customer Is Responsible For Installation to Meet All National And Local Electrical Codes.

<p>THE INFORMATION AND DESIGNS CONTAINED IN THIS DRAWING ARE CONFIDENTIAL AND THE PROPRIETARY PROPERTY OF ALLIED MOTION TECHNOLOGIES INC. AND ITS SUBSIDIARIES. NEITHER THIS DESIGN NOR ANY INFORMATION CONTAINED IN THIS DRAWING MAY BE REPRODUCED OR DISCLOSED TO OTHERS WITHOUT THE EXPRESS WRITTEN CONSENT OF ALLIED MOTION TECHNOLOGIES INC. AND ITS SUBSIDIARIES.</p>				TOLERANCES (EXCEPT AS NOTED)		 <p>W132N10611 Grant Drive Germantown, WI 53022 © 2021 TCI, LLC</p>
				DECIMAL		
.XX ± .25		FRACTIONAL		DRN BY	DATE	109001DG
.XXX ± .10		ANGULAR		JRN	07/30/21	
± 1/32		± 1°		NO	REVISION	SCALE: To Fit
A As Built		DATE		BY		SIZE
NO		DATE		BY		C