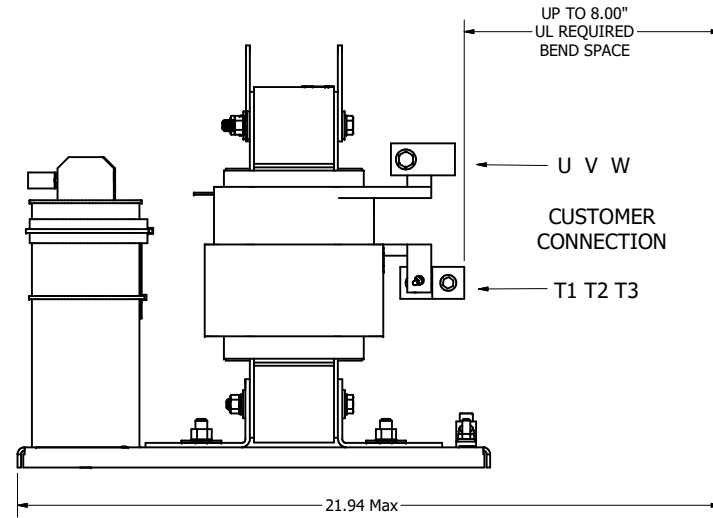
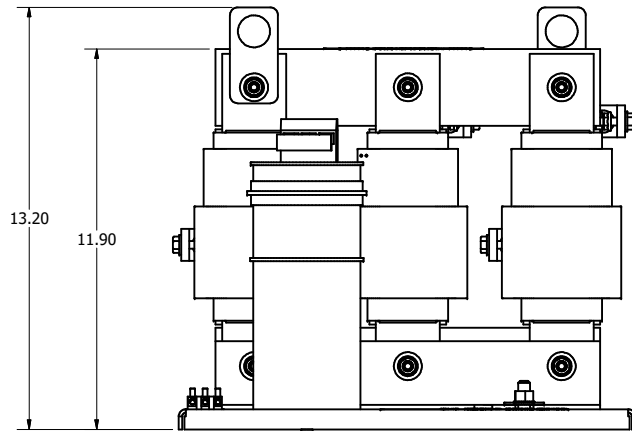
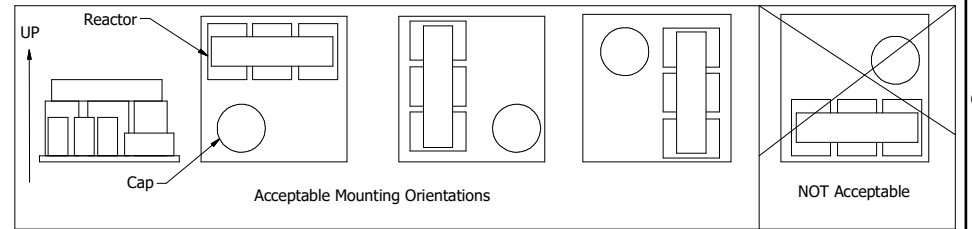
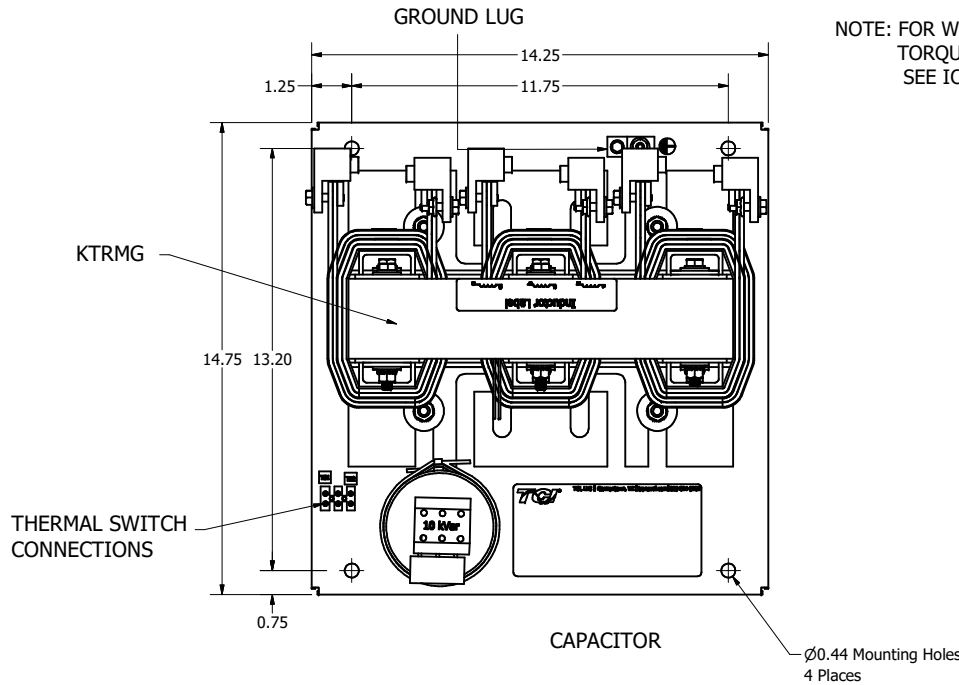
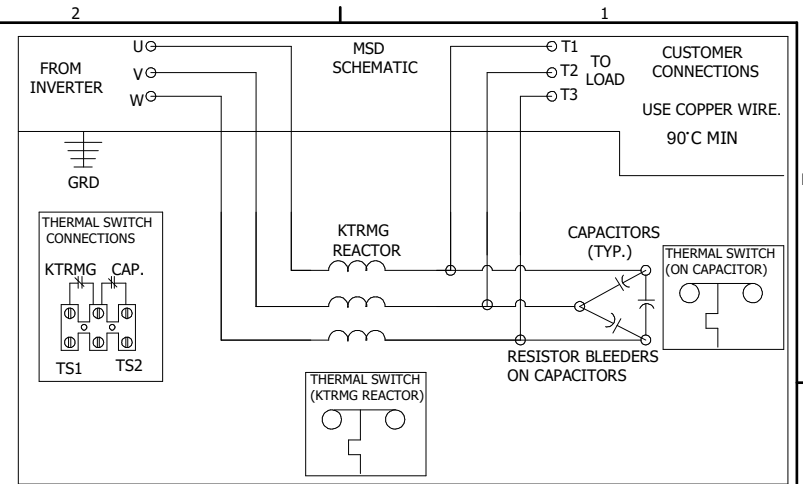


MSD PART NUMBER	HP	VOLT	CURRENT	WEIGHT	PRESSURE TERMINAL WIRE RANGE	BEND SPACE
MSD0065C000	60	600V	65 AMPS	120LBS	2/0 - 14AWG	6.00"
MSD0080C000	75	600V	80 AMPS	138LBS	2/0 - 14AWG	6.00"
MSD0110C000	100	600V	110 AMPS	141LBS	250MCM -1 AWG	8.00"
MSD0130C000	125	600V	130 AMPS	148LBS	250MCM -1 AWG	8.00"

NOTE: FOR WIRE RANGE AND TORQUE INFORMATION SEE IOM MANUAL.



CAPACITOR DISCHARGE LABEL TO SHIP WITH PANEL

CUSTOMER IS RESPONSIBLE FOR PROPER COOLING OF FILTER COMPONENTS CAPACITORS MAXIMUM AMBIENT 50°C

CUSTOMER IS RESPONSIBLE FOR INSTALLATION TO MEET ALL NATIONAL AND LOCAL ELECTRICAL CODES.

DIMENSIONS IN INCHES (EXCEPT AS NOTED) TOLERANCES (EXCEPT AS NOTED) DECIMAL .XX ± .03 .XXX ± .010 FRACTIONAL ± 1/32 ANGULAR ± 1°		THE INFORMATION AND DESIGN CONTAINED IN THIS DRAWING ARE CONFIDENTIAL AND THE PROPRIETARY PROPERTY OF ALLIANT INC. AND ITS SUBSIDIARIES. NEITHER THIS DESIGN NOR ANY INFORMATION CONTAINED IN THIS DRAWING MAY BE REPRODUCED OR DISCLOSED TO OTHERS WITHOUT THE EXPRESS WRITTEN CONSENT OF ALLIANT INC. AND ITS SUBSIDIARIES.		DES BY: JRN	DATE: 08/27/20		W132N10611 Grant Drive Germantown, WI 53022 © 2026 Alliant Inc.
B	6884	Fix Table Category	12/04/24	JRN	MotorShield Sinewave Filter 65-130 Amp, 600/3/60, Open		
A		As Designed	08/27/20	JRN	SCALE: 1/3	DEN. NO. 108704DG	SIZE C
NO	ECO	REVISION	DATE	BY	1/3	108704DG	SHT. 1 OF 1