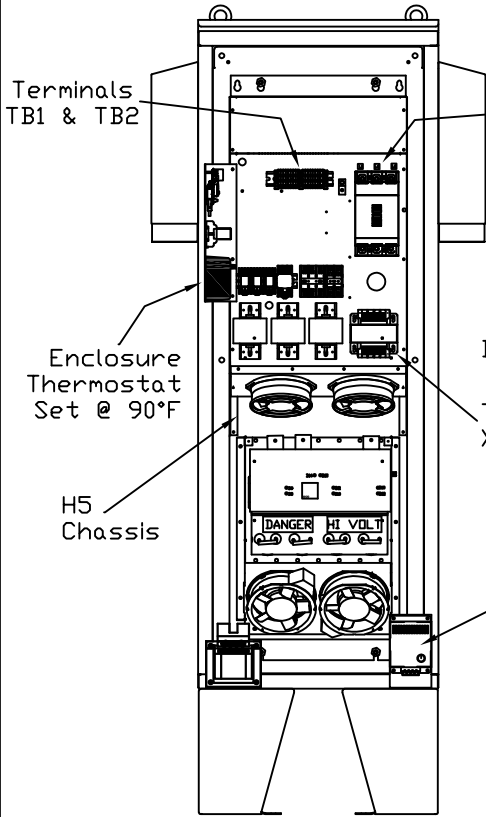
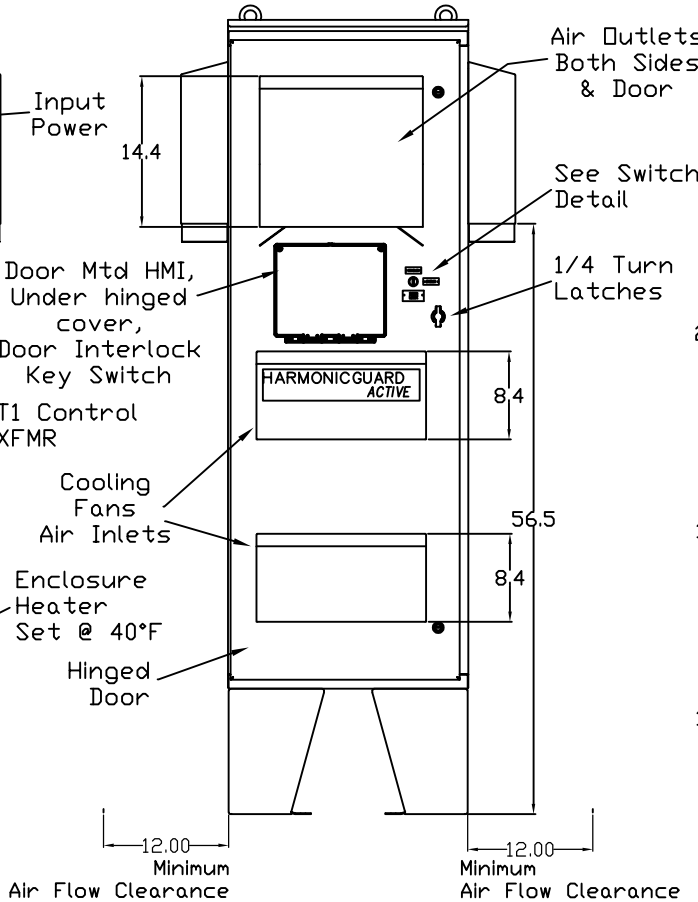


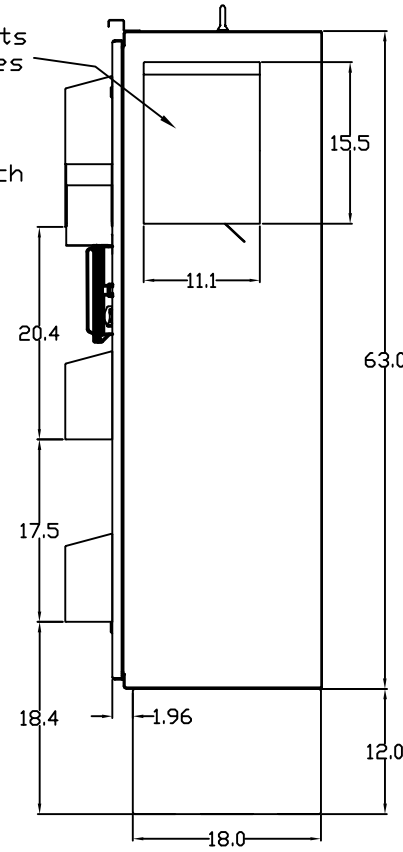
Internal View



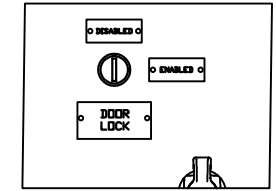
Front View



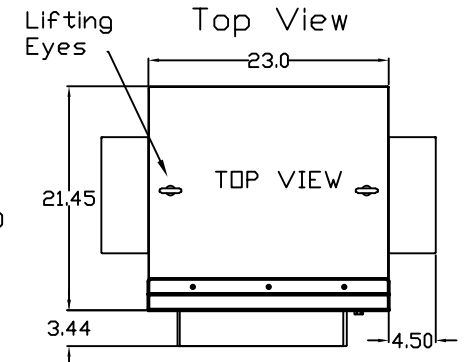
Side View



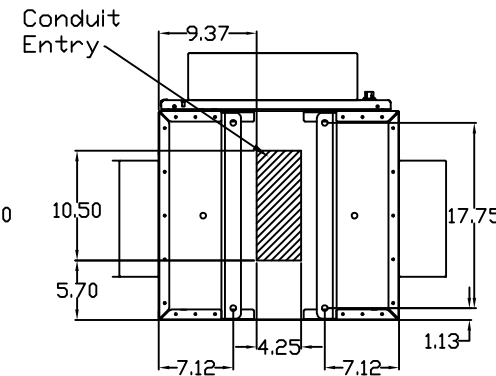
switch detail



Top View



Bottom View



Drawings:
 General Schematic: 28359
 Customer Connection #25027-3
 Current Transformer #26461
 Remote HMI Drawing #28283-1

Notes:
 Weight lbs (Kg) 685.3 (310.9)
 Dimensions are in Inches
 Finish: ANSI-61 Gray

The 50A unit is rated for 39A when applied with a 480V/600V autotransformer
 The 100A unit is rated for 78A when applied with a 480V/600V autotransformer

Size	Watt Loss	Btu/h
50 Amp	3,050	10,407
100 Amp	3,850	13,137

TCI, LLC CLAIMS PROPRIETARY RIGHTS IN THE MATERIAL HEREIN DISCLOSED. IT IS SUPPLIED WITHOUT PREJUDICE TO ANY PATENT RIGHTS OF TCI AND MAY NOT BE REPRODUCED OR USED TO MANUFACTURE ANYTHING SHOWN THEREIN WITHOUT WRITTEN PERMISSION FROM TCI.

NO	REVISION	DATE	BY
E	5641 Clearance note modified	6/22/21	JSG
D	Floor stand kit updated	4/15/21	JSG
C	watt loss update	9/16/20	MJS
B	added switch detail window	5/28/20	MJS
A	new product	5/22/20	MJS

TOLERANCES (EXCEPT AS NOTED)
DECIMAL
.XX ±.050
.XXX±.025
FRACTIONAL ± 1/32
ANGULAR ± 1°

TCI® W132 N10611 Grant Drive Germantown, WI 53022

Submittal/Installation Dwg, Type 3R
 Active Filter, 50-100A, Door Mtd HMI

DRN. BY	MJS	DATE	5/22/20	DWG. NO.	108656 SHT. 1 OF 1
SCALE	N/A	SIZE	A		