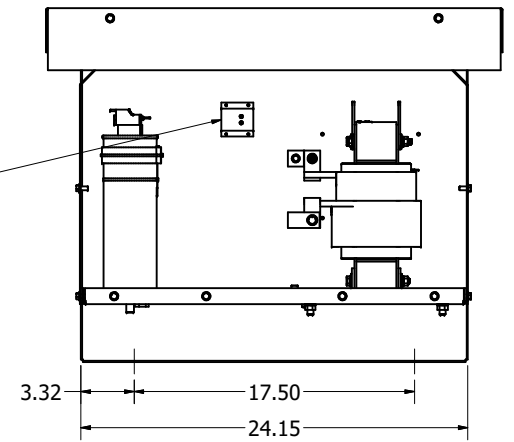
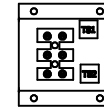


THERMAL SWITCH CONNECTION'S LOCATED ABOVE CAPACITOR.



NOTE: FOR WIRE RANGE AND TORQUE INFORMATION SEE IOM MANUAL.

| MSD PART NUMBER | HP  | VOLTAGE | CURRENT | WEIGHT | PRESSURE TERMINAL WIRE RANGE | GROUND LUG WIRE RANGE |
|-----------------|-----|---------|---------|--------|------------------------------|-----------------------|
| MSD0032B300     | N/A | 240V    | 32A     | 144 LB | 2/0-14 AWG                   | 2/0-14 AWG            |
| MSD0042B300     | 15  | 240V    | 42A     | 162 LB | 2/0-14 AWG                   | 2/0-14 AWG            |
| MSD0054B300     | 20  | 240V    | 54A     | 177 LB | 2/0-14 AWG                   | 2/0-14 AWG            |
| MSD0068B300     | 25  | 240V    | 68A     | 187 LB | 250MCM-1 AWG                 | 250MCM-6 AWG          |

CUSTOMER IS RESPONSIBLE FOR INSTALLATION TO MEET ALL NATIONAL AND LOCAL ELECTRICAL CODES.

THE INFORMATION AND DESIGNS CONTAINED IN THIS DRAWING ARE CONFIDENTIAL AND THE PROPRIETARY PROPERTY OF ALLIED MOTION TECHNOLOGIES INC. AND ITS SUBSIDIARIES. NEITHER THIS DESIGN NOR ANY INFORMATION CONTAINED IN THIS DRAWING MAY BE REPRODUCED OR DISCLOSED TO OTHERS WITHOUT THE EXPRESS WRITTEN CONSENT OF ALLIED MOTION TECHNOLOGIES INC. AND ITS SUBSIDIARIES.

| NO. | REVISION         | DATE    | BY  | SCALE          |
|-----|------------------|---------|-----|----------------|
| B   | Removed MSD logo | 2/19/24 | JSG | FRACTIONAL     |
| A   | As Designed      | 6/04/19 | JRN | ANGULAR ± 1/32 |
| NO  |                  |         |     | ± 1°           |

**TCL**  
 An Official Motion Group Company  
 W132N10611 (Rev. 11/20) Germantown, WI 53022  
 © 2022 TCL, LLC  
 MSD 32A-68A, Sinewave Filter  
 240V /3Phase /60Hz, Type 1/3R  
 DES. BY: JRN DATE: JRN  
 SCALE: 1:6 DRAWN: JRN  
 PART: 108176DG  
 SHEET: 1 OF 1