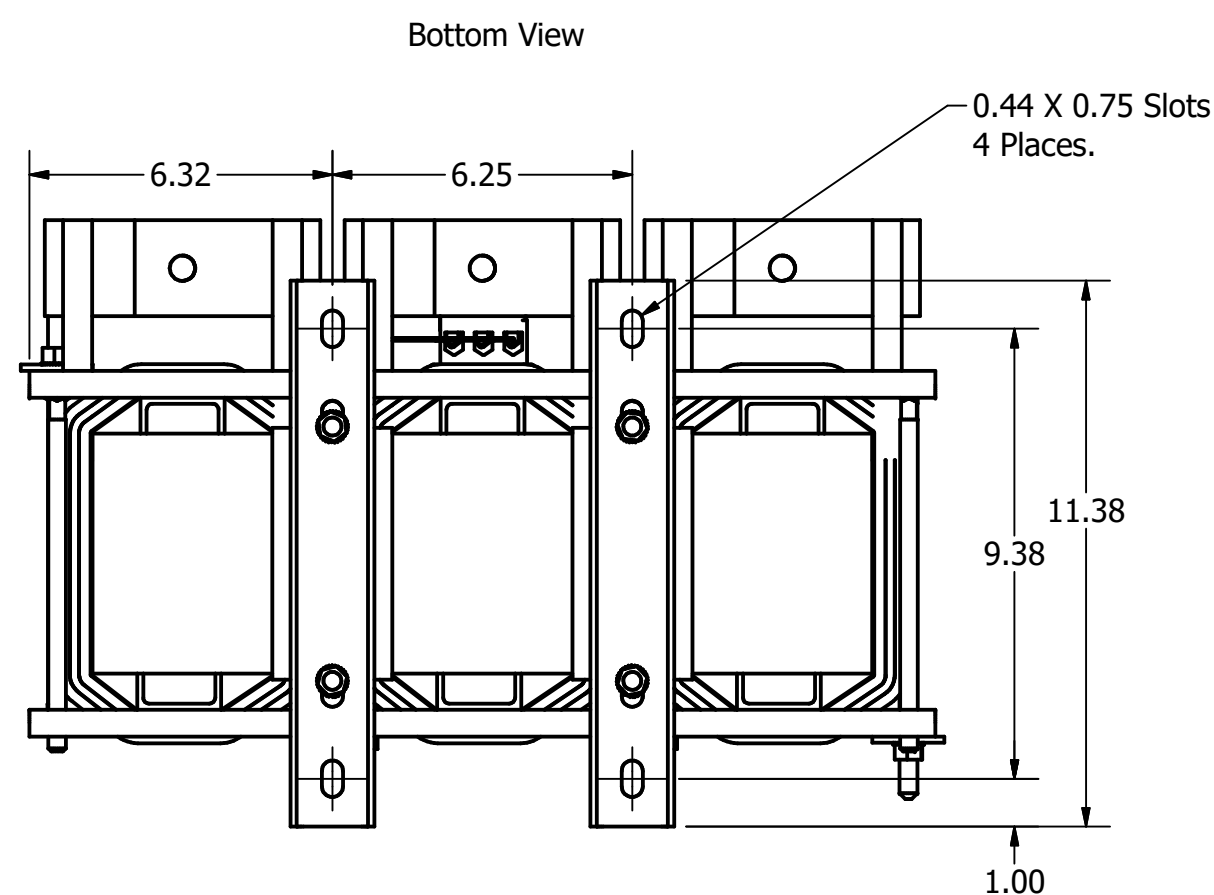
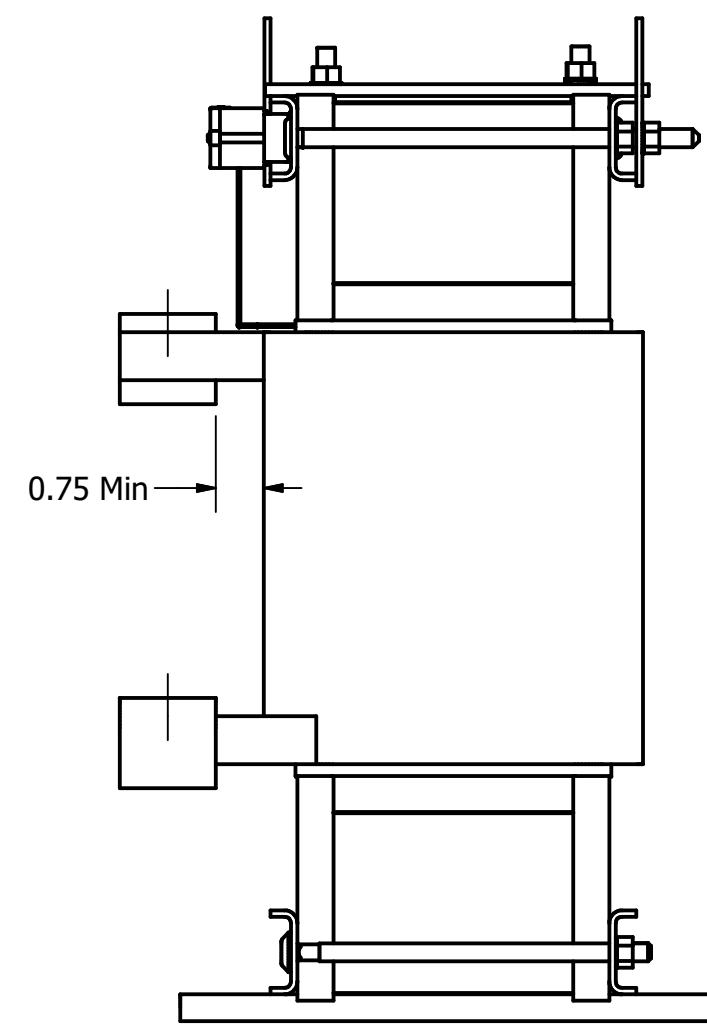
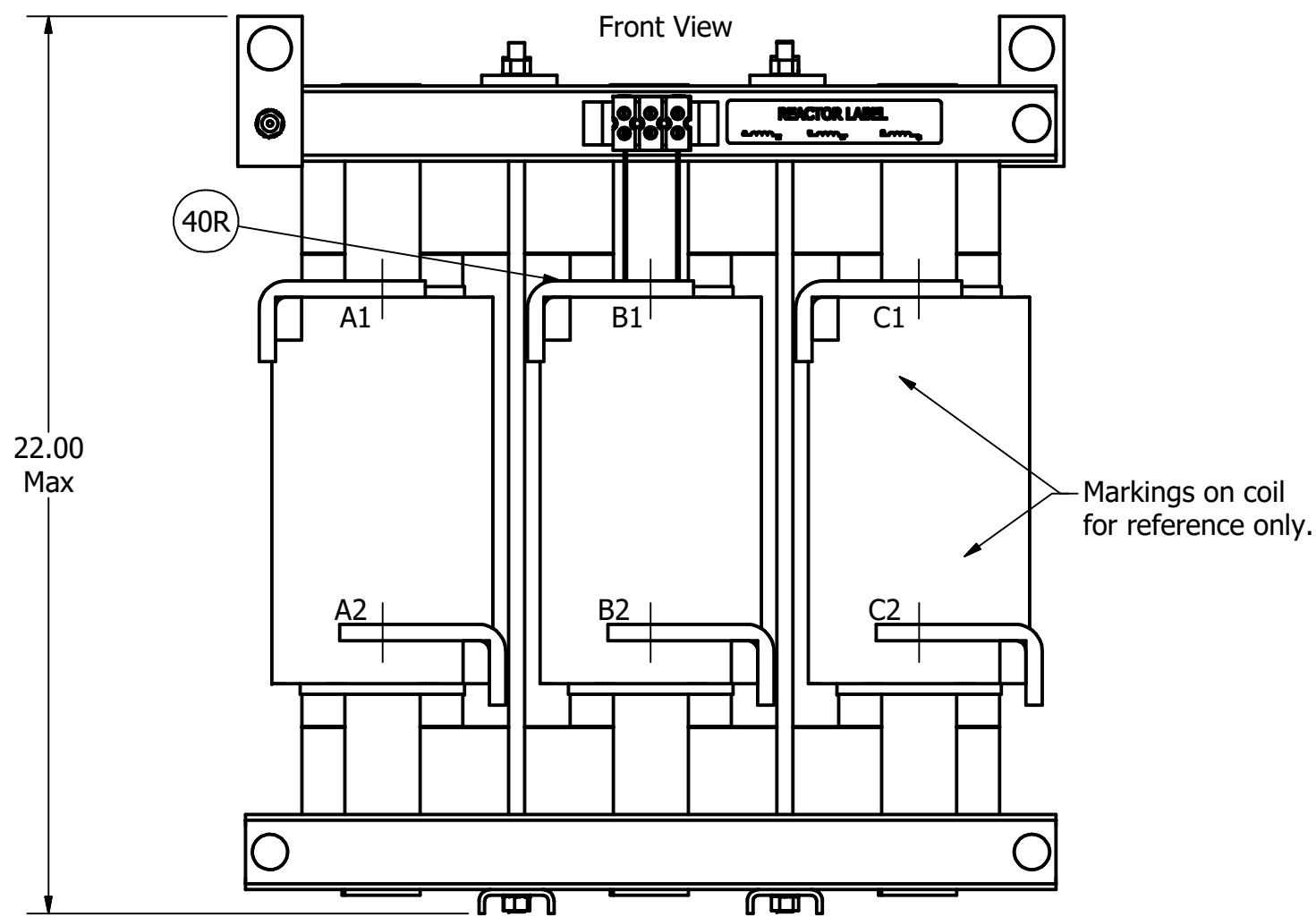
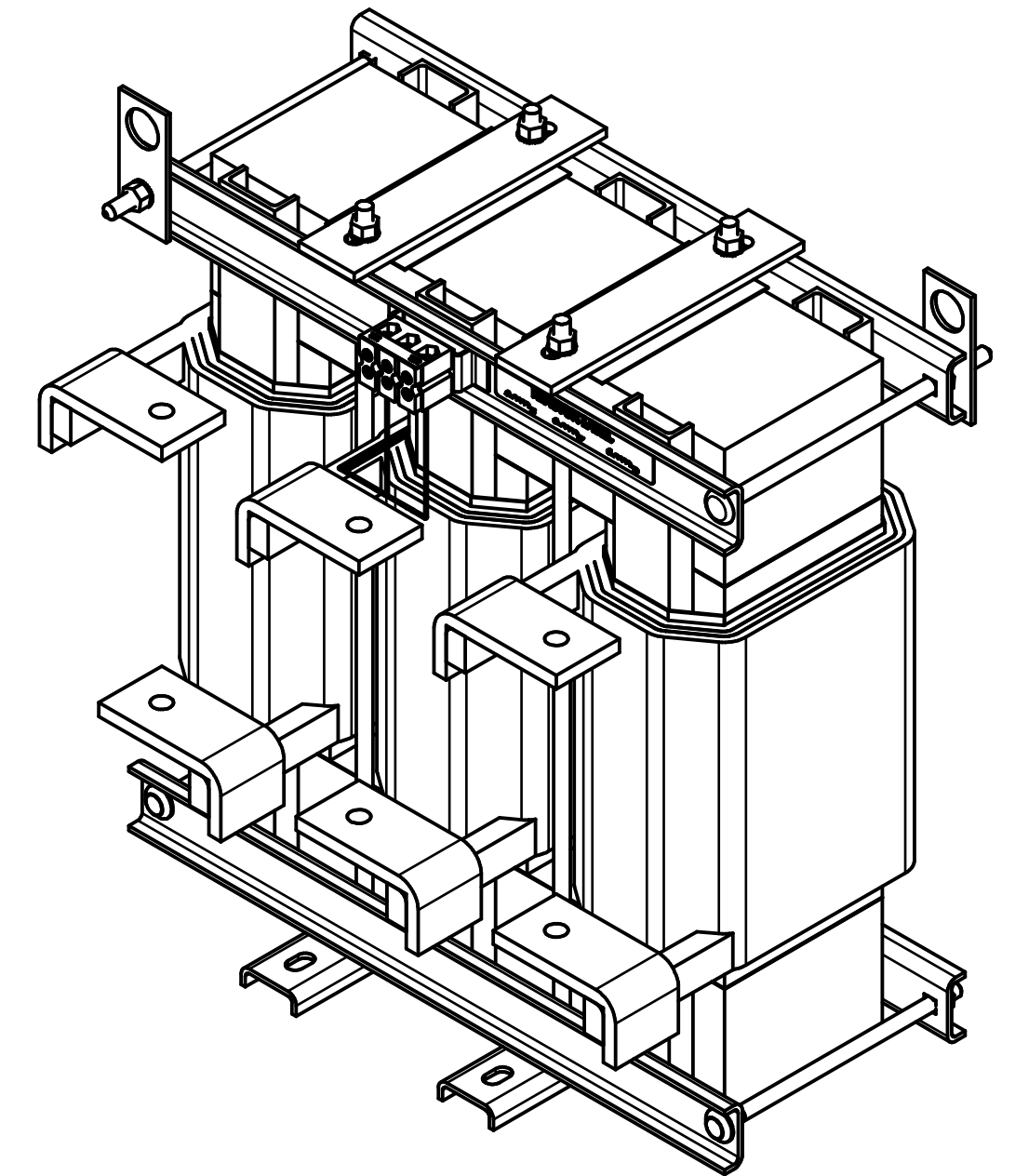
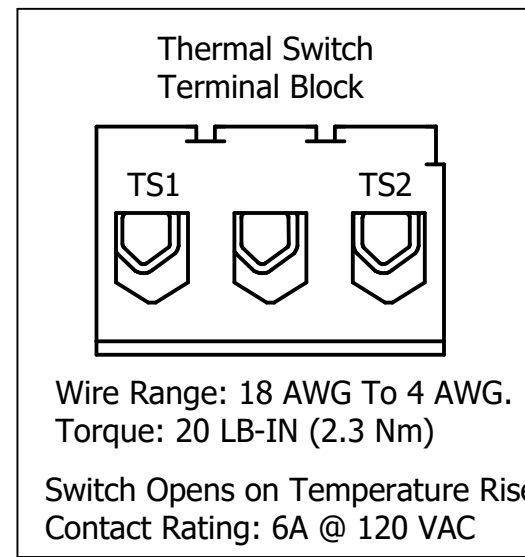
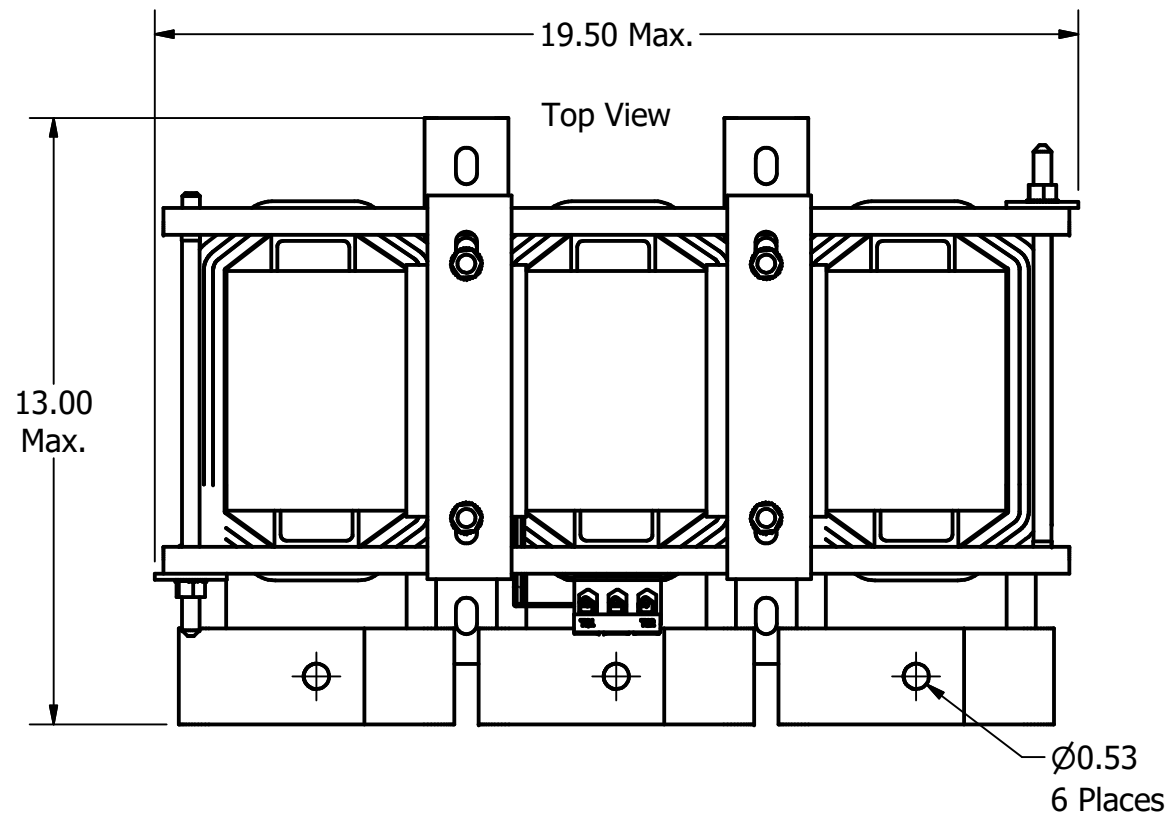


TCI Part Number	Rated Amps (A)	Rated Voltage (V)	Hz	---uH ±5%	Approx Weight (LBS)
KTRMG480A	480	480	60	100	455
KTRMG540A	540	480	60	90	450
KTRMG600A	600	480	60	80	450



TCI, LLC
Germentown, WI
www.transcoll.com
800-824-8282

(800) 824-8282 • transcoll.com

KDR Drive Reactor
KTRMG— (Motor Amps) Or (Rating Amps)
3 PH, 50/60Hz, 600V Max. —Max.
40C Amb Max, 155C Rise.

Customer Is Responsible For Installation to Meet All National And Local Electrical Codes.

Material(s) Shall be RoHS Compliant

TCI, LLC CLAIMS PROPRIETARY RIGHTS IN THE MATERIAL HEREIN DISCLOSED. IT IS SUPPLIED WITHOUT PREJUDICE TO ANY PATENT RIGHTS OF TCI AND MAY NOT BE REPRODUCED OR USED TO MANUFACTURE ANYTHING SHOWN THEREIN WITHOUT WRITTEN PERMISSION FROM TCI.				TOLERANCES (EXCEPT AS NOTED)	W132 N10611 Grant Drive Germentown, WI 53022
				DECIMAL	
				.XX ± .25 .XXX ± .10	
				FRACTIONAL ± 1/16	
A As Designed	05/27/19	JRN	ANGULAR ± 1°	DRN BY JRN	DATE 05/27/19
NO REVISION	DATE	BY		SCALE 1/4	APRVD: 108097DG

KTRMG Y Frame, Copper Bus
Reactor Drawing

SHT. 1 OF 1