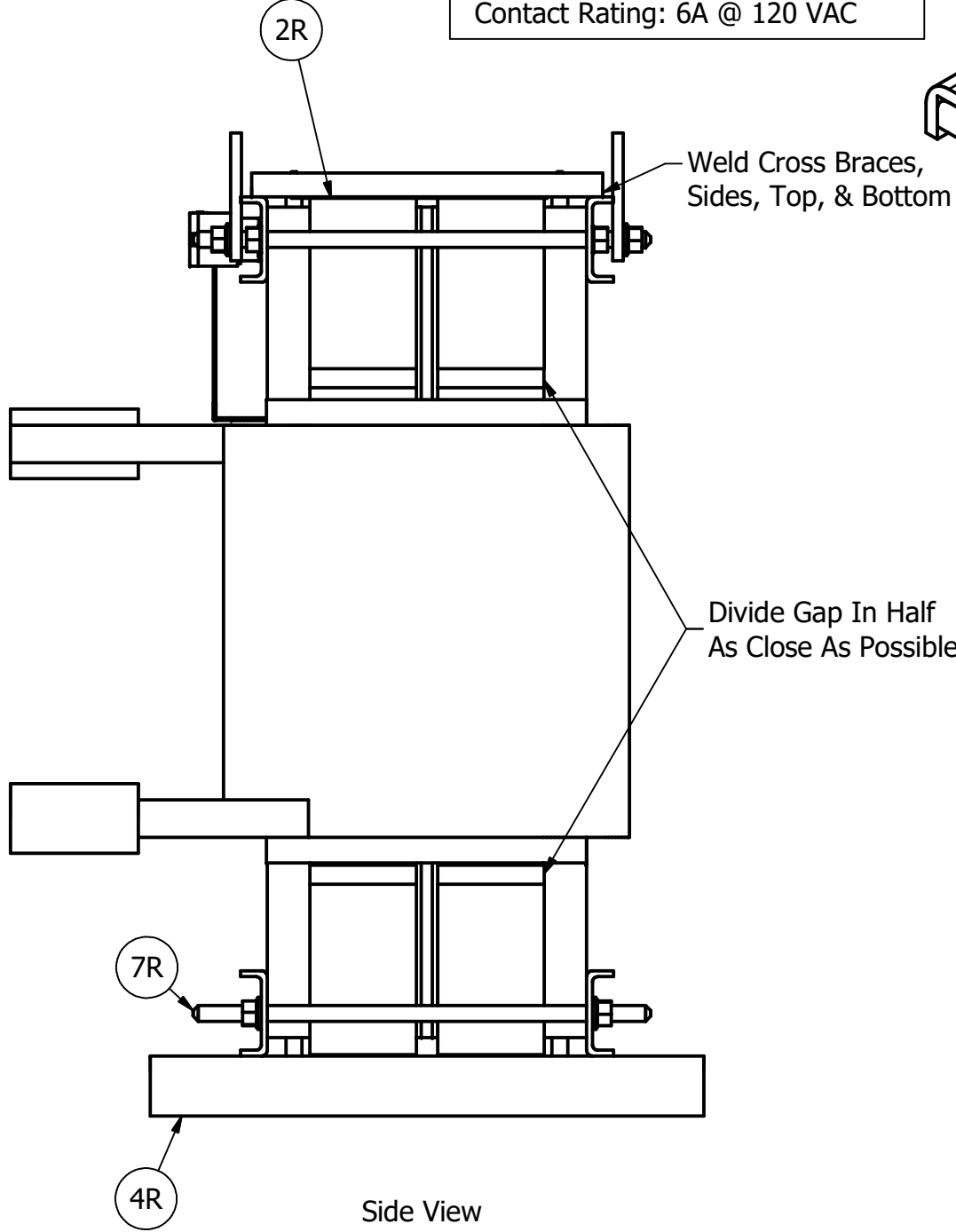
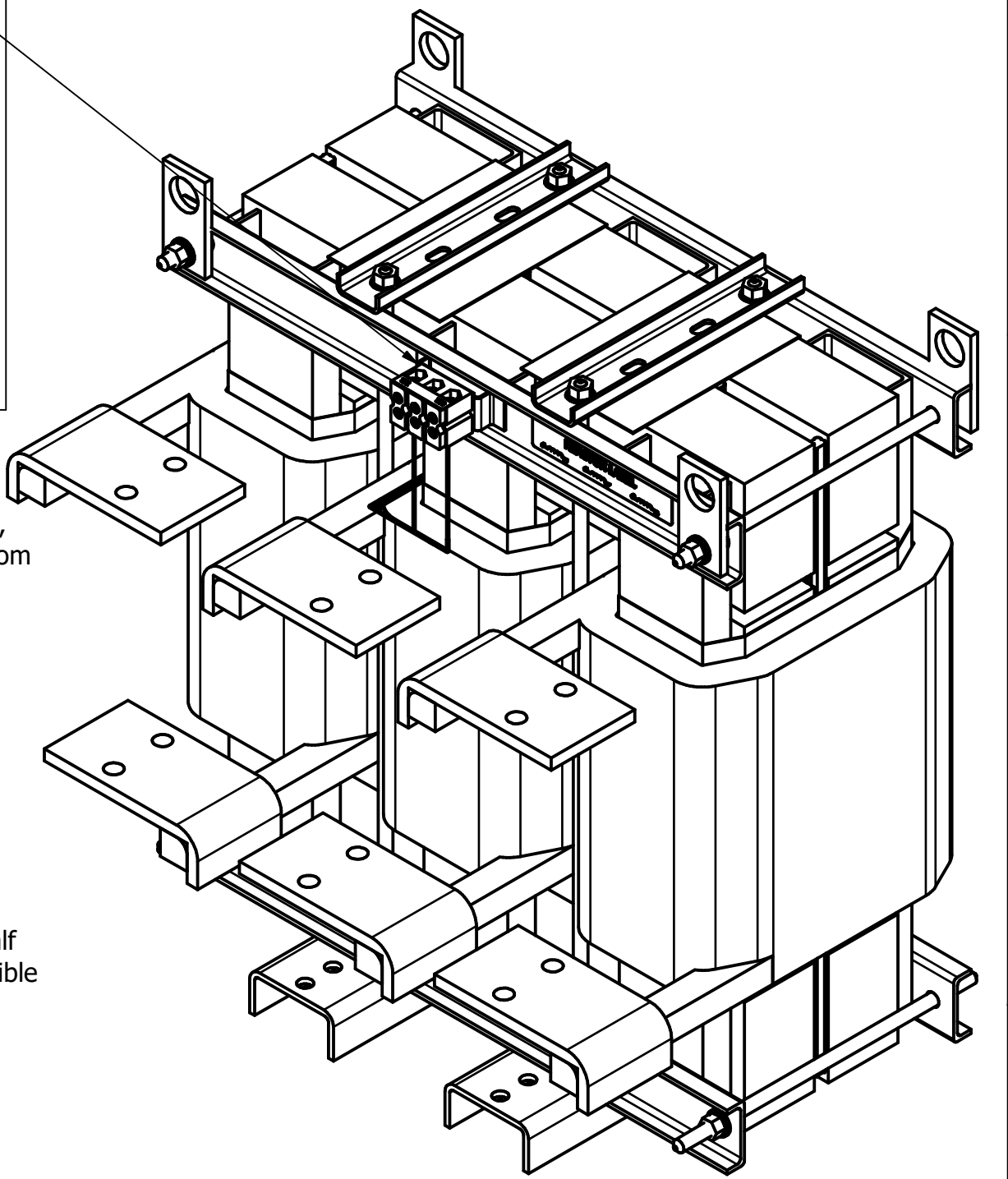
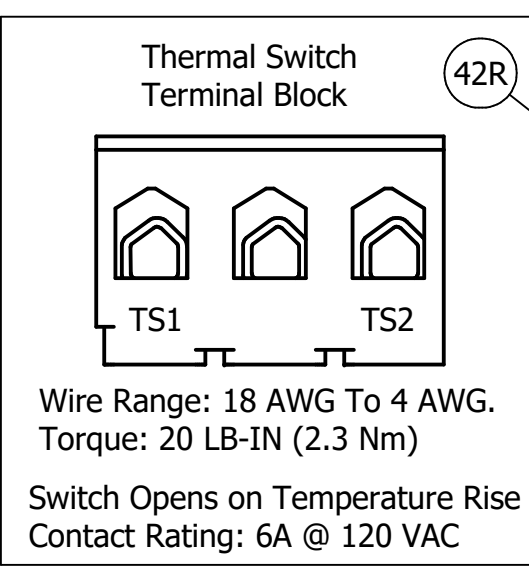


Install Thermal Switch After Reactor Is Treated.

Thermal Switch Must Be Placed On Magwire Next To Core RTV In Place. Wire To Terminal Block.

TCI Part Number	Rated Amps (A)	Rated Voltage (V)	Hz	---uH ±5%	Approx Weight (LBS)	Measured Gap	Item Number
KTRMG750C	750	600	60	80	600	.857	13R, 14R



TCI, LLC
 Germantown, WI
 www.transcoll.com
 800-824-8282

(800) 824-8282 • transcoll.com

KDR Drive Reactor
 KTRMG— (Motor Amps) Or (Rating Amps)
 3 PH, 50/60Hz, 600V Max. —Max.
 40C Amb Max, 155C Rise.

Strip - 4.00	5.50 Stack	Hi-Pot Volt	Dip
		2650	468-2

Customer Is Responsible For Installation to Meet All National And Local Electrical Codes.

Material(s) Shall be RoHS Compliant

TCI, LLC CLAIMS PROPRIETARY RIGHTS IN THE MATERIAL HEREIN DISCLOSED. IT IS SUPPLIED WITHOUT PREJUDICE TO ANY PATENT RIGHTS OF TCI AND MAY NOT BE REPRODUCED OR USED TO MANUFACTURE ANYTHING SHOWN THEREIN WITHOUT WRITTEN PERMISSION FROM TCI.				TOLERANCES (EXCEPT AS NOTED) DECIMAL .XX ± .25 .XXX ± .10 FRACTIONAL ± 1/16 ANGULAR ± 1°		W132 N10611 Grant Drive Germantown, WI 53022 KTRMG Y Frame, Copper Bus, Split Core Reactor Drawing	
NO	REVISION	DATE	BY	DRN BY JRN	DATE 08/19/19	108097-7	SCALE 1/4
							SIZE C
							SHT. 1 OF 1