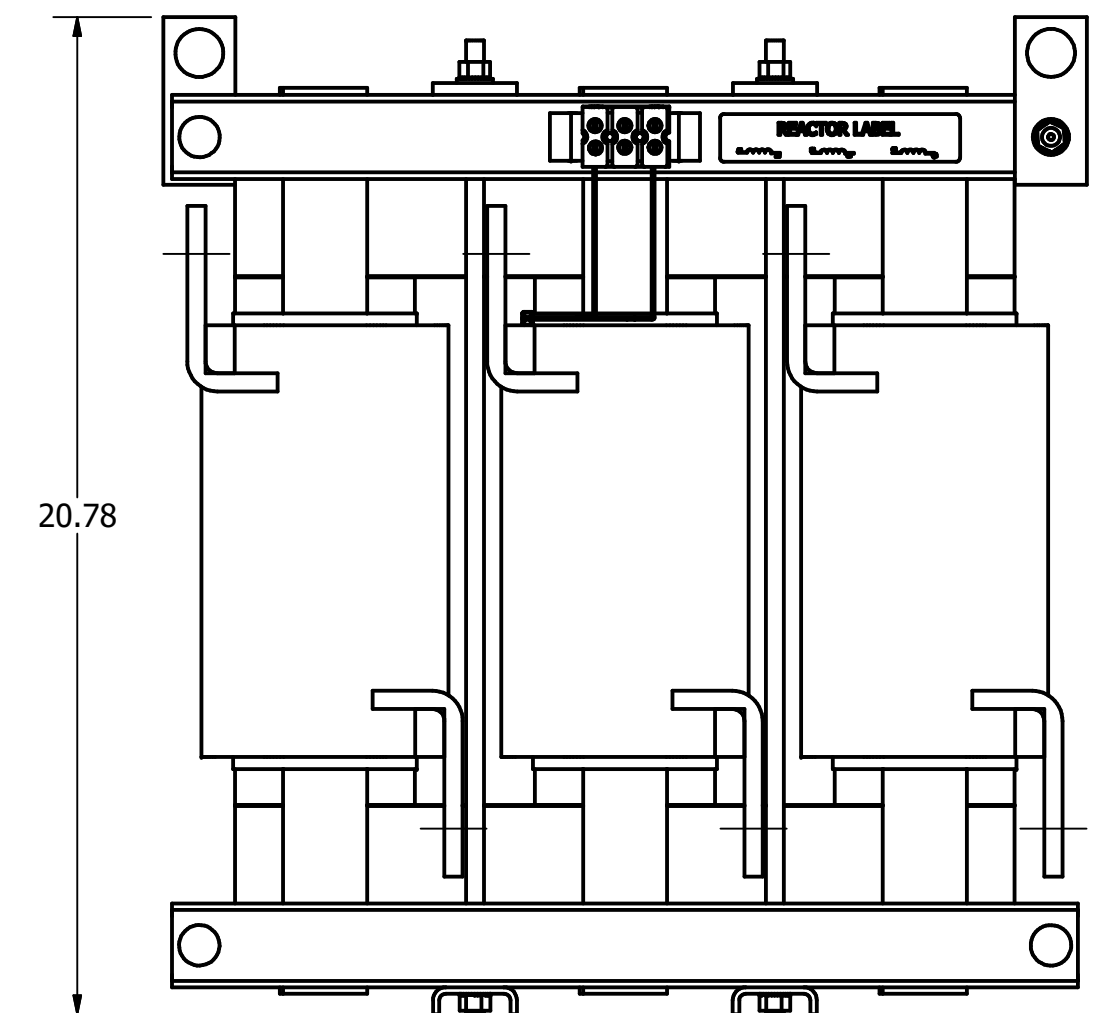
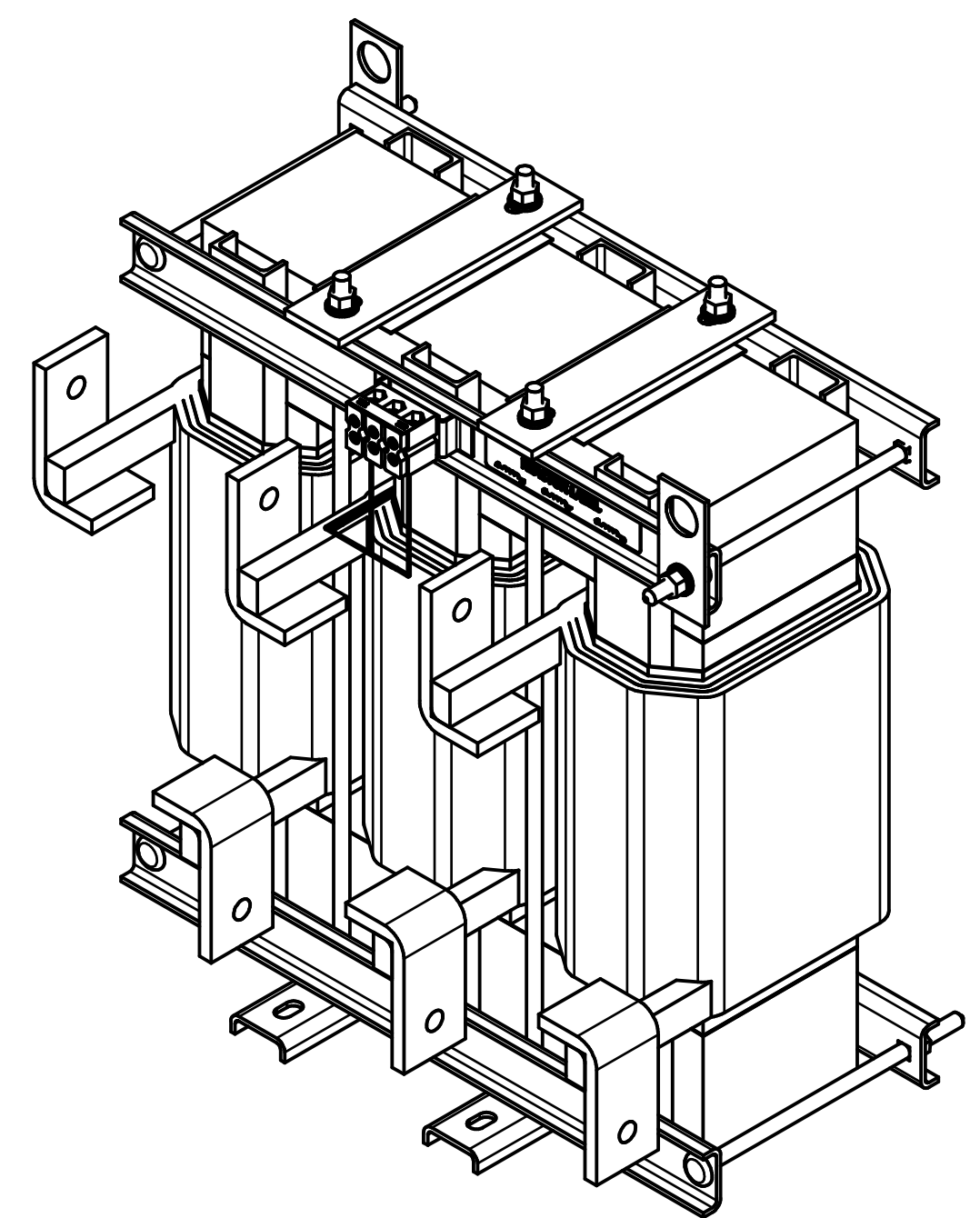
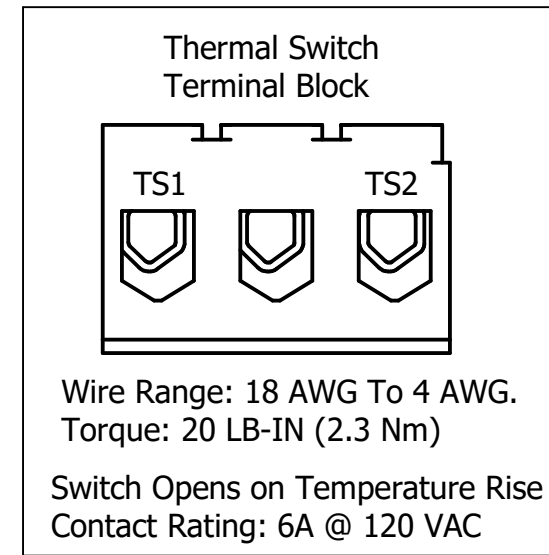
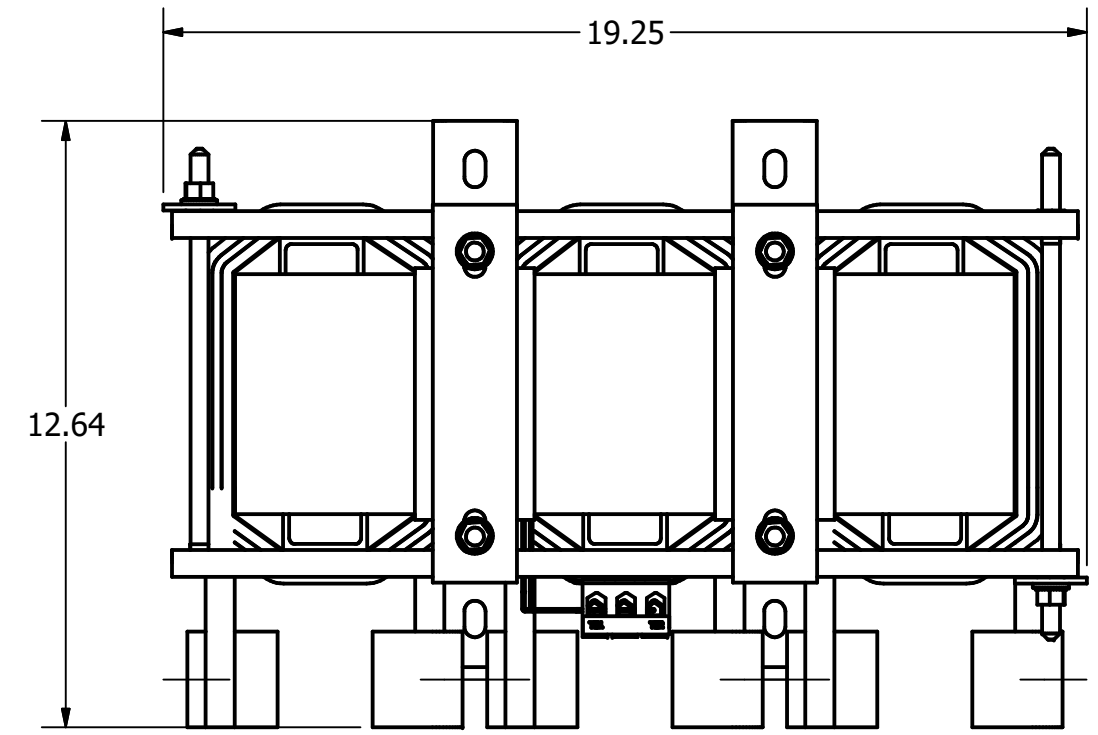
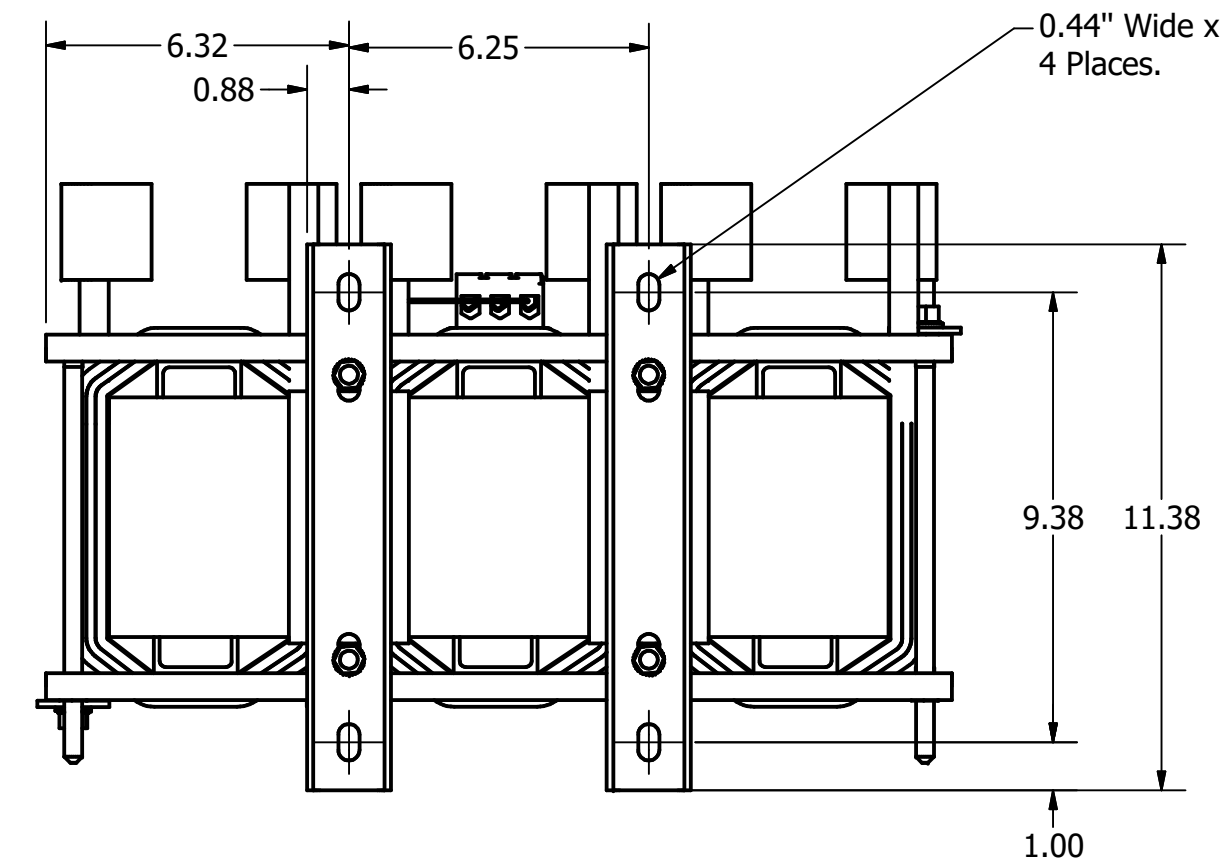
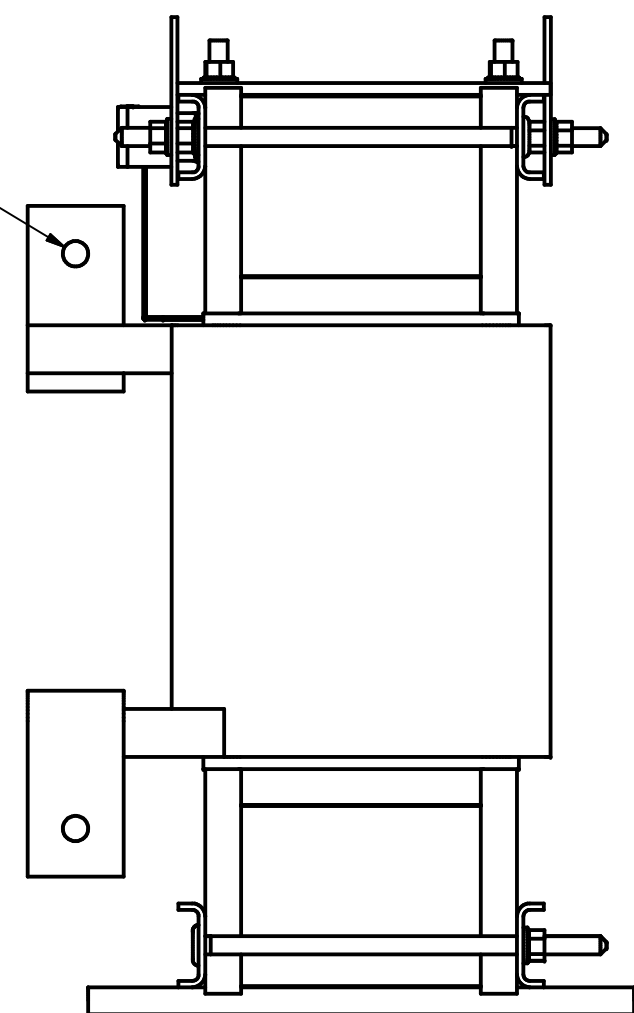


TCI Part Number	Rated Amps (A)	Rated Voltage (V)	Hz	---uH ±5%	Approx Weight (LBS)
KTRMG600AX6	600	600	60	80	465



0.53 Dia Holes
6 Places.



0.44" Wide x 0.75" Long Slots
4 Places.

TCI, LLC
 Germantown, WI
 www.transcoll.com
 800-824-8282

(800) 824-8282 • transcoll.com

KDR Drive Reactor
 KTRMG— (Motor Amps) Or (Rating Amps)
 3 PH, 50/60Hz, 600V Max. —Max.
 40C Amb Max, 155C Rise.

UL, SA, CE

Customer Is Responsible For Installation to Meet All National And Local Electrical Codes.

Material(s) Shall be RoHS Compliant

TCI, LLC CLAIMS PROPRIETARY RIGHTS IN THE MATERIAL HEREIN DISCLOSED. IT IS SUPPLIED WITHOUT PREJUDICE TO ANY PATENT RIGHTS OF TCI AND MAY NOT BE REPRODUCED OR USED TO MANUFACTURE ANYTHING SHOWN THEREIN WITHOUT WRITTEN PERMISSION FROM TCI.				TOLERANCES (EXCEPT AS NOTED) DECIMAL .XX ± .25 .XXX ± .10 FRACTIONAL ± 1/16 ANGULAR ± 1°		W132 N10611 Grant Drive Germantown, WI 53022 KTRMG Y Frame, Copper Bus Reactor Drawing		
A	As Designed	01/29/20	JRN	DRN BY	JRN	DATE	01/29/20	
NO	REVISION	DATE	BY	SCALE	1/4	APRVD:	108097-3DG	
							SIZE	C
							SHT.	1 OF 1