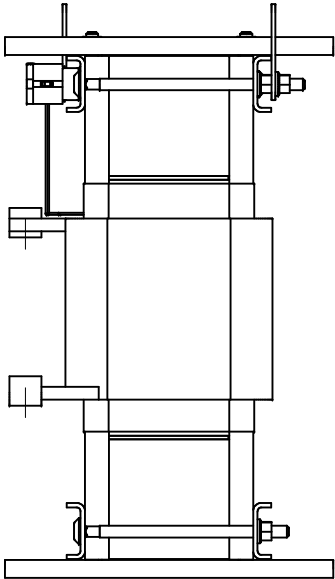
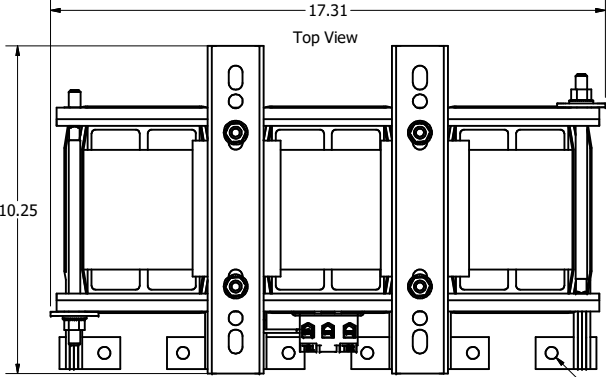
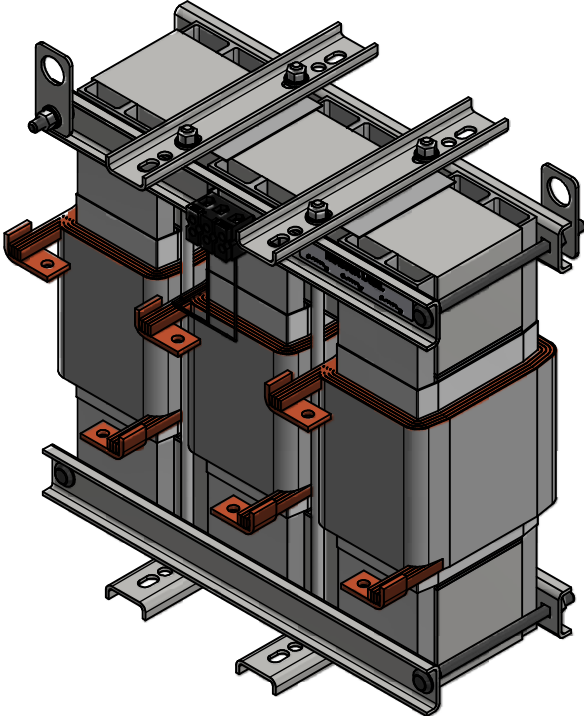
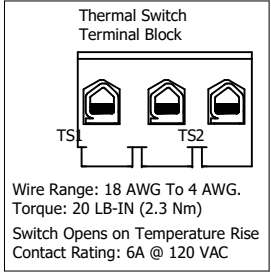
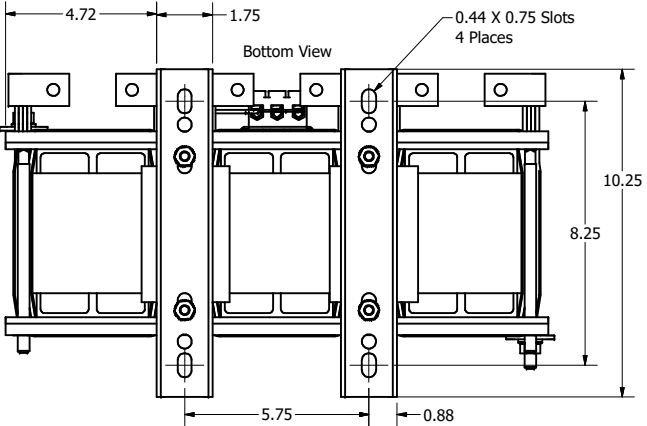
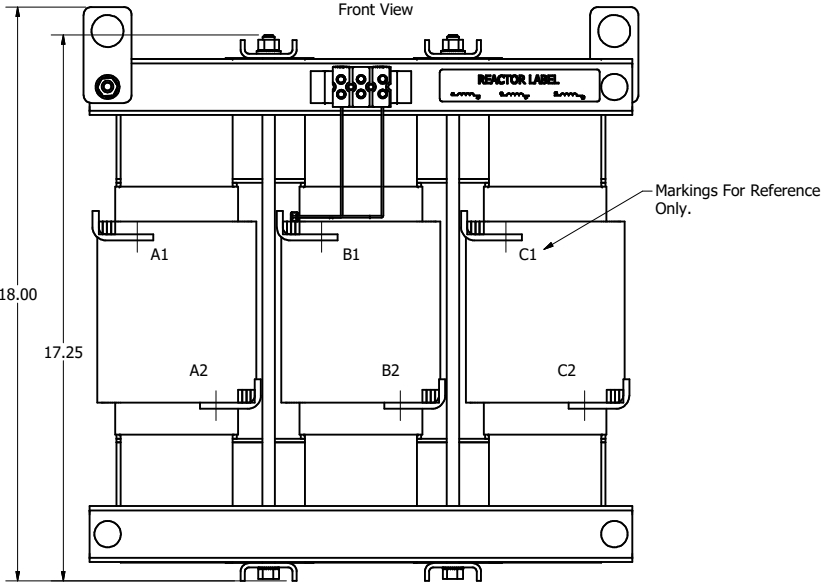


TCI Part Number	Rated Amps (A)	Rated Voltage (V)	Hz	---uH ±5%	Approx Weight (LBS)	Terminal Hole Size (In)
KTRMG200C	200	600	60	299	275	0.375



Side View



**TCI, LLC**  
 Germantown, WI  
 www.transcoil.com  
 800-824-6282

**KDR Drive Reactor**  
 KTRMG--- (Motor Amps) Or (Rating Amps)  
 3 Ph, 50/60Hz, 600V Max. ---Max.  
 40C Amb Max, 150C Rise.

(800) 824-6282 • transcoil.com

Customer Is Responsible For Installation to Meet All National And Local Electrical Codes.

Material(s) Shall be RoHS Compliant

THE INFORMATION AND DESIGNS CONTAINED IN THIS DRAWING ARE CONFIDENTIAL AND THE PROPRIETARY PROPERTY OF ALLIED MOTION TECHNOLOGIES INC. AND ITS SUBSIDIARIES. NEITHER THIS DESIGN NOR ANY INFORMATION CONTAINED IN THIS DRAWING MAY BE REPRODUCED OR DISCLOSED TO OTHERS WITHOUT THE EXPRESS WRITTEN CONSENT OF ALLIED MOTION TECHNOLOGIES INC. AND ITS SUBSIDIARIES.				TOLERANCES (EXCEPT AS NOTED) DECIMAL .XX ± .25 .XXX ± .10		W132N10611 Grant Drive Germantown, WI 53022 © 2021 TCI, LLC An <i>Official Motion Company</i> KTRMG X Frame, Copper Bus Reactor Drawing	
				B 5687, GAP/TERM/CORE LEG 8/11/2021 DSW FRACTIONAL ± 1/32 A As Designed 03/01/21 JRN ANGULAR ± 1° NO REVISION DATE BY ± 1°			