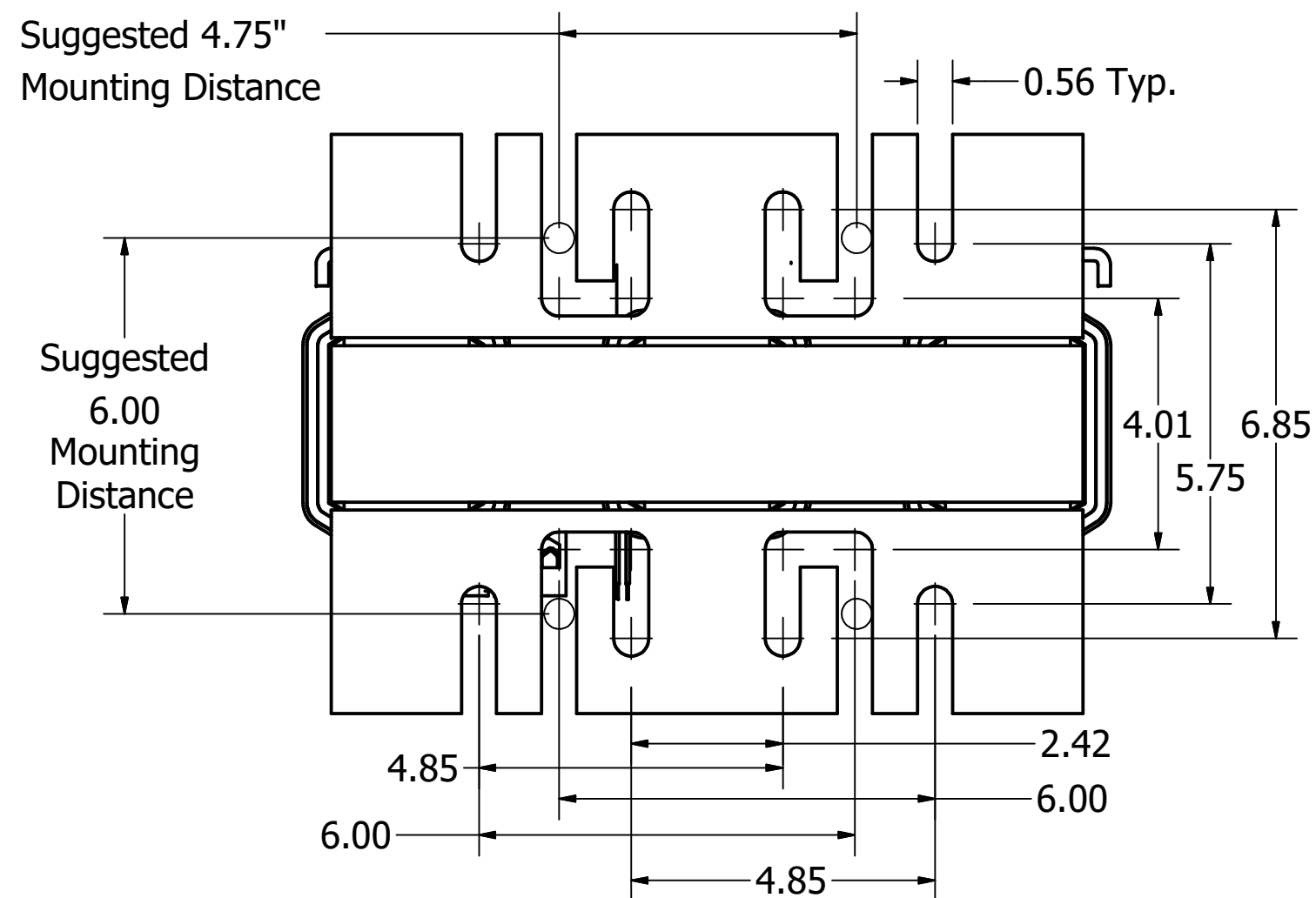
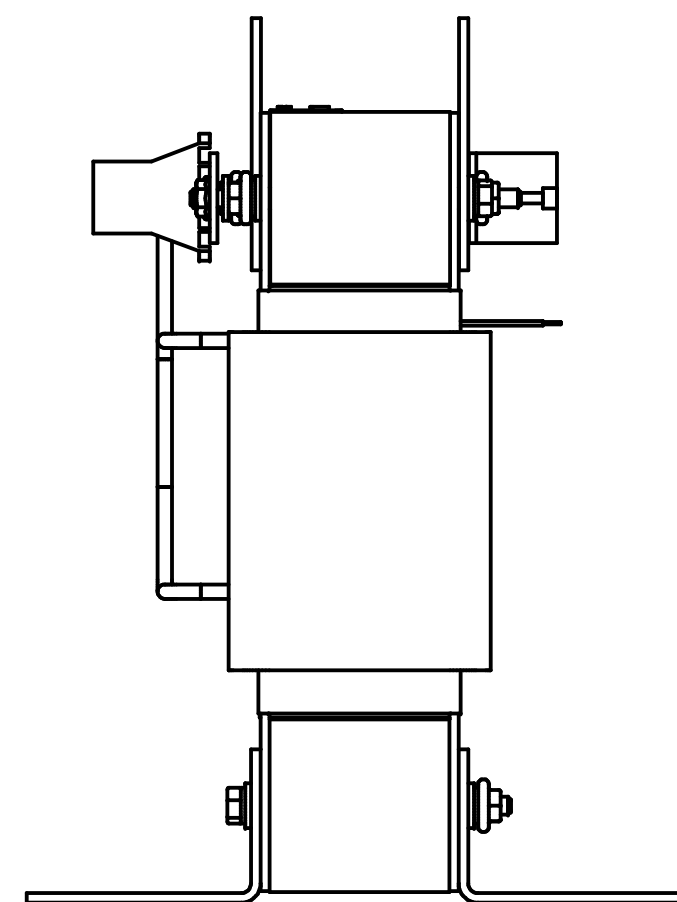
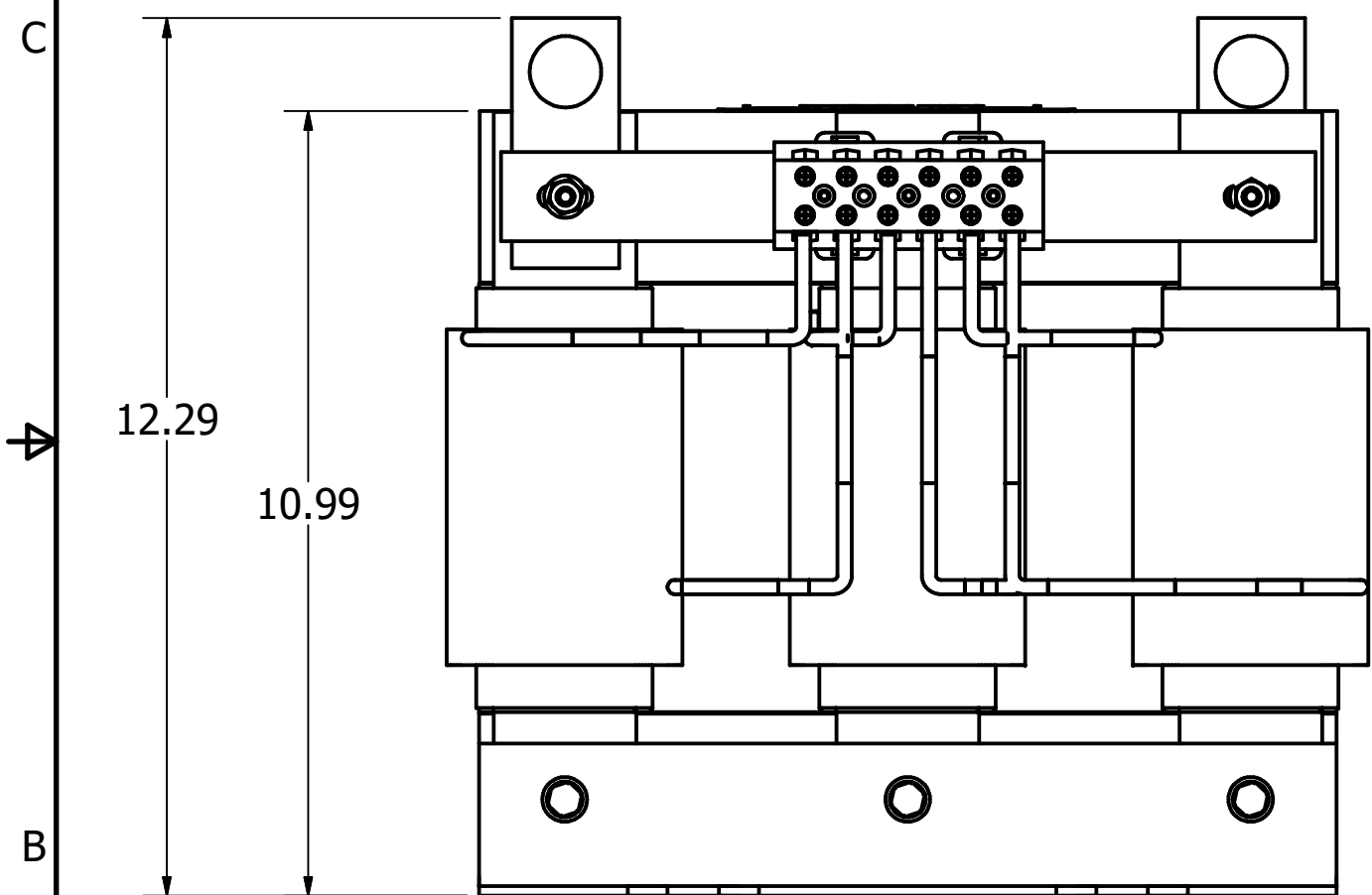
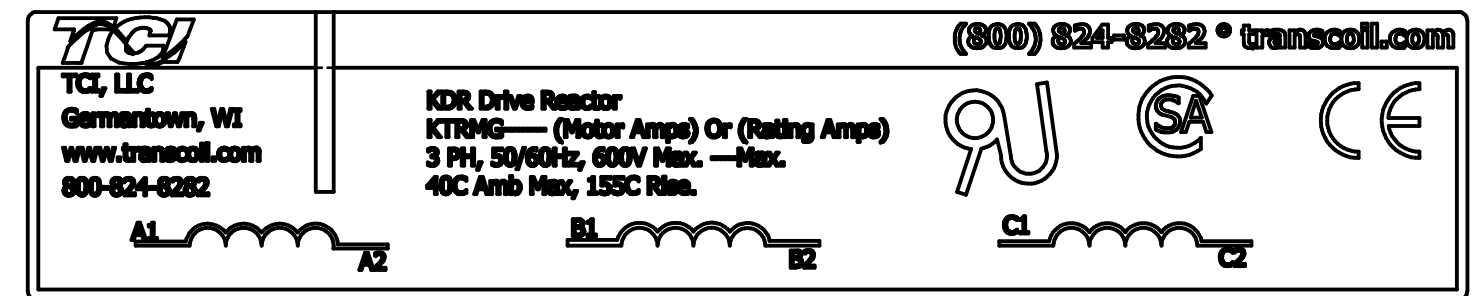


Wire Range: 1- 4 AWG. Torque : 35 LBS-IN (3.95 Nm)  
6- 14 AWG. Torque : 30 LBS-IN (3.39 Nm)  
16- 20 AWG. Torque : 25 LBS-IN (2.28 Nm)  
22 AWG. Torque : 20 LBS-IN (2.26 Nm)

(Customer Connections)  
Markings On Terminal Block  
For Reference Only.

TCI Part Number	Rated Amps (A)	Rated Voltage (V)	Hz	---uH ±5%	Approx Weight (LBS)
KTRMG55C	55	600	60	1090	88



Material(s) Shall be RoHS Compliant

TOLERANCES (EXCEPT AS NOTED)				TCI W132 N10611 Grant Drive Germantown, WI 53022	
DECIMAL				KTRMG L Frame, Terminal Block Reactor Drawing	
.XX ± .03					
.XXX ± .010					
FRACTIONAL				DRN BY: JRN DATE: 07/31/19 108083-1DG	
± 1/32				SCALE: 3/8 APRVD: SIZE: C	
ANGULAR				SHT. 1 OF 1	
± 1°					
A	Drawings Combined, TS Added	07/31/19	JRN		
NO	REVISION	DATE	BY		