

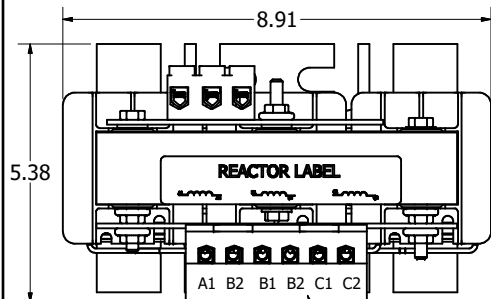
4

3

2

1

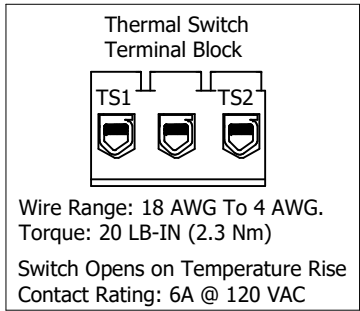
Top View



(Customer Connections)
Markings On Terminal Block
For Reference Only.

Wire Range: 1- 4 AWG. Torque : 35 LBS-IN (3.95 Nm)
6- 14 AWG. Torque : 30 LBS-IN (3.39 Nm)
16- 20 AWG. Torque : 25 LBS-IN (2.28 Nm)
22 AWG. Torque : 20 LBS-IN (2.26 Nm)

C



TCI Part Number	Rated Amps (A)	Rated Voltage (V)	Hz	---uH ±5%	Approx Weight (LBS)
KTRMG28B	30	240	60	8500	25

TCI, LLC
Germantown, WI
www.transcoll.com
800-824-8282

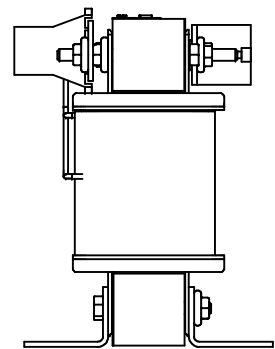
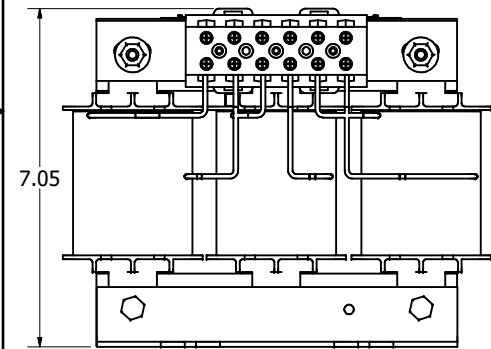
KDR Drive Reactor
KTRMG — (Motor Amps) Or (Rating Amps)
3 PH, 50/60Hz, 600V Max. —Max.
-40C Amb Max, 155C Max.

(800) 824-8282 • transcoll.com

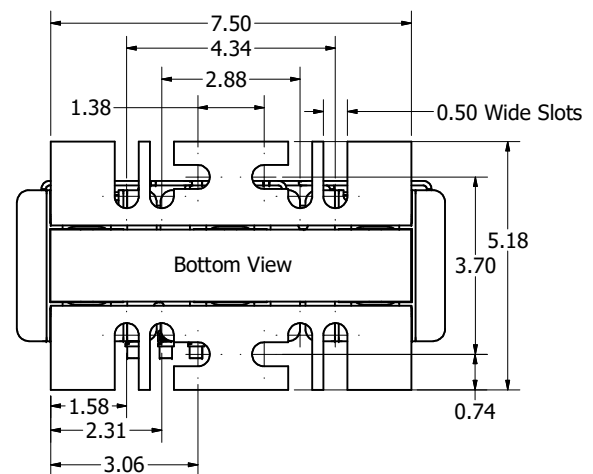
SA CE

A1 A2 B1 B2 C1 C2

Front View



Bottom View



D

B

A

Material(s) Shall be RoHS Compliant

TCI, LLC CLAIMS PROPRIETARY RIGHTS IN THE MATERIAL HEREIN DISCLOSED. IT IS SUPPLIED WITHOUT PREJUDICE TO ANY PATENT RIGHTS OF TCI AND MAY NOT BE REPRODUCED OR USED TO MANUFACTURE ANYTHING SHOWN THEREIN WITHOUT WRITTEN PERMISSION FROM TCI.					TOLERANCES (EXCEPT AS NOTED)	W132 N10611 Grant Drive Germantown, WI 53022	
					DECIMAL		KTRMG F Frame, Terminal Block Reactor Drawing
						FRACTIONAL	
						ANGULAR	
	B	S379, Remove KTRMG23A	9/3/2020	DSW	± 1/16		
	A	Combined Drawings, Added T/S	07/25/19	JRN	± 1°		
	NO	REVISION	DATE	BY			

4

3

2

1