

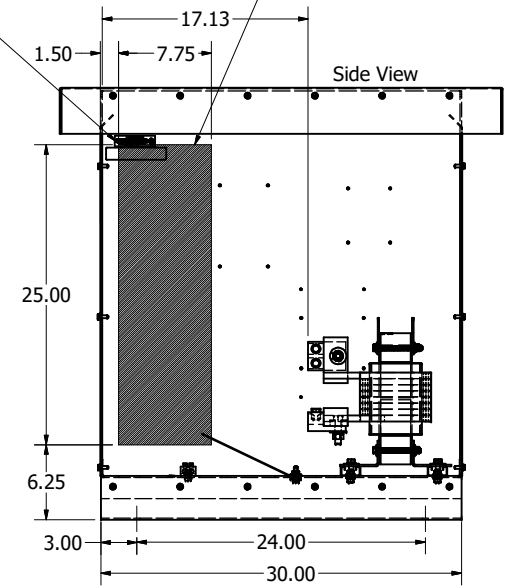
575 Rated Voltage, 600 Max Voltage, Low Z, Impedance.

Part Number	Horsepower (HP)	Motor Amps (A)	Maximum Amps (A)	Inductance (uH)	Weight (LBS)	Losses (W)	Attached Lug Kit
KDRULL42LE3R	600	576	610	39.8	325	716	SLK14

Suggested Customer Wire Entrance Bottom Of Enclosure. See Note: 6 (Non Removeable Panel)

Suggested Customer Entrance Either Side Of Enclosure. See Note: 6 (Non Removeable Panel)

"Product Label and UL Enclosure Label on Inside of Enclosure"



(Customer Connections) Markings On Coils For Reference Only.

Notes:

1. KDR Lug Kits sold separately. Contact TCI.
2. UL file number: cULus Listed File E116124.
3. KDR Drive Inductors Comply With The Thermal and Altitude Standards Set Forth by NEMA ST20-1992.
4. KDR IOM Manual Part Number 30895
5. Material(s) Shall be RoHS Compliant
6. Customer Is Responsible For Installation To Meet All National And Local Electrical Codes.

DIMENSIONS IN INCHES (EXCEPT AS NOTED)		TOLERANCES (EXCEPT AS NOTED)		THE INFORMATION AND DESIGN CONTAINED IN THIS DRAWING ARE CONFIDENTIAL AND THE PROPRIETARY PROPERTY OF ALLIANT INC. AND ITS SUBSIDIARIES. NEITHER THIS DESIGN NOR ANY INFORMATION CONTAINED IN THIS DRAWING MAY BE REPRODUCED OR DISCLOSED TO OTHERS WITHOUT THE EXPRESS WRITTEN CONSENT OF ALLIANT INC. AND ITS SUBSIDIARIES.		DESIGNED BY DSW	DATE 04/25/18	 W132N10611 Grant Drive Germantown, WI 53022 © 2026 Alliant Inc.	
XX ± .25	XXX ± .10	FRAC TIONAL ± 1/32	ANGULAR ± 1°	B 7551	Update Drawing Views	06/23/26	DSW		KDRULL42LE3R Enclosed Type 3R
NO ECO		REVISION		DATE		BY	SCALE	1/5	