

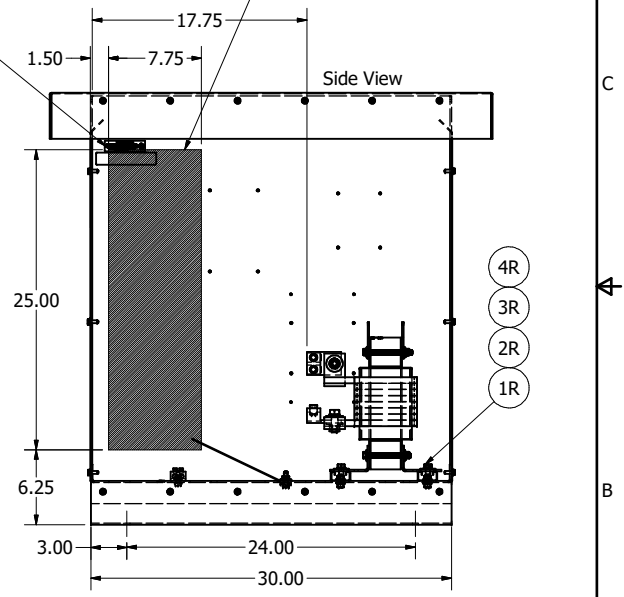
575 Rated Voltage, 600 Max Voltage, Low Z, Impedance.

Part Number	Horsepower (HP)	Motor Amps (A)	Maximum Amps (A)	Inductance (uH)	Weight (LBS)	Losses (W)	Attached Lug Kit
KDRULL45LE3R	500	472	480	62.5	285	587	SLK13

Suggested Customer Wire Entrance Bottom Of Enclosure. See Note: 6 (Non Removeable Panel)

Suggested Customer Entrance Either Side Of Enclosure. See Note: 6 (Non Removeable Panel)

"Product Label and UL Enclosure Label on Inside of Enclosure"



(Customer Connections) Markings On Coils For Reference Only.

- Notes:
1. KDR Lug Kits sold separately. Contact TCI.
 2. UL file number: cULus Listed File E116124.
 3. KDR Drive Inductors Comply With The Thermal and Altitude Standards Set Forth by NEMA ST20-1992.
 4. KDR IOM Manual Part Number 30895
 5. Material(s) Shall be RoHS Compliant
 6. Customer Is Responsible For Installation To Meet All National And Local Electrical Codes.

DIMENSIONS IN INCHES (EXCEPT AS NOTED) TOLERANCES (EXCEPT AS NOTED) DECIMAL .XX ± .25 .XXX ± .10 FRACTIONAL ± 1/32 ANGULAR ± 1°		THE INFORMATION AND DESIGN CONTAINED IN THIS DRAWING ARE CONFIDENTIAL AND THE PROPRIETARY PROPERTY OF ALLIANT INC. AND ITS SUBSIDIARIES. NEITHER THIS DESIGN NOR ANY INFORMATION CONTAINED IN THIS DRAWING MAY BE REPRODUCED OR DISCLOSED TO OTHERS WITHOUT THE EXPRESS WRITTEN CONSENT OF ALLIANT INC. AND ITS SUBSIDIARIES.		DSW	DATE	04/25/18		W132N10611 Grant Drive Germantown, WI 53022 © 2026 Alliant Inc.	
B	7551	Update Drawing Views	06/23/26	DSW	KDRULL45LE3R Enclosed Type 3R				
A		As Designed	04/25/16	DSW	SCALE	1/5	DEN. NO.	107622-14DG	
NO	ECO	REVISION	DATE	BY	1/5		SIZE	C	
								1	SHT. 1 OF 1