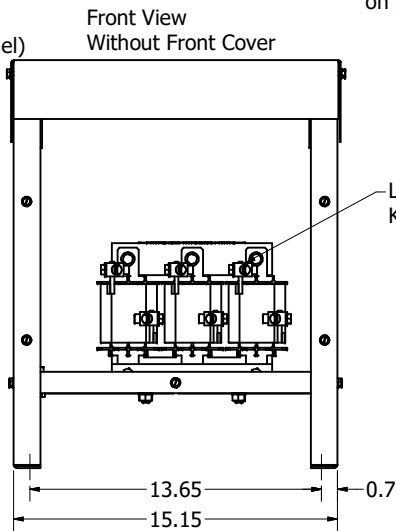
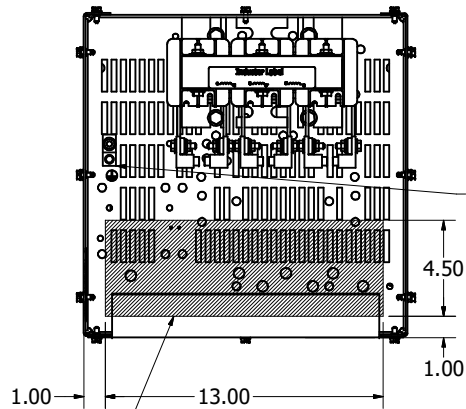
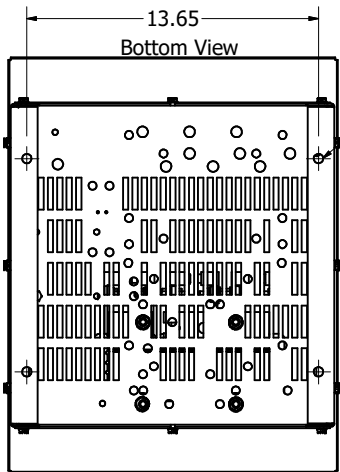
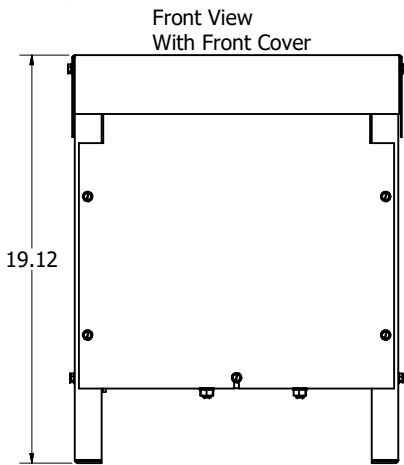
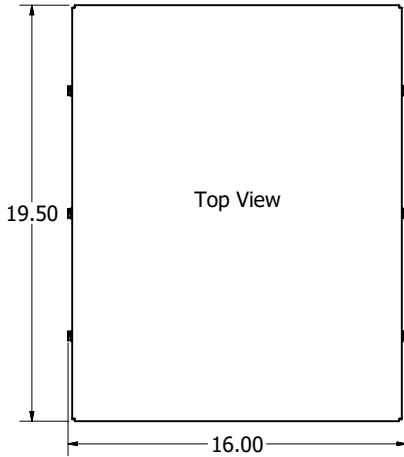


For Electrical Information See: KDRFUL25H, KDRULF26H, KDRULF24L, KDRULF25L, KDULRF3L, KDRFUL45L, KDRULF3P, KDRULF33P.

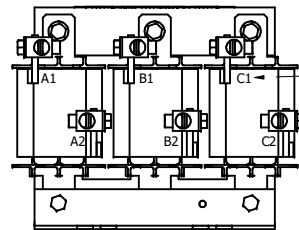
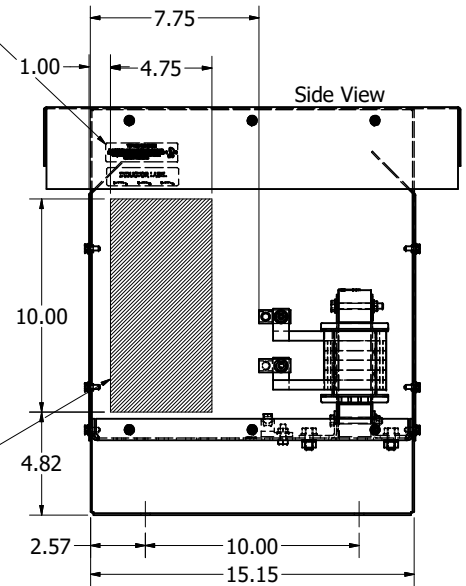


Ground Lug.  
See IOM Manual, Part# 30895  
Table S2/0, Wire Size And Torque.

"Product Label and UL Enclosure Label on Inside of Enclosure"

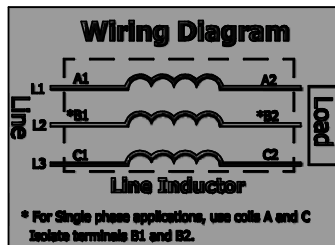
Lug Kits Attached (SLK10), Except for KDRULF26LE3R (Lug Kit SLK21)

Suggested Customer Entrance Either Side Of Enclosure. See Note: 5 (Non Removeable Panel)



Notes:

1. UL file number: cULus Listed File E116124.
2. KDR Drive Inductor Comply With The Thermal and Altitude Standards Set Forth by NEMA ST20-1992.
3. KDR IOM Manual Part Number 30895
4. Material(s) Shall be RoHS Compliant
5. Customer Is Responsible For Installation To Meet All National And Local Electrical Codes.



DIMENSIONS IN INCHES (EXCEPT AS NOTED) TOLERANCES (EXCEPT AS NOTED) DECIMAL: .XX ± .03 .XXX ± .010 FRACTIONAL: 1/32 ANGULAR: ± 1°		THE INFORMATION AND DESIGN CONTAINED IN THIS DRAWING ARE CONFIDENTIAL AND THE PROPRIETARY PROPERTY OF ALLIENT INC. AND ITS SUBSIDIARIES. NEITHER THIS DESIGN NOR ANY INFORMATION CONTAINED IN THIS DRAWING MAY BE REPRODUCED OR DISCLOSED TO OTHERS WITHOUT THE EXPRESS WRITTEN CONSENT OF ALLIENT INC. AND ITS SUBSIDIARIES.		DESIGNED BY: DSW	DATE: 04/23/18		W132N10611 Grant Drive Germantown, WI 53022 © 2026 Allient Inc.
C	7560	Update Title Block	6/22/26	DSW	KDRULF Frame Enclosed Type 3R		
B	6516	Termination Change	12/20/23	DSW			
A		As Designed	04/23/18	DSW			
NO	ECO	REVISION	DATE	BY			
SCALE: 1:4.5				DEN. NO.: 107552-2DG	SIZE: C	SHT. 1 OF 1	