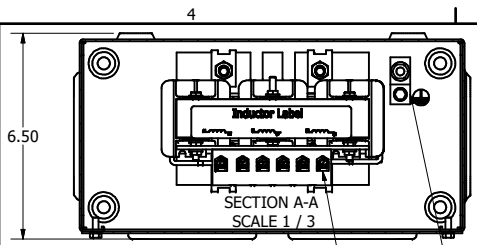
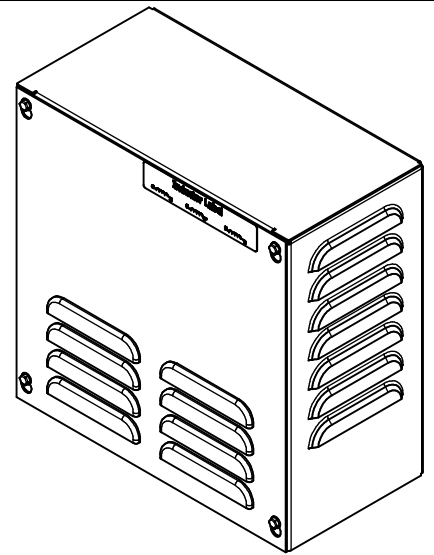
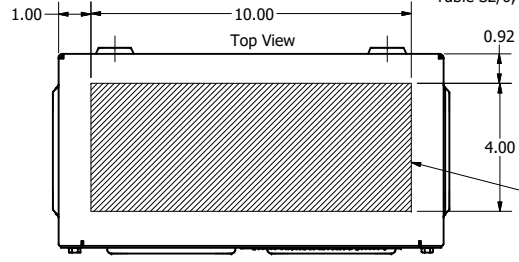


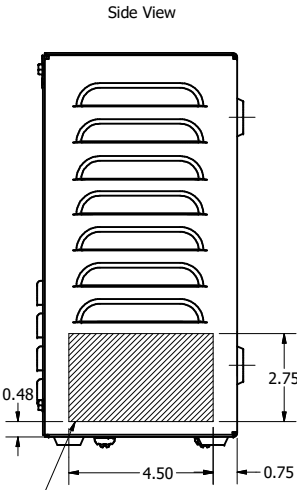
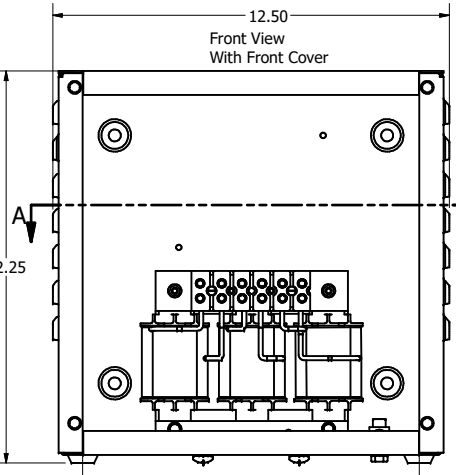
See Website for Electrical Information, Part Numbers Listed Below.
KDRC22HE01, KDRC3HE01, KDRC1HE01, KDRC43HE01
KDRC1PE01, KDRC1LE01, KDRC43LE01, KDRC31PE01



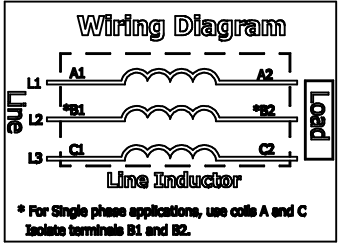
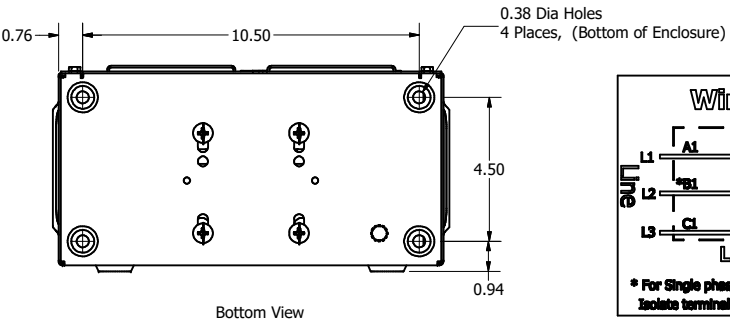
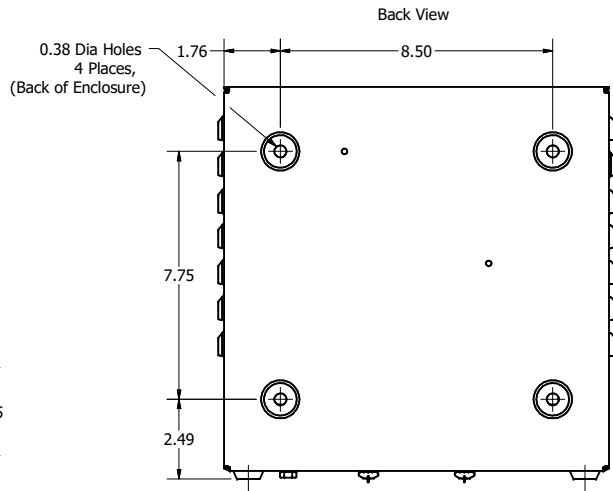
Wire Range: 4-18 AWG.
 Torque : 20 IN-LBS (2.3 Nm)
 Ground Lug.
 See IOM Manual, Part# 30895
 Table S2/0, Wire Size And Torque.



Suggested Customer Wire Entrance
 Top Of Enclosure.
 See Note: 6
 (Non Removeable Panel)



Suggested Customer Entrance
 Either Side Of Enclosure.
 See Note: 6
 (Non Removeable Panel)



- Notes: 1. UL file number: cULus Listed File E116124.
 2. KDR Drive Inductor Comply With The Thermal and Altitude Standards Set Forth by NEMA ST20-1992.
 3. KDR IOM Manual Part Number 30895
 4. NEC Current For 208/240 Volts, Horsepower Based On 208 Volts.
 5. Material(s) Shall be RoHS Compliant
 6. Customer Is Responsible For Installation To Meet All National And Local Electrical Codes.

TOLERANCES (EXCEPT AS NOTED)		THE INFORMATION AND DESIGN CONTAINED IN THIS DRAWING ARE CONFIDENTIAL AND THE PROPRIETARY PROPERTY OF ALLIENT INC. AND ITS SUBSIDIARIES. NEITHER THIS DESIGN NOR ANY INFORMATION CONTAINED IN THIS DRAWING MAY BE REPRODUCED OR DISCLOSED TO OTHERS WITHOUT THE EXPRESS WRITTEN CONSENT OF ALLIENT INC. AND ITS SUBSIDIARIES.		DESIGNED BY		DATE		SCALE		REVISED BY		DATE		DRAWING NO.		SHEET	
DECIMAL	.XX ± .03 .XXX ± .010	D	7427	Removed KDRC44LE01	07/02/2026	MY	03/07/18	DSW	1/3	ECO	REVISION	DATE	BY	1/3	107543DG	C	SHT. 1 OF 1
FRACTIONAL	± 1/32	C		Title Block Updated, 6.75 to 6.50	09/30/2021	DSW											
ANGULAR	± 1°	B	4686	TB Screws changed to 1/8 Hex	05/09/2019	DSW											
KDR C Frame, Enclosed, Type1 With Terminal Block																	

