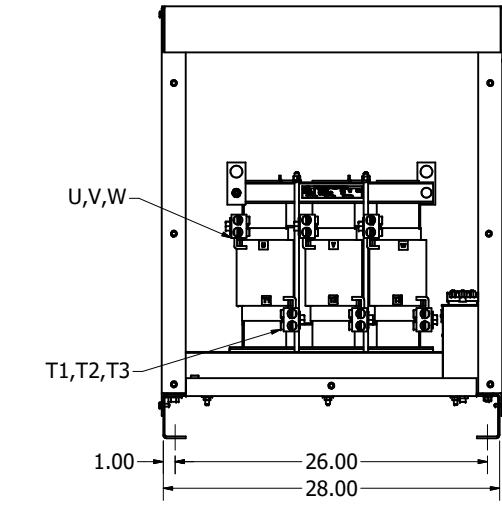
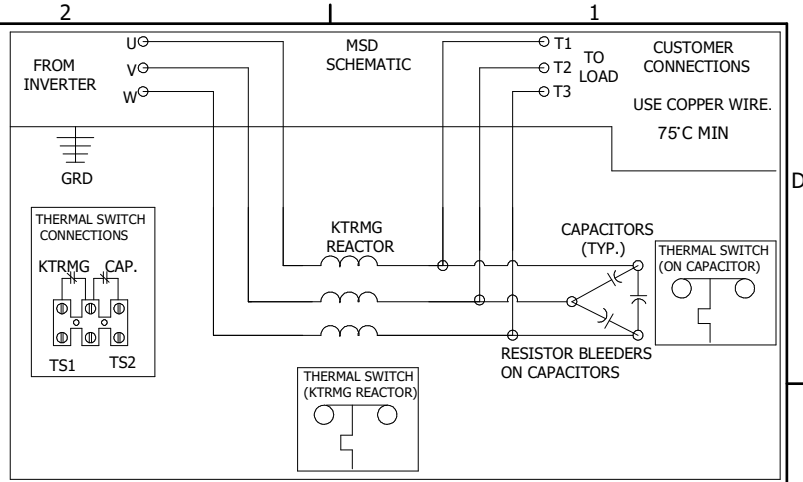
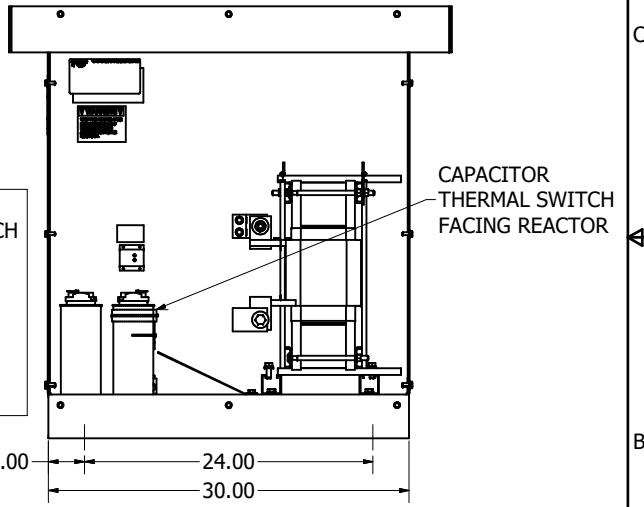
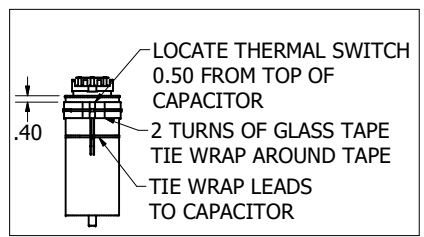


NOTE: REACTOR SIZE SHOWN WILL VARY WITH HORSEPOWER.



NOTE: NUMBER OF CAPACITORS, VARIES WITH HORSEPOWER.



NOTE: FOR TERMINAL TORQUE SEE IOM MANUAL.

MSD PART NUMBER	HP	VOLTAGE	CURRENT	WEIGHT	PRESSURE TERMINAL WIRE RANGE
MSD0200C300	200	600V	200 AMPS	425LBS	(2) 350MCM-6AWG
MSD0250C300	250	600V	250 AMPS	450LBS	(2) 350MCM-6AWG
MSD0305C300	300	600V	305 AMPS	460LBS	(2) 350MCM-6AWG

CUSTOMER IS RESPONSIBLE FOR INSTALLATION TO MEET ALL NATIONAL AND LOCAL ELECTRICAL CODES.

THE INFORMATION AND DESIGNS CONTAINED IN THIS DRAWING ARE CONFIDENTIAL AND THE PROPRIETARY PROPERTY OF ALLIED MOTION TECHNOLOGIES INC. AND ITS SUBSIDIARIES. NEITHER THIS DESIGN NOR ANY INFORMATION CONTAINED IN THIS DRAWING MAY BE REPRODUCED OR DISCLOSED TO OTHERS WITHOUT THE EXPRESS WRITTEN CONSENT OF ALLIED MOTION TECHNOLOGIES INC. AND ITS SUBSIDIARIES.	NO	REVISION	DATE	BY	SCALE: 1:8	TOLERANCES (EXCEPT AS NOTED) DECIMAL .XX ± .03 .XXX ± .010 FRACTIONAL ± 1/32 ANGULAR ± 1°	W132N10611 (Rev 11/16) Germantown, WI 53022 © 2024 TCI, LLC An <i>Official Motors Company</i> MSD 200A to 305A, Sinewave Filter 600V / 3 Phase / 60Hz, Type I / 3R
	NO	REVISION	DATE	BY	SCALE: 1:8	TOLERANCES (EXCEPT AS NOTED) DECIMAL .XX ± .03 .XXX ± .010 FRACTIONAL ± 1/32 ANGULAR ± 1°	W132N10611 (Rev 11/16) Germantown, WI 53022 © 2024 TCI, LLC An <i>Official Motors Company</i> MSD 200A to 305A, Sinewave Filter 600V / 3 Phase / 60Hz, Type I / 3R
	NO	REVISION	DATE	BY	SCALE: 1:8	TOLERANCES (EXCEPT AS NOTED) DECIMAL .XX ± .03 .XXX ± .010 FRACTIONAL ± 1/32 ANGULAR ± 1°	W132N10611 (Rev 11/16) Germantown, WI 53022 © 2024 TCI, LLC An <i>Official Motors Company</i> MSD 200A to 305A, Sinewave Filter 600V / 3 Phase / 60Hz, Type I / 3R
	NO	REVISION	DATE	BY	SCALE: 1:8	TOLERANCES (EXCEPT AS NOTED) DECIMAL .XX ± .03 .XXX ± .010 FRACTIONAL ± 1/32 ANGULAR ± 1°	W132N10611 (Rev 11/16) Germantown, WI 53022 © 2024 TCI, LLC An <i>Official Motors Company</i> MSD 200A to 305A, Sinewave Filter 600V / 3 Phase / 60Hz, Type I / 3R