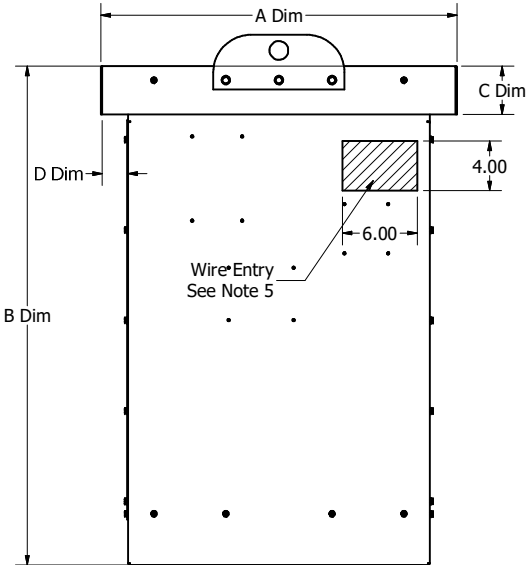


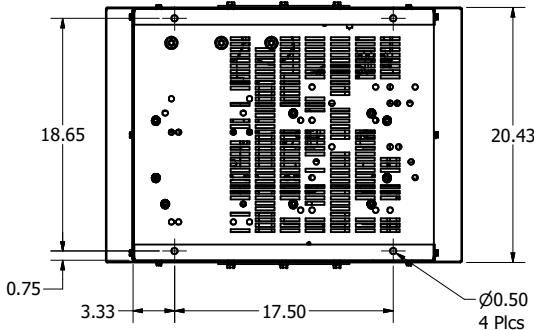
Power (HP)	Voltage (V)	Phase	Frequency (Hz)	Harmonic	Contactor	PQconnect	Weight (lb)	Terminal Hole Size
125	480 & 600	3	60	5TH	Without	Without	300	0.38 In
125	480 & 600	3	60	5TH	With	Without	305	0.38 In
125	480 & 600	3	60	5TH	With	With	315	0.38 In
150	480 & 600	3	60	5TH	Without	Without	346	0.44 In
150	480 & 600	3	60	5TH	With	Without	350	0.44 In
150	480 & 600	3	60	5TH	With	With	360	0.44 In

- NOTES:
1. Refer to manual for wire size and torque.
 2. Contactor (CNT) and Terminal Block (TB) are optional.
 3. PQconnect with Transformer is optional.
 4. Refer to schematic #30047, refer to #30047-PQ for PQconnect Schematic.
 5. Preferred wire entry area.
 6. Wire entry is allowed through the bottom.
 7. Enclosure is shown with a Type 3R top.
 8. Use only hubs or fittings that comply with UL514B for Type 3R applications.
 9. Installation must meet all national and local codes.
 10. Number, size & location can vary per HP and voltage.

Dimension Table				
Enclosure	"A" Dim	"B" Dim	"C" Dim	"D" Dim
Type 1	26.5	40.4	2.0	1.1
Type 3R	28.5	40.0	3.9	2.1

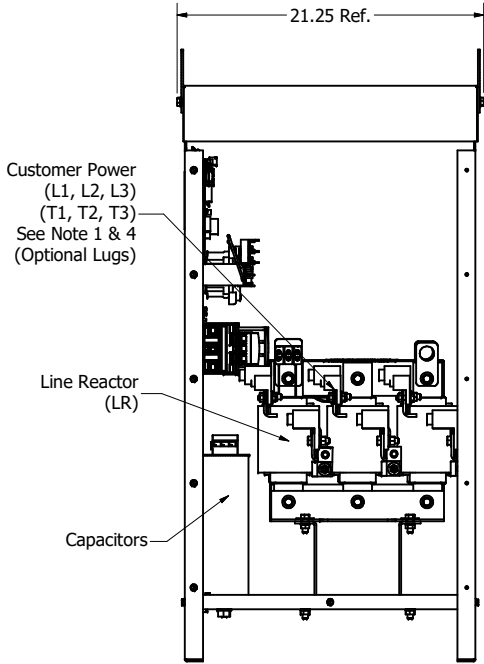
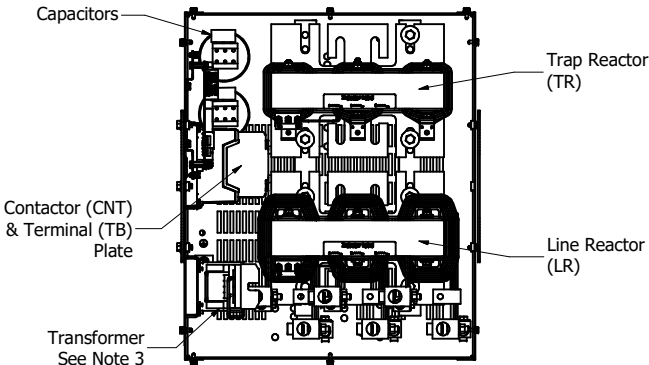


Side View

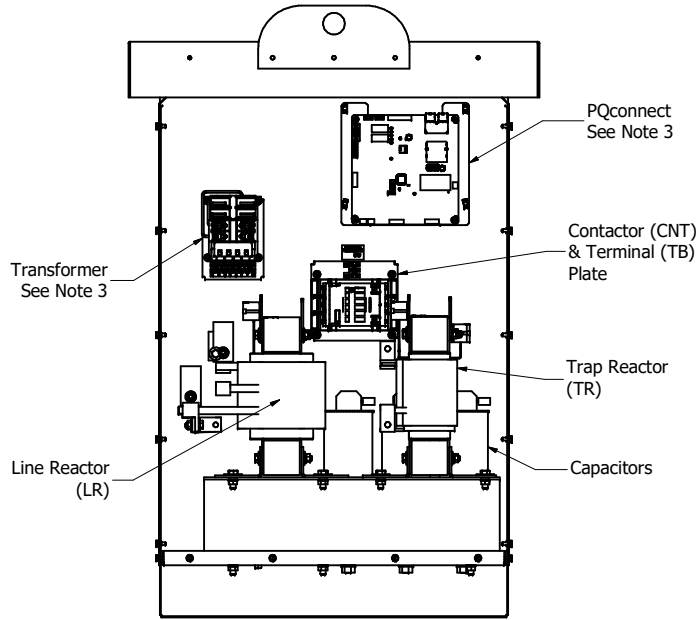


Bottom View
With Mounting Dimensions


Component Layout



Front View
With Front Cover Removed



Right View
With Side Panel Removed

THE INFORMATION AND DESIGNS CONTAINED IN THIS DRAWING ARE CONFIDENTIAL AND THE PROPRIETARY PROPERTY OF ALLIED MOTION TECHNOLOGIES INC. AND ITS SUBSIDIARIES. NEITHER THIS DESIGN NOR ANY INFORMATION CONTAINED IN THIS DRAWING MAY BE REPRODUCED OR DISCLOSED TO OTHERS WITHOUT THE EXPRESS WRITTEN CONSENT OF ALLIED MOTION TECHNOLOGIES INC. AND ITS SUBSIDIARIES.				TOLERANCES (EXCEPT AS NOTED)		 W132N10611 (Rev. 11/16) Germantown, WI 53022 © 2023 TCI, LLC
				DECIMAL		
D	6356, HSL annexation	2/21/23	JSG	.XX	± .25	An Allied Motion Company HarmonicShield 480V & 600V, 125HP & 150HP
C	Add PQconnect	7/27/2021	DSW	.XXX	± .10	
B	Add Type 1 & 600 Volt	5/26/17	RHW	FRACTIONAL	± 1/16	DWN BY: DSW SCALE: .125 DATE: 6/23/16 DESIGNED BY: C
A	As Designed	6/23/16	DSW	ANGULAR	± 1°	
NO	REVISION	DATE	BY			106289DG