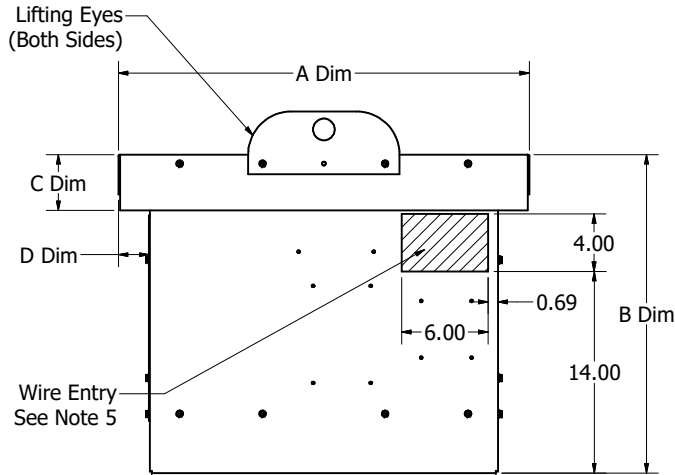
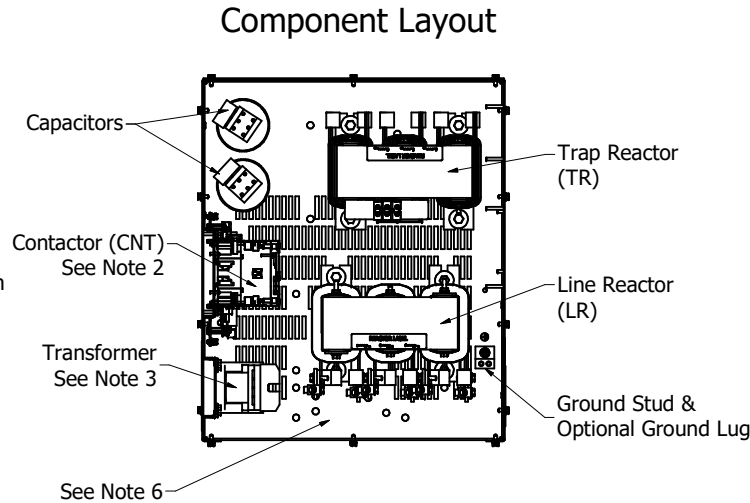


Dimension Table				
Enclosure	"A" Dim	"B" Dim	"C" Dim	"D" Dim
Type 1	26.5	23.0	2.0	1.2
Type 3R	28.5	22.1	3.9	2.1

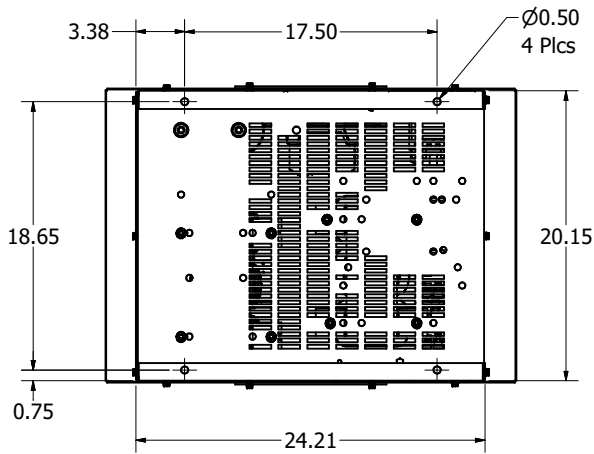
Power (HP)	HSD / HSL	Voltage (V)	Phase	Frequency (Hz)	Harmonic	Contactor	Weight (lb)	Terminal Hole Size (In)
100	HSD / HSL	480 & 600	3	60	5TH	Without	235	0.38
100	HSD / HSL	480 & 600	3	60	5TH	With	238	0.38



Left Side View

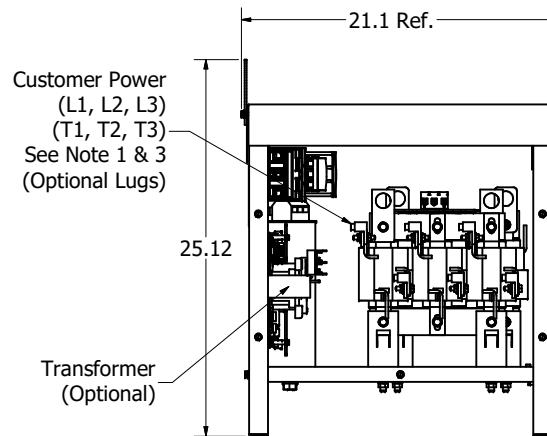


Component Layout



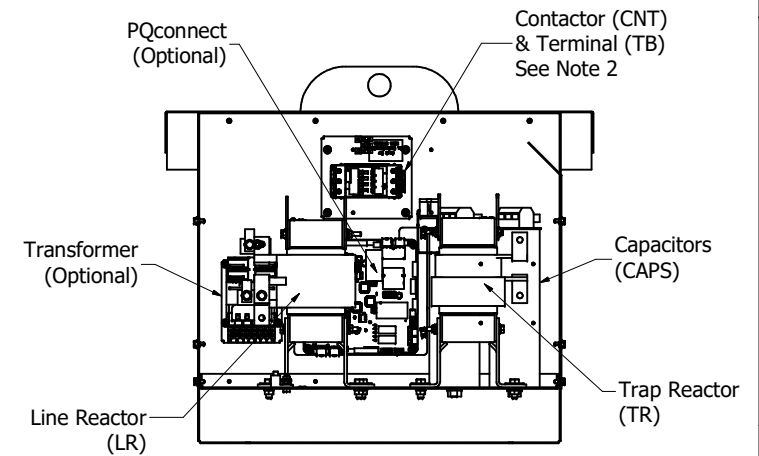
Bottom View

With Mounting Dimensions



Front View

With Front Cover Removed



Right View

With Right Panel Removed

Notes:

1. Refer to manual for wire size and torque.
2. Contactor (CNT) and Terminal (TB) are optional.
3. PQconnect with Transformer is optional.
4. Refer to schematic # 30047.
5. Preferred wire entry area.
6. Wire entry is allowed through the bottom.
7. Enclosure is shown with a Type 3R top.
8. Use only hubs or fittings that comply with UL514B for Type 3R applications.
9. Installation must meet all national and local codes.

THE INFORMATION AND DESIGNS CONTAINED IN THIS DRAWING ARE CONFIDENTIAL AND THE PROPRIETARY PROPERTY OF ALLIED MOTION TECHNOLOGIES INC. AND ITS SUBSIDIARIES. NEITHER THIS DESIGN NOR ANY INFORMATION CONTAINED IN THIS DRAWING MAY BE REPRODUCED OR DISCLOSED TO OTHERS WITHOUT THE EXPRESS WRITTEN CONSENT OF ALLIED MOTION TECHNOLOGIES INC. AND ITS SUBSIDIARIES.

NO	REVISION	DATE	BY
D	6491 Relocated wall components	11/17/23	JSG
C	6356, HSL annexation	4/17/23	JSG
B	Add Type 1 & 600 Volt	5/25/17	RHW
A	As Designed	6/20/16	RHW

TOLERANCES (EXCEPT AS NOTED)
DECIMAL
.XX ± .03
.XXX ± .010
FRACTIONAL
± 1/32
ANGULAR
± 1°

<b>TCI</b>		W132N10611 (Rev 1) 50022
An Allied Motion Company		© 2023 TCI, LLC
HarmonicShield		
480V & 600V, 100HP		
DRN BY: DSW	DATE: 6/20/16	106284DG
SCALE: 1:5	DRW: C	SHT 1 OF 1