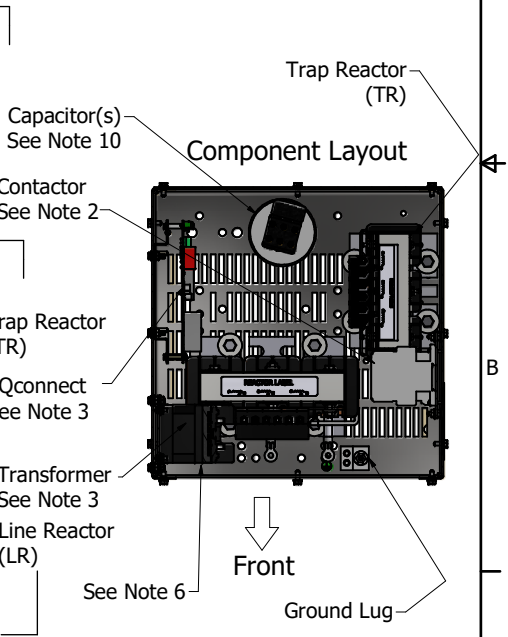
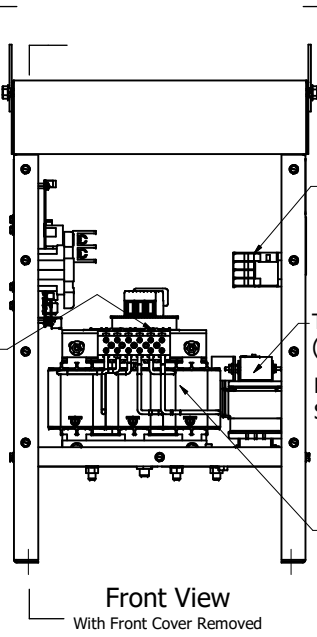
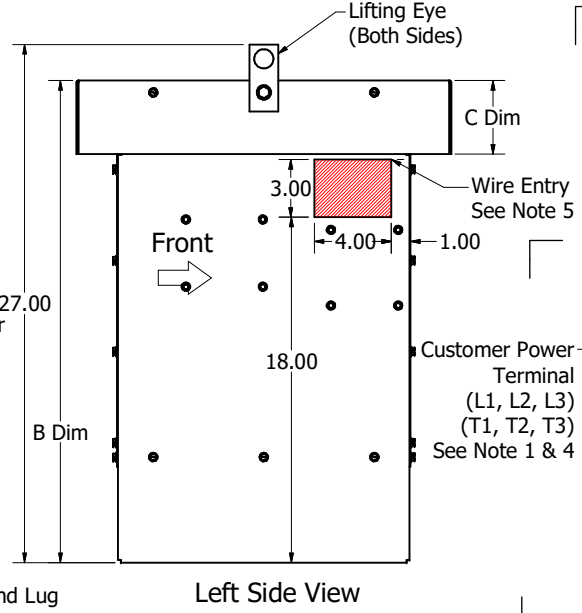
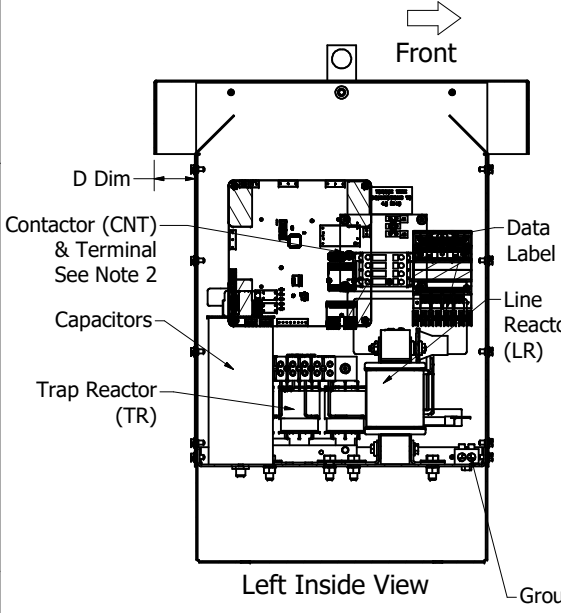



HP	Volts	Phase	Hz	Harmonic	Kvar	Contactor	PQ Connect	Weight (lbs)
15	480	3	60	5TH	5	Without	Without	85
15	480	3	60	5TH	5	With	Without	88
15	480	3	60	5TH	5	With	With	97
15	600	3	60	5TH	5	Without	Without	85
15	600	3	60	5TH	5	With	Without	88
15	600	3	60	5TH	5	With	With	97
20	480	3	60	5TH	6	Without	Without	90
20	480	3	60	5TH	6	With	Without	93
20	480	3	60	5TH	6	With	With	102
20	600	3	60	5TH	6	Without	Without	90
20	600	3	60	5TH	6	With	Without	93
20	600	3	60	5TH	6	With	With	102
25	480	3	60	5TH	8	Without	Without	93
25	480	3	60	5TH	8	With	Without	95
25	480	3	60	5TH	8	With	With	104

Enclosure	"A" Dim	"B" Dim	"C" Dim	"D" Dim
Type 1	16.8	25.6	1.8	0.8
Type 3R	19.5	25.1	3.8	2.1



- Notes:
- 1.) Refer to manual for wire size and torque.
 - 2.) Contactor (CNT) and terminal (TB) are optional.
 - 3.) PQconnect with Transformer are optional.
 - 4.) Refer to schematic # 30047, PQ Schematic (TBD)
 - 5.) Preferred wire entry area.
 - 6.) Wire entry is allowed through the bottom.
 - 7.) Enclosure is shown with a Type 3R top.
 - 8.) Use only hubs or fittings that comply with UL514B for Type 3R applications
 - 9.) Installation must meet all national and local codes.
 - 10.) Number, size & location can vary per Hp and voltage.

THE INFORMATION AND DESIGNS CONTAINED IN THIS DRAWING ARE CONFIDENTIAL AND THE PROPRIETARY PROPERTY OF ALLIED MOTION TECHNOLOGIES INC. AND ITS SUBSIDIARIES. NEITHER THIS DESIGN NOR ANY INFORMATION CONTAINED IN THIS DRAWING MAY BE REPRODUCED OR DISCLOSED TO OTHERS WITHOUT THE EXPRESS WRITTEN CONSENT OF ALLIED MOTION TECHNOLOGIES INC. AND ITS SUBSIDIARIES.				TOLERANCES (EXCEPT AS NOTED) DECIMAL .XX ± .25 .XXX ± .10		 W132N10611 Grant Drive Germantown, WI 53022 © 2021 TCI, LLC	
C	Add PQConnect	7/26/2021	DSW	FRACTIONAL ± 1/16		HarmonicShield 15 to 25Hp / 480V, 15 & 20Hp / 600V	
B	Add Type 1 & 600 Volt	5/19/17	RHW	ANGULAR ± 1°		DWN BY: DSW DATE: 6/17/16 SCALE: 1/5 DRAWN: CSE	
A	As Designed	6/17/16	DSW	REVISION		106268DG	
NO				DATE		SHT 1 OF 1	

Material(s) Shall be RoHS Compliant