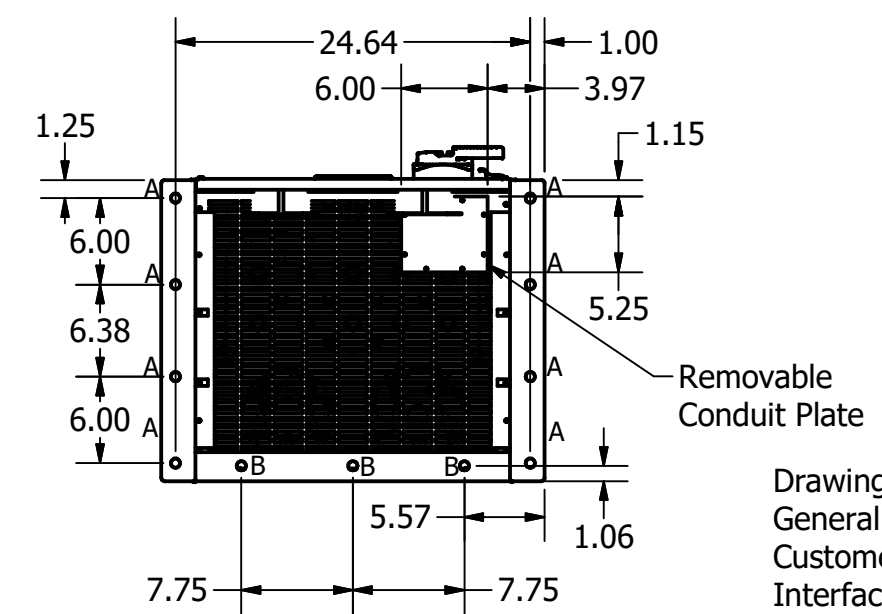
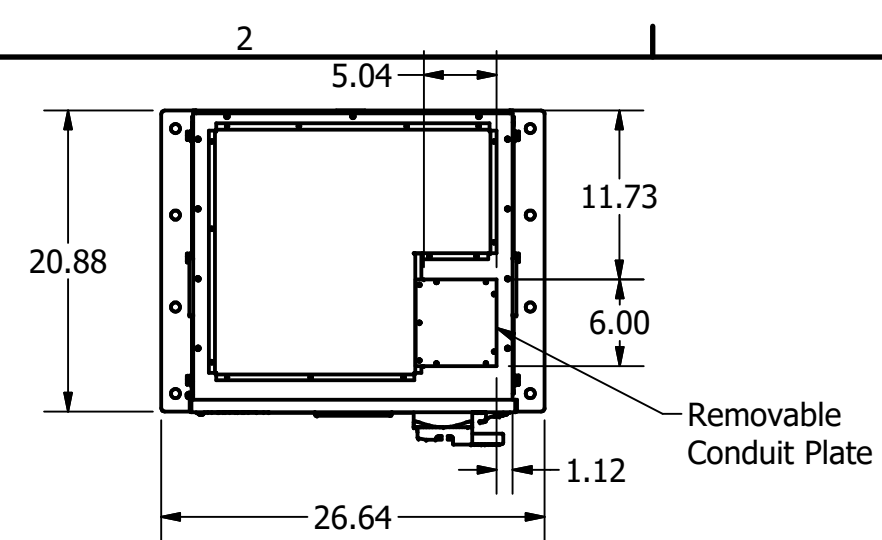


WARNING: Filter must be securely anchored to the floor to avoid a tipping hazard.



- Notes:
- 1) Mounting hole diameter is .64 inches
 - 2) The "A" mounting holes are mandatory. The "B" holes are optional.
 - 3) to insure proper cooling maintain 6 inch clearance on sides and front.

The 200A unit is rated for 150A when applied with a 480V/600V autotransformer.


The 250A unit is rated for 185A when applied with a 480V/600V autotransformer.

Drawings:
General Schematic: #29853
Customer Connection: #25027-3
Interface/Display Module: #28283-1
Current Transformer: #26461
Pedestal Assy Drawing: #29770

Weights lbs (Kg):
Filter/Enclosure: 685 (311 Kg)
Pedestal: 50 (23 Kg)

Total Heat Loss:
200A: 7000 watts, 23,885 Btu/hr
250A: 8750 watts, 29,856 Btu/hr

For TCI Catalog #HGAF01F1

G	Compact HMI upgrade	10/15/20	MJS	TOLERANCES (EXCEPT AS NOTED)	 W132 N10611 Grant Drive Germantown, WI 53022
F	updated weight to match wall mount	2/6/20	MJS	DECIMAL	
E	added 600V rating notes	12/17/18	MJS	.XX ± .05 .XXX ± .025	
D	added pedestal info	12/4/17	MJS	FRACTIONAL	
C	3744 ADDED 200A INFO	9/23/16	MJS	± 1/32	
B	FRONT VIEW MISSING HOOD	8/16/16	MJS	ANGULAR	Outline, Installation, 200A/250A Active Filter, N1, Floor Mount
NO	REVISION	DATE	BY	± 1°	
DRN. BY: MJS SCALE: yes					DATE: 11/17/15 APRVD:
					106183 SIZE: B
					SHT.1 OF 1