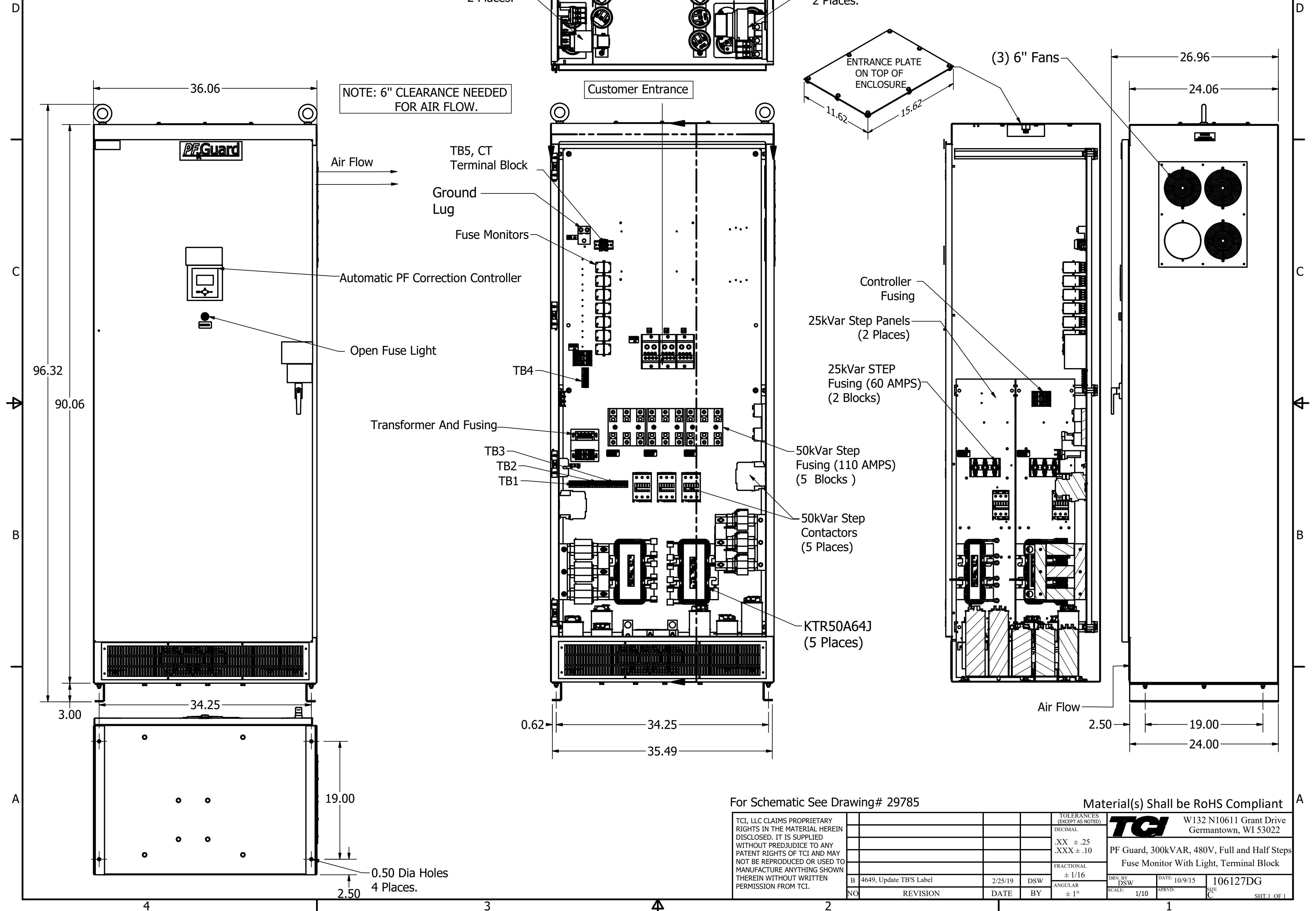


PFCA0300AW1C021C
 300kVar, 7 Steps
 (5-50kVar), (2-25kVar), 480V
 APPROX WEIGHT: 1205LBS

Customer Input Connection
 (500MCM-4 AWG Wire Range)
 And Ground Connection.
 (350MCM-6 AWG Wire Range)
 See IOM Manual
 For Torque Information



For Schematic See Drawing# 29785

Material(s) Shall be RoHS Compliant

TCI, LLC CLAIMS PROPRIETARY RIGHTS IN THE MATERIAL HEREIN DISCLOSED. IT IS SUPPLIED WITHOUT PREJUDICE TO ANY PATENT RIGHTS OF TCI AND MAY NOT BE REPRODUCED OR USED TO MANUFACTURE ANYTHING SHOWN THEREIN WITHOUT WRITTEN PERMISSION FROM TCI.				TOLERANCES (EXCEPT AS NOTED)	TCI W132 N10611 Grant Drive Germantown, WI 53022 PF Guard, 300kVAR, 480V, Full and Half Steps Fuse Monitor With Light, Terminal Block
				DECIMAL	
				.XX ± .25 .XXX ± .10	
				FRACTIONAL ± 1/16	
	B 4649, Update TB'S Label	2/25/19	DSW	ANGULAR ± 1°	DRN BY: DSW SCALE: 1/10 DATE: 10/9/15 APRVD: [Signature] SIZE: C 106127DG SHT 1 OF 1