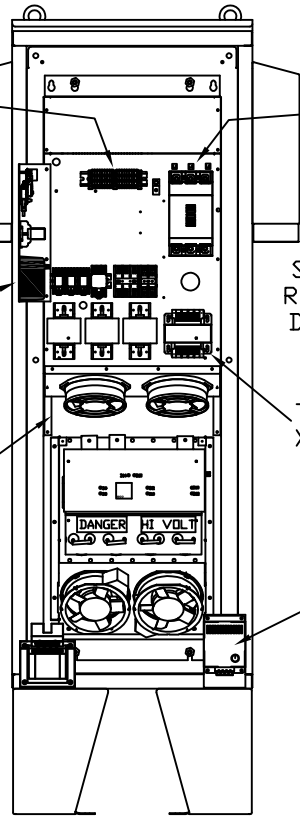


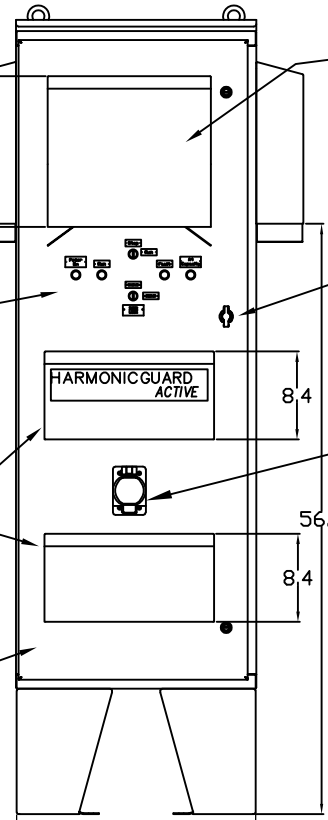
Internal View



Terminals TB1 & TB2
 Input Power
 Enclosure Thermostat Set @ 90°F
 H5 Chassis

Status Lights, Run Key Switch, Door Interlock Key Switch
 T1 Control XFMR
 Cooling Fans Air Inlets
 Enclosure Heater Set @ 40°F
 Hinged Door

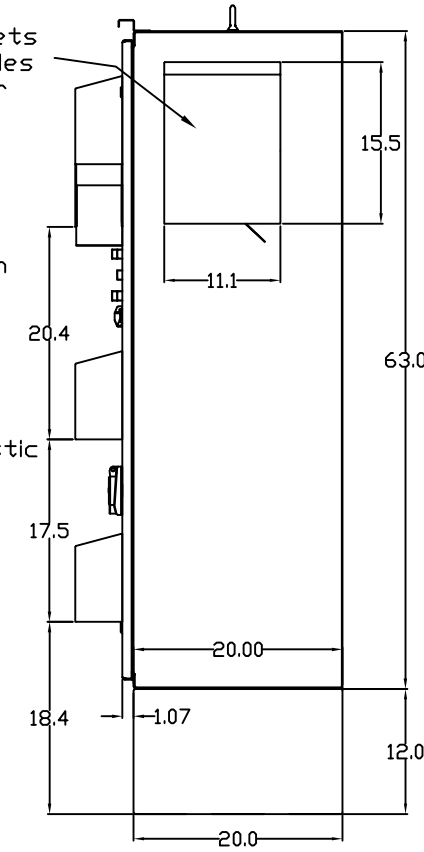
Front View



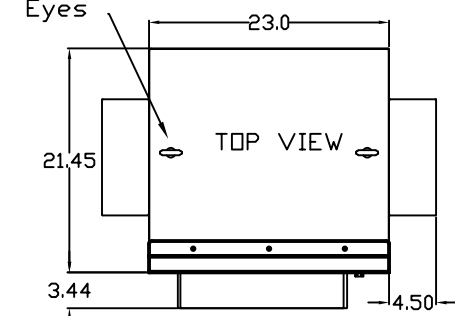
Air Outlets Both Sides & Door
 1/4 Turn Latches
 HMI Diagnostic Port

12.00 Minimum Air Flow Clearance

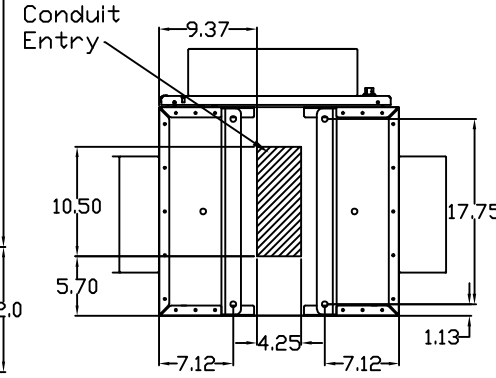
Side View



Top View



Bottom View



Size	Watt Loss	Btu/h
50 Amp	3,050	10,407
100 Amp	3,850	13,137

Drawings:

General Schematic: 28359
 Customer Connection #25027-3
 Current Transformer #26461
 Remote HMI Drawing #28283-1

Notes:
 Weight lbs (Kg) 685.3 (310.9)
 Dimensions are in Inches
 Finish: ANSI-61 Gray

The 50A unit is rated for 39A when applied with a 480V/600V autotransformer
 The 100A unit is rated for 78A when applied with a 480V/600V autotransformer

TCI, LLC CLAIMS PROPRIETARY RIGHTS IN THE MATERIAL HEREIN DISCLOSED. IT IS SUPPLIED WITHOUT PREDJUDICE TO ANY PATENT RIGHTS OF TCI AND MAY NOT BE REPRODUCED OR USED TO MANUFACTURE ANYTHING SHOWN THEREIN WITHOUT WRITTEN PERMISSION FROM TCI.

NO	REVISION	DATE	BY
G	5641 Clearance note modified	6/22/21	JSG
F	Floor stand kit modified	4/15/21	JSG
E	watt loss update	9/16/20	MJS
D	added 600V notes	12/12/18	MJS
C	Update Notes	1/26/16	RHW
B	noted T1 xfmr location	6/11/15	MJS

TOLERANCES (EXCEPT AS NOTED)
DECIMAL
.XX ± .050
.XXX ± .025
FRACTIONAL ± 1/32
ANGULAR ± 1°

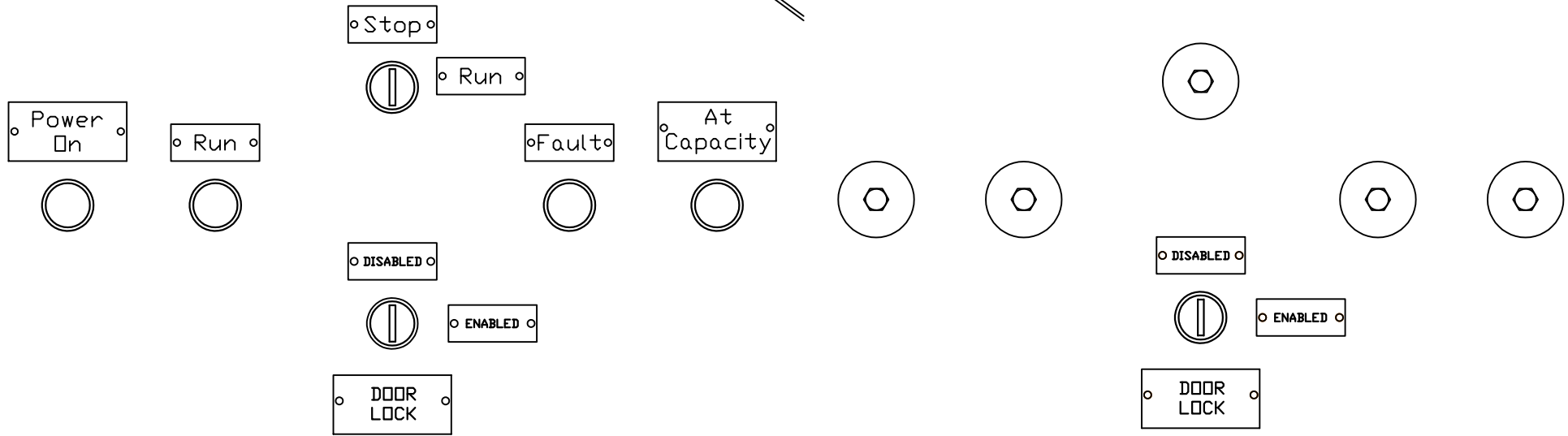
TCI® W132 N10611 Grant Drive Germantown, WI 53022

Submittal/Installation Dwg
 Active Filter, 50-100A, Type 3R

DRN. BY RHW	DATE 1/31/13	DWG. NO. 105201
SCALE N/A	SIZE A	SHT. 1 OF 2

OPTIONAL Door Operator Detail

NO Door Operators



TCI, LLC CLAIMS PROPRIETARY RIGHTS IN THE MATERIAL HEREIN DISCLOSED. IT IS SUPPLIED WITHOUT PREDJUDICE TO ANY PATENT RIGHTS OF TCI AND MAY NOT BE REPRODUCED OR USED TO MANUFACTURE ANYTHING SHOWN THEREIN WITHOUT WRITTEN PERMISSION FROM TCI.

NO	REVISION	DATE	BY	

TOLERANCES (EXCEPT AS NOTED)
DECIMAL
.XX ± .050
.XXX ± .025
FRACTIONAL ± 1/32
ANGULAR ± 1°

TCI[®] W132 N10611 Grant Drive
Germantown, WI 53022

Submittal/Installation Dwg
Active Filter, 50-100A, Type 3R

DRN. BY RHW	DATE 1/31/13	DWG. NO. 105201
SCALE N/A	SIZE A	SHT. 2 OF 2