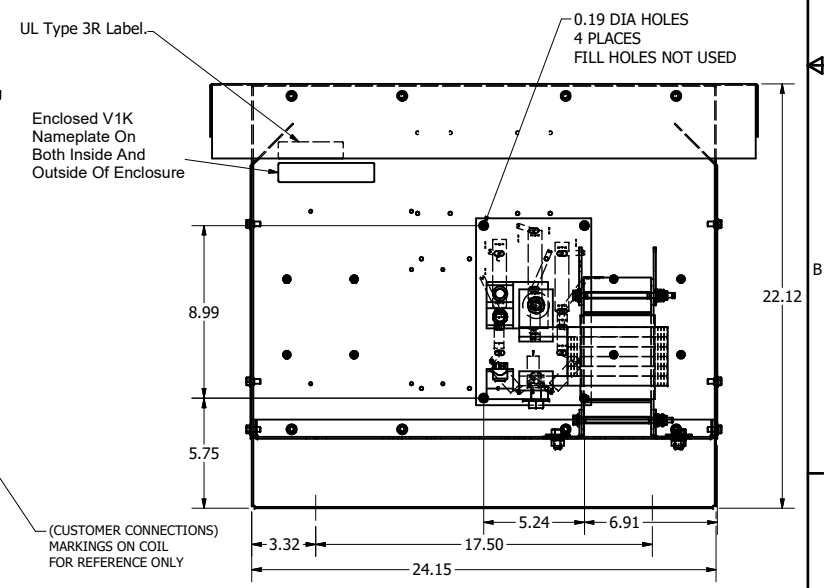
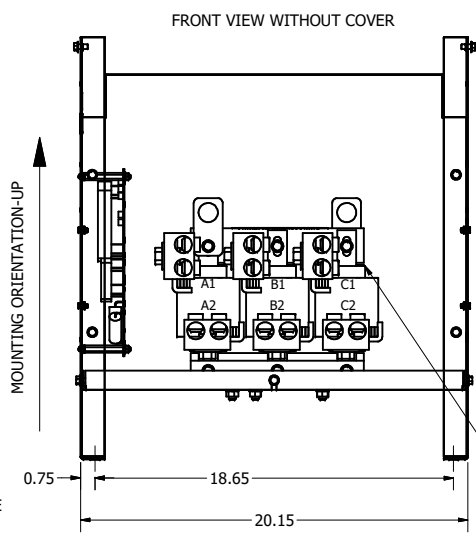
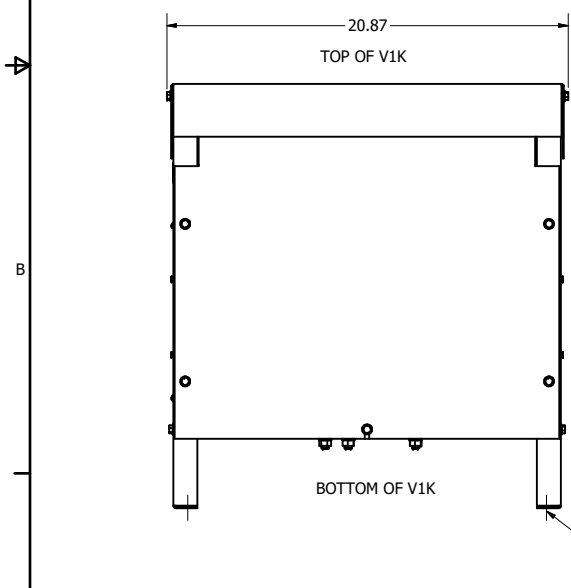
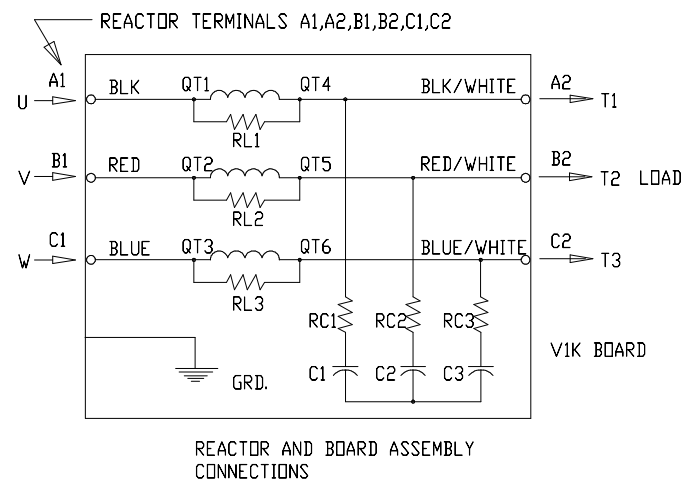
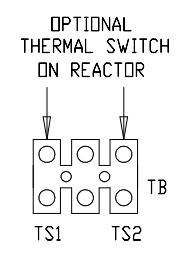
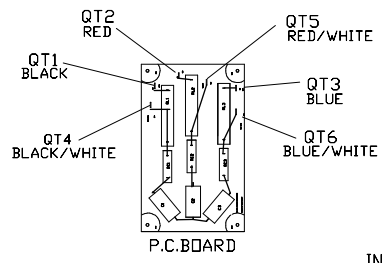
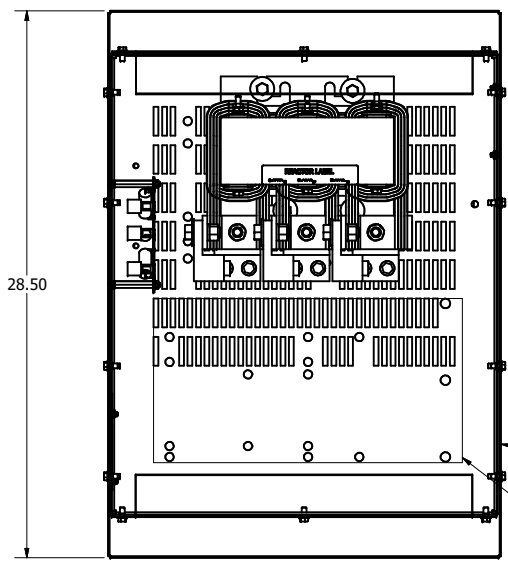



SEE V1K INSTALLATION GUIDE FOR TERMINAL WIRE SIZE AND TORQUE
 NOTE: MAINTAIN CLEARANCE OF 3 INCHES ON ALL SIDES TO OTHER EQUIPMENT

V1K Part Number	Max Voltage	Amps	Phase	Weight (LBS)
V1K480A03	600	480	3	161
V1K480A03EX	600	480	3	161



NOTE: USE ONLY HUBS OR FITTINGS THAT COMPLY WITH UL514B FOR TYPE 3R ENCLOSURES

Customer Is Responsible For Installation To Meet All National And Local Electrical Codes.
 Dimensions are in inches unless otherwise specified.
 Material(s) Shall be RoHS Compliant

THE INFORMATION AND DESIGNS CONTAINED IN THIS DRAWING ARE CONFIDENTIAL AND THE PROPRIETARY PROPERTY OF ALLIED MOTION TECHNOLOGIES INC. AND ITS SUBSIDIARIES. NEITHER THIS DESIGN NOR ANY INFORMATION CONTAINED IN THIS DRAWING MAY BE REPRODUCED OR DISCLOSED TO OTHERS WITHOUT THE EXPRESS WRITTEN CONSENT OF ALLIED MOTION TECHNOLOGIES INC. AND ITS SUBSIDIARIES.				TOLERANCES (EXCEPT AS NOTED) DECIMAL .XX ± .25 .XXX ± .10 FRACTIONAL ± 1/32 ANGULAR ± 1°				 W132N10611 (Rev 13) Rev 5 Germantown, WI 53022 © 2024 TCI, LLC An Allied Motion Company V1K, TYPE 3R 480 AMP 104238DG	
E	6892, Update Termination	12/4/2024	DSW						
D	6407 Updated Label Notes	09/11/23	JRN						
C	4658 Rated To Max Voltage	08/27/20	JRN						
B	4030 DRAWING UPDATE	6/30/17	JSM						
NO	REVISION	DATE	BY						