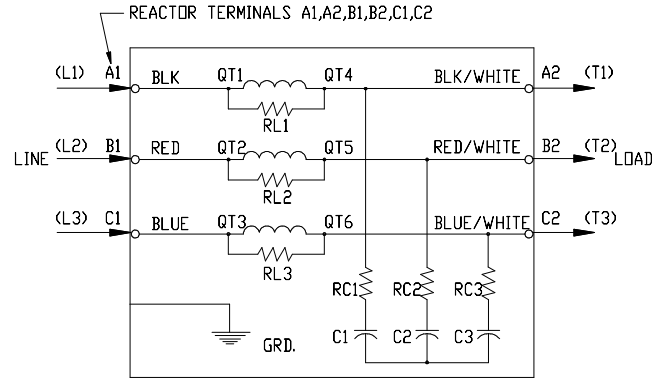
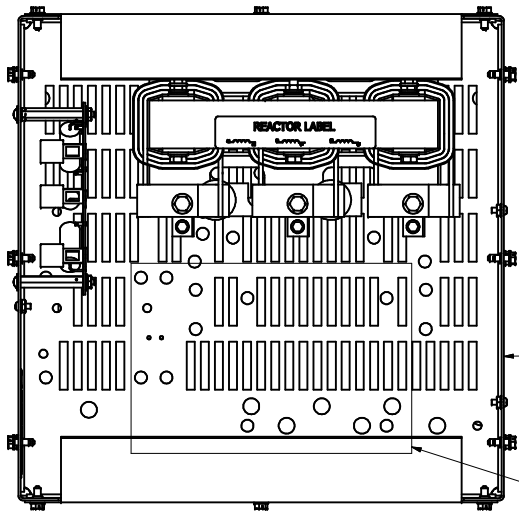


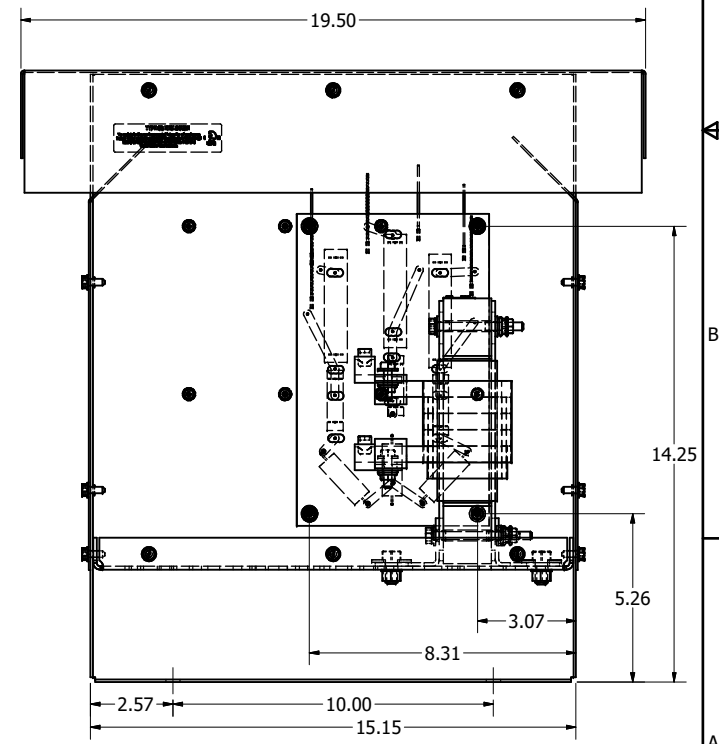
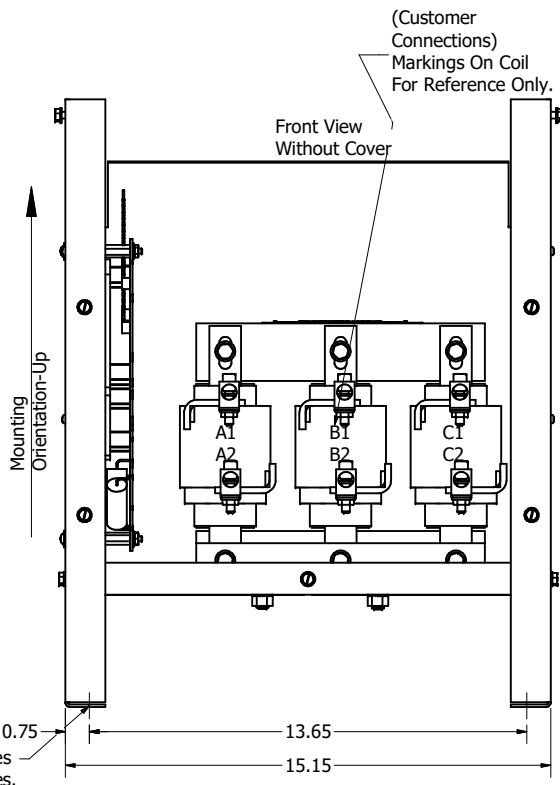
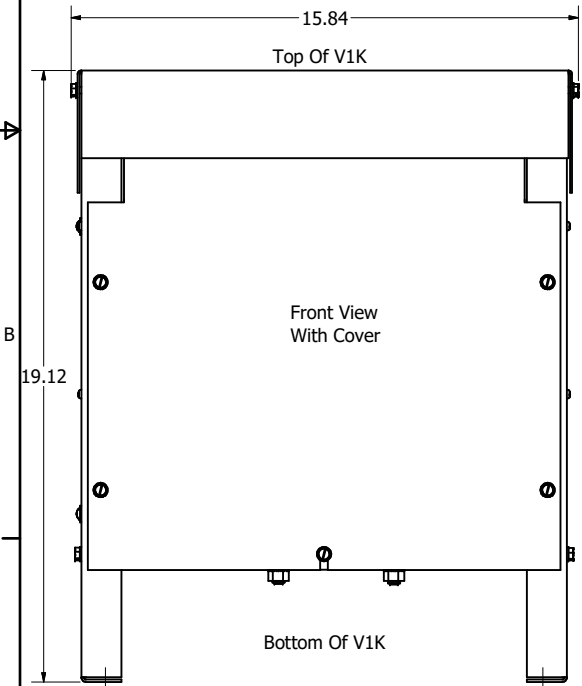
V1K Part Number	Max Voltage	Amps	Phase	Weight (LBS)
V1K130A03	600	130	3	89
V1K130A03EX	600	130	3	89

See V1K Installation Guide For Terminal Wire Size And Torque Information.

Note: Maintain Clearance of 3 Inches On All Sides To Other Equipment.



REACTOR AND BOARD ASSEMBLY CONNECTIONS



Material(s) Shall be RoHS Compliant


Customer Is Responsible For Installation to Meet All National And Local Electrical Codes.

NOTE: USE ONLY HUBS OR FITTINGS THAT COMPLY WITH UL514B FOR TYPE 3R ENCLOSURES

THE INFORMATION AND DESIGNS CONTAINED IN THIS DRAWING ARE CONFIDENTIAL AND THE PROPRIETARY PROPERTY OF ALLIED MOTION TECHNOLOGIES INC. AND ITS SUBSIDIARIES. NEITHER THIS DESIGN NOR ANY INFORMATION CONTAINED IN THIS DRAWING MAY BE REPRODUCED OR DISCLOSED TO OTHERS WITHOUT THE EXPRESS WRITTEN CONSENT OF ALLIED MOTION TECHNOLOGIES INC. AND ITS SUBSIDIARIES.

NO	REVISION	DATE	BY
F	6391, Inductor Updated	8/25/2023	DSW
E	4658 Rated To Max Voltage	08/27/20	JRN
D	4030, VIK DRAWING UPDATE	6/27/17	DSW

TOLERANCES (EXCEPT AS NOTED)	
DECIMAL	.XX ± .25 .XXX ± .10
FRACTIONAL	± 1/32
ANGULAR	± 1°


TCI W132N10611 (Rev 13) Feb 2023
 An Allied Motion Company © 2023 TCI, LLC
V1K Type 3R
 130 Amps
 DESIGNED BY: DSW DATE: 6/26/17
 DRAWN BY: DSW DATE: 6/26/17
 SCALE: TO FIT
104231DG
 SHEET 1 OF 1