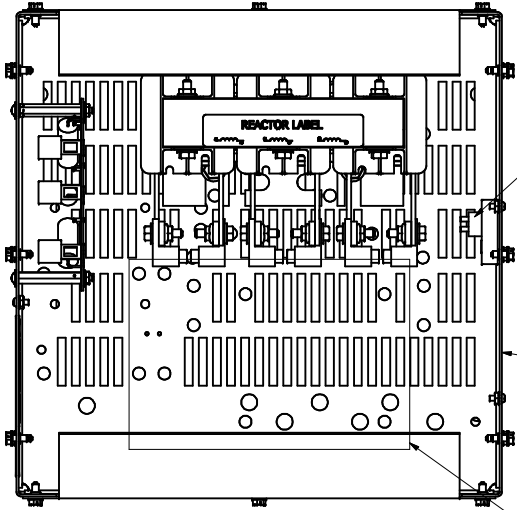


See V1K Installation Guide For Terminal Wire Size And Torque Information.

Note: Maintain Clearance of 3 Inches On All Sides To Other Equipment.

V1K Part Number	Max Voltage	Amps	Phase	Weight (LBS)
V1K110A03*	600	110	3	65
V1K110A03EX*	600	110	3	65

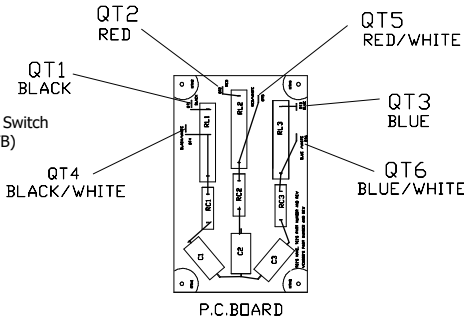
* = (Blank) - No Thermal Switch
* = T - Thermal Switch Option



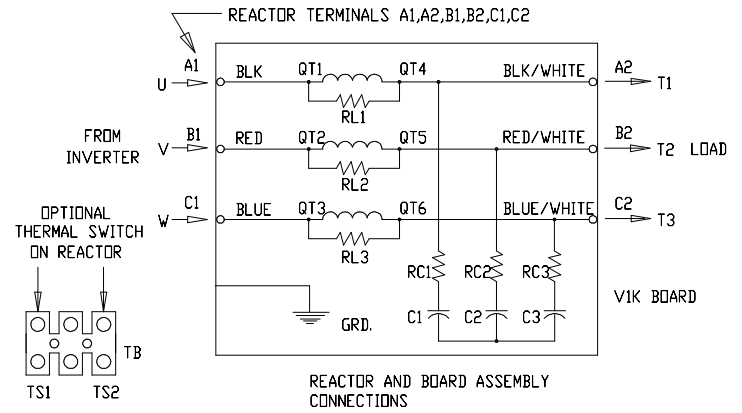
Optional Thermal Switch Terminal Block (TB)

Suggested Customer Entry Side Of Enclosure.

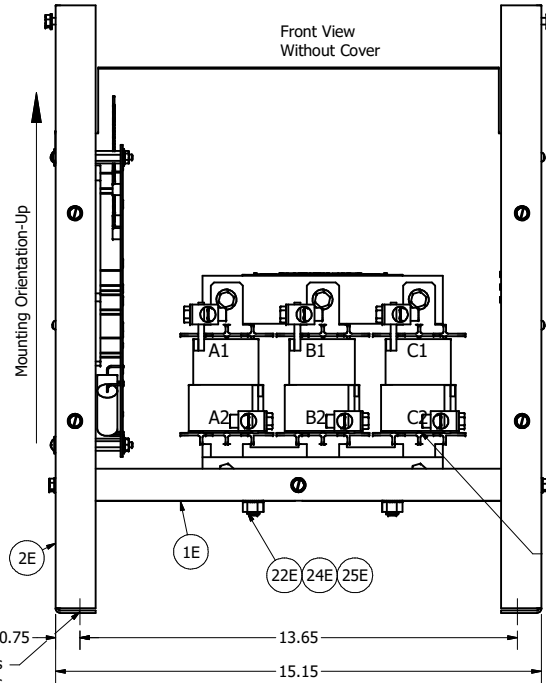
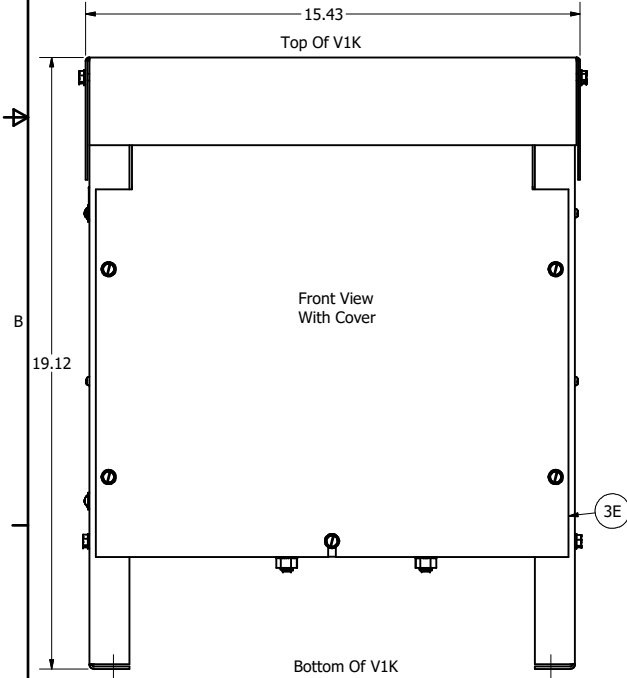
Suggested Customer Entry Bottom Of Enclosure.



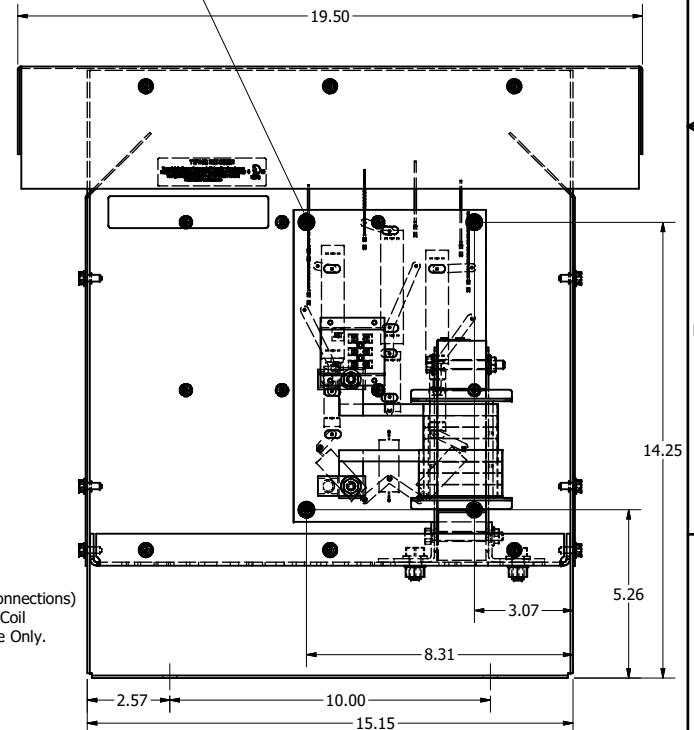
P.C. BOARD



0.19 DIA Holes
4 Places, Fill Unused Holes.



(Customer Connections) Markings On Coil For Reference Only.



Material(s) Shall be RoHS Compliant

Customer Is Responsible For Installation to Meet All National And Local Electrical Codes.

NOTE: USE ONLY HUBS OR FITTINGS THAT COMPLY WITH UL514B FOR TYPE 3R ENCLOSURES

THE INFORMATION AND DESIGNS CONTAINED IN THIS DRAWING ARE CONFIDENTIAL AND THE PROPRIETARY PROPERTY OF ALLIED MOTION TECHNOLOGIES INC. AND ITS SUBSIDIARIES. NEITHER THIS DESIGN NOR ANY INFORMATION CONTAINED IN THIS DRAWING MAY BE REPRODUCED OR DISCLOSED TO OTHERS WITHOUT THE EXPRESS WRITTEN CONSENT OF ALLIED MOTION TECHNOLOGIES INC. AND ITS SUBSIDIARIES.

NO	REVISION	DATE	BY
G	6516, Inductor Updated	12/12/2023	DSW
F	6407-1 Updated Labels	10/02/23	JRN
E	4658 Rated To Max Voltage	08/27/20	JRN
D	4030, VIK DRAWING UPDATE	6/27/17	DSW

TOLERANCES (EXCEPT AS NOTED)		DATE		SCALE	
DECIMAL		DATE		SCALE	
.XX ± .25		DATE		SCALE	
.XXX ± .10		DATE		SCALE	
FRACTIONAL		DATE		SCALE	
± 1/32		DATE		SCALE	
ANGULAR		DATE		SCALE	
± 1°		DATE		SCALE	

TCL W132N10611 (Rev 13) Feb
Germanstown, WI 53022
© 2023 TCI, LLC
An Allied Motion Company
VIK, Type 3R
110 Amps
DWN BY: JRN DATE: 06/26/17
SCALE: TO FIT DRAWN BY: JRN
104230DG
SHT. 1 OF 1