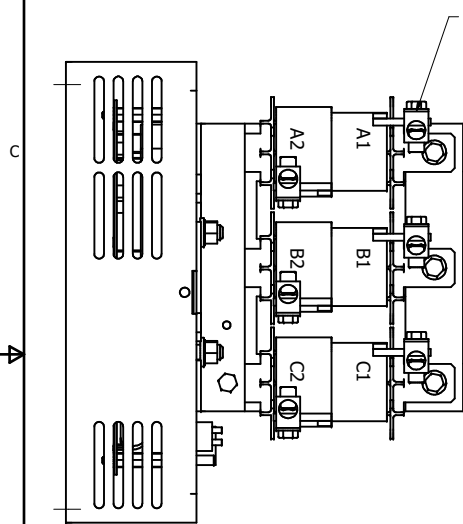
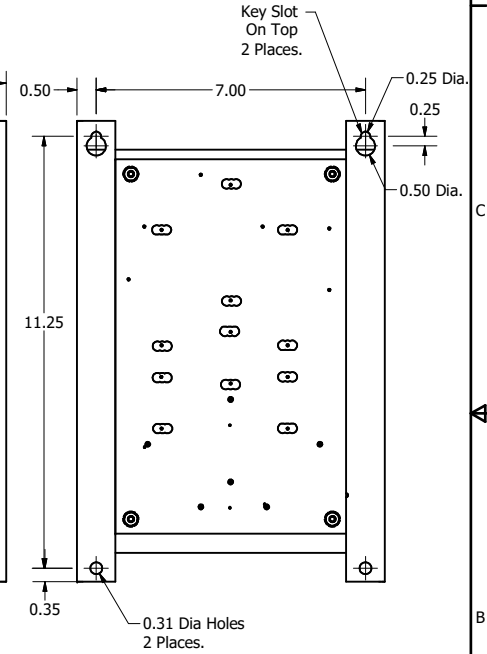
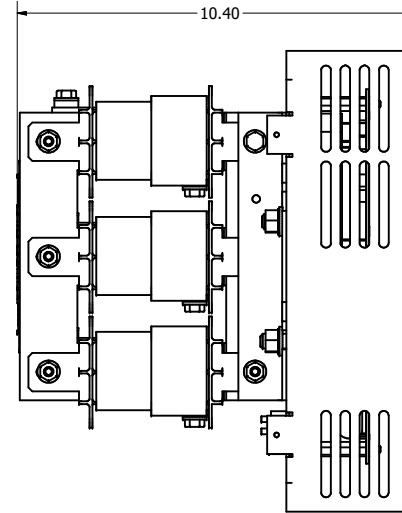
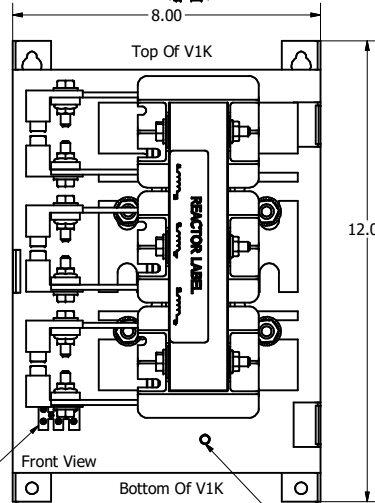
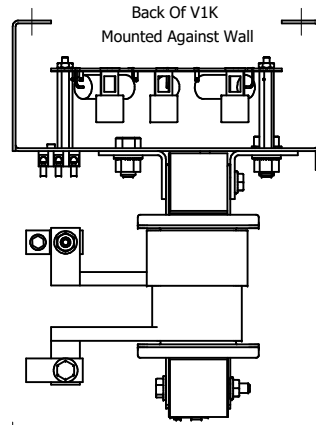
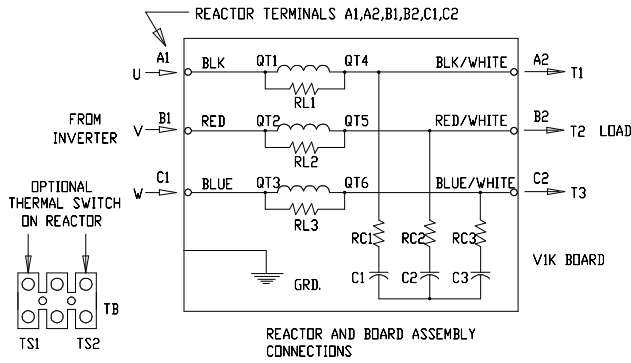


V1K Part Number	Max Voltage	Amps	Phase	Weight (LBS)
V1K110A00*	600	110	3	36
V1K110A00EX*	600	110	3	36

* = (Blank) - No Thermal Switch
 * = T - Thermal Switch Option

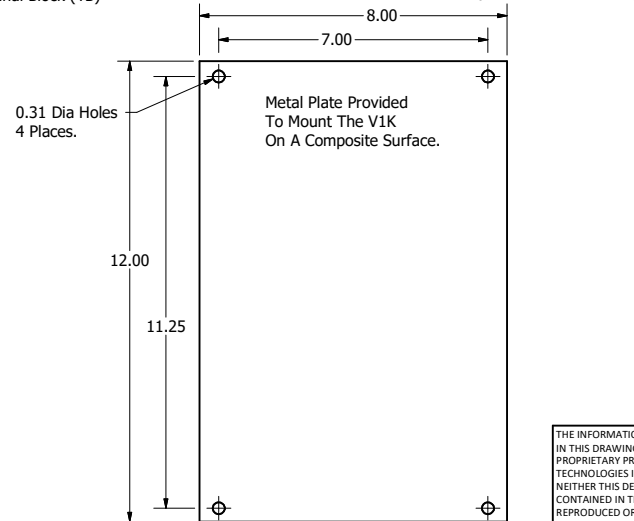
See V1K Installation Guide For Terminal Wire Size And Torque Information.

Note: Maintain Clearance of 3 Inches On All Sides To Other Equipment.



(Customer Connections) Markings On Coil For Reference Only.

Optional Thermal Switch Terminal Block (TB)




Customer Is Responsible For Installation To Meet All National And Local Electrical Codes. Material(s) Shall be RoHS Compliant

THE INFORMATION AND DESIGNS CONTAINED IN THIS DRAWING ARE CONFIDENTIAL AND THE PROPRIETARY PROPERTY OF ALLIED MOTION TECHNOLOGIES INC. AND ITS SUBSIDIARIES. NEITHER THIS DESIGN NOR ANY INFORMATION CONTAINED IN THIS DRAWING MAY BE REPRODUCED OR DISCLOSED TO OTHERS WITHOUT THE EXPRESS WRITTEN CONSENT OF ALLIED MOTION TECHNOLOGIES INC. AND ITS SUBSIDIARIES.

NO	REVISION	DATE	BY	SCALE	TO FIT
J	6516, Inductor Updated	12/12/2023	DSW		
I	5898 Add T/S Option, Update Schematic	03/29/22	JRN		
H	4658 Rated To Max Voltage	03/04/19	JRN		
G	4030, Combine V1k Drawings	6/7/17	DSW		
NO	REVISION	DATE	BY	SCALE	TO FIT

TOLERANCES (EXCEPT AS NOTED)		DECIMAL		FRACTIONAL	
.XX	± .25	1/32	± 1/32		
.XXX	± .10	ANGULAR	± 1°		


 W132N10611 (Rev 13 Feb 2023)
 Germerman, WI 53012
 © 2023 TCI, LLC
 An Allied Motion Company
 V1K Open,
 110 Amps
 DWN BY: DSW DATE: 4/26/17
 SCALE: TO FIT
 102650DG
 SHEET 1 OF 1