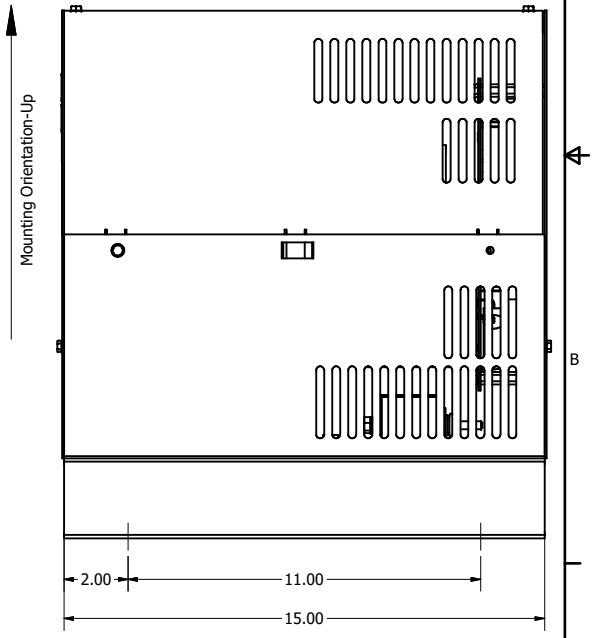
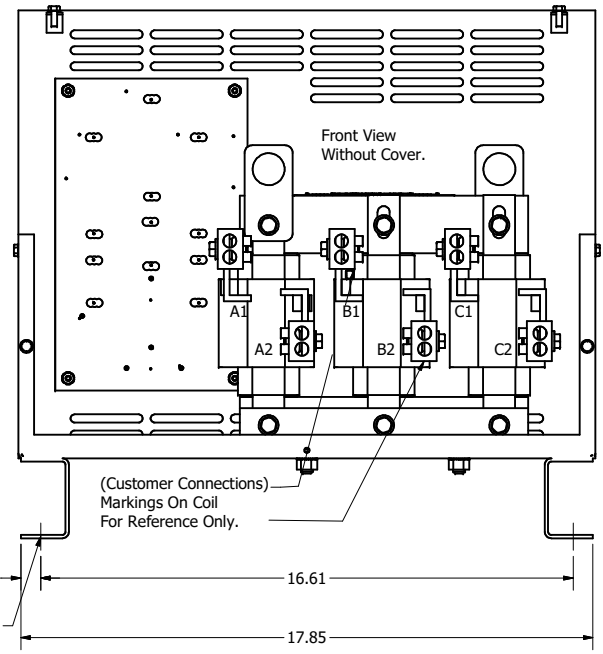
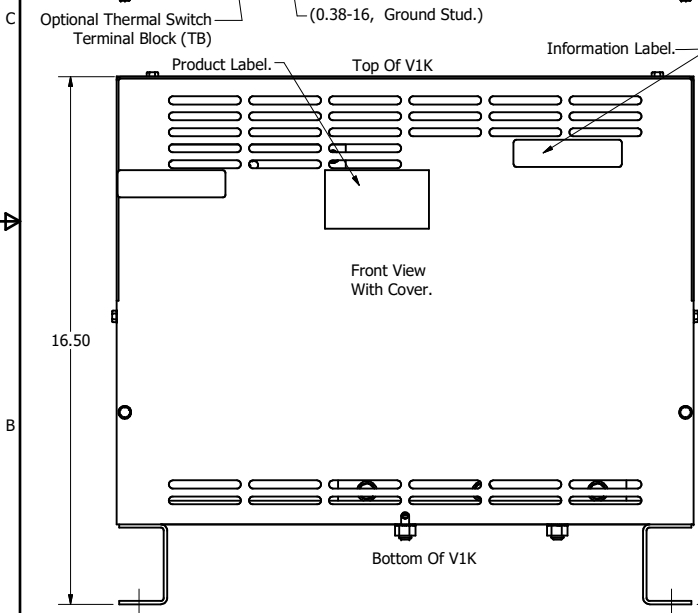
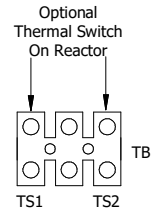
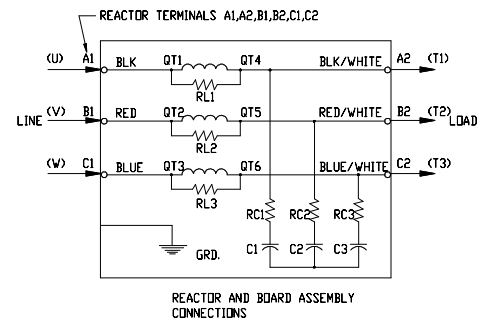



V1K Part Number	Max Voltage	Amps	Phase	Weight (LBS)
V1K200A01*	600	200	3	93
V1K200A01EX*	600	200	3	93
V1K250A01*	600	250	3	93
V1K250A01EX*	600	250	3	93

* = (Blank) - No Thermal Switch
* = T - Thermal Switch Option



Customer Is Responsible For Installation To Meet All National And Local Electrical Codes.

Material(s) Shall be RoHS Compliant

THE INFORMATION AND DESIGNS CONTAINED IN THIS DRAWING ARE CONFIDENTIAL AND THE PROPRIETARY PROPERTY OF ALLIED MOTION TECHNOLOGIES INC. AND ITS SUBSIDIARIES. NEITHER THIS DESIGN NOR ANY INFORMATION CONTAINED IN THIS DRAWING MAY BE REPRODUCED OR DISCLOSED TO OTHERS WITHOUT THE EXPRESS WRITTEN CONSENT OF ALLIED MOTION TECHNOLOGIES INC. AND ITS SUBSIDIARIES.				TOLERANCES (EXCEPT AS NOTED)		 <small>W132N10611 (Rev 1) Feb 2022</small> <small>Germanstown, WI 53022</small> <small>© 2022 TCI, LLC</small>	
J	5908 Updated Part Numbers	04/13/2022	JRN	DECIMAL	.XX ± .25	V1K Enclosed, Type 1 200Amps, 250Amps	
I	5845 Added T/S Option	01/31/22	JRN	DECIMAL	.XXX ± .10		
H	4658 Rated To Max Voltage	03/04/19	JRN	FRACTIONAL	± 1/32	<small>DRN BY: DSW DATE: 4/26/17 FILE: 102410DG</small> <small>SCALE: TO FIT REVISED: CSE SHEET 1 OF 1</small>	
G	4030, Combine, Update V1K Drawings	6/23/17	DSW	ANGULAR	± 1°		
NO	REVISION	DATE	BY				