

Dear Valued Customer,

TCI is announcing an end of life (EOL) and last time buy (LTB) date for KDR B-Frame products. The part number change to KDRBA will utilize a new frame changing the fit on the terminal block. The form and function remain the same. Affected parts can be identified by the first characters of the part numbers: KDRB\_\_ . Existing customers may place orders per the key dates listed below and guidelines listed in this notification. As of this EOL issues date, TCI will no longer accept customer orders with a requested delivery date beyond the Last Ship Date. TCI will handle warranty claims made past the LTB date per TCIs Limited Warranty Policy guidelines. TCI will continue to provide Technical Support for the life of the affected products.

***EOL Issue Date: 4/30/26***

***Last Time Buy Date: 7/31/26***

***Last Ship Date: 12/31/26***

***Reason for Change***

Manufacturing improvements to the reactor frame have replaced the KDR B frame reactors.

***Product Identification***

This EOL notification affects all KDR B-Frame reactors from 208-690V ratings.

The following tables list the specific parts being affected by this EOL notification.

Table 1 - 208/240V KDRB vs KDRBA Low & High Impedance Reactors

Table 2 - 480V KDRB vs KDRBA Low & High Impedance Reactors

Table 3 - 575/600V KDRB vs KDRBA Low & High Impedance Reactors



	Open		Type 1		Type 3R		Din Rail	
	Obsolete Part Number	New Part Number	Obsolete Part Number	New Part Number	Obsolete Part Number	New Part Number	Obsolete Part Number	New Part Number
208/240 V	KDRB22L	KDRBA22L	KDRB22LE01	KDRBA22LE01	KDRB22LE3R	KDRBA22LE3R	KDRB22LDR	KDRBA22LDR
	KDRB23L	KDRBA23L	KDRB23LE01	KDRBA23LE01	KDRB23LE3R	KDRBA23LE3R	KDRB23LDR	KDRBA23LDR
	KDRB25H	KDRBA25H	KDRB25HE01	KDRBA25HE01	KDRB25HE3R	KDRBA25HE3R	KDRB25HDR	KDRBA25HDR
	KDRB26H	KDRBA26H	KDRB26HE01	KDRBA26HE01	KDRB26HE3R	KDRBA26HE3R	KDRB26HDR	KDRBA26HDR

Table 1 - 208/240V KDRB Vs KDRBA Low & High Impedance Reactors

	Open		Type 1		Type 3R		Din Rail	
	Obsolete Part Number	New Part Number	Obsolete Part Number	New Part Number	Obsolete Part Number	New Part Number	Obsolete Part Number	New Part Number
480 V	KDRB2L	KDRBA2L	KDRB2LE01	KDRBA2LE01	KDRB2LE3R	KDRBA2LE3R	KDRB2LDR	KDRBA2LDR
	KDRB1L	KDRBA1L	KDRB1LE01	KDRBA1LE01	KDRB1LE3R	KDRBA1LE3R	KDRB1LDR	KDRBA1LDR
	KDRB2H	KDRBA2H	KDRB2HE01	KDRBA2HE01	KDRB2HE3R	KDRBA2HE3R	KDRB2HDR	KDRBA2HDR

Table 2 - 480V KDRB Vs KDRBA Low & High Impedance Reactors



575/600 V	Open		Type 1		Type 3R		Din Rail	
	Obsolete Part Number	New Part Number	Obsolete Part Number	New Part Number	Obsolete Part Number	New Part Number	Obsolete Part Number	New Part Number
	KDRB45L	KDRBA45L	KDRB45LE01	KDRBA45LE01	KDRB45LE3R	KDRBA45LE3R	KDRB45LDR	KDRBA45LDR
	KDRB44L	KDRBA44L	KDRB44LE01	KDRBA44LE01	KDRB44LE3R	KDRBA44LE3R	KDRB44LDR	KDRBA44LDR
	KDRB43L	KDRBA43L	KDRB43LE01	KDRBA43LE01	KDRB43LE3R	KDRBA43LE3R	KDRB43LDR	KDRBA43LDR
	KDRB42H	KDRBA42H	KDRB42HE01	KDRBA42HE01	KDRB42HE3R	KDRBA42HE3R	KDRB42HDR	KDRBA42HDR
	KDRB43H	KDRBA43H	KDRB43HE01	KDRBA44HE01	KDRB43HE3R	KDRBA44HE3R	KDRB43HDR	KDRBA44HDR
	KDRB44H	KDRBA44H	KDRB44HE01	KDRBA43HE01	KDRB44HE3R	KDRBA43HE3R	KDRB44HDR	KDRBA43HDR

Table 3 – 575/600V KDRB Vs KDRBA Low & High Impedance Reactors



## Impact on Form, Fit, Function, Quality, Reliability.

The new KDR BA frame reactors have been updated to improve manufacturability. The new KDR BA reactors Form and Function remain unchanged from the now obsolete KDR B frame, while the fit has been changed slightly. The connection terminal block has changed from one 6-position terminal block to three 2-position terminal blocks spaced 0.83 inches apart. This is illustrated in figure 3 and figure 4 below.

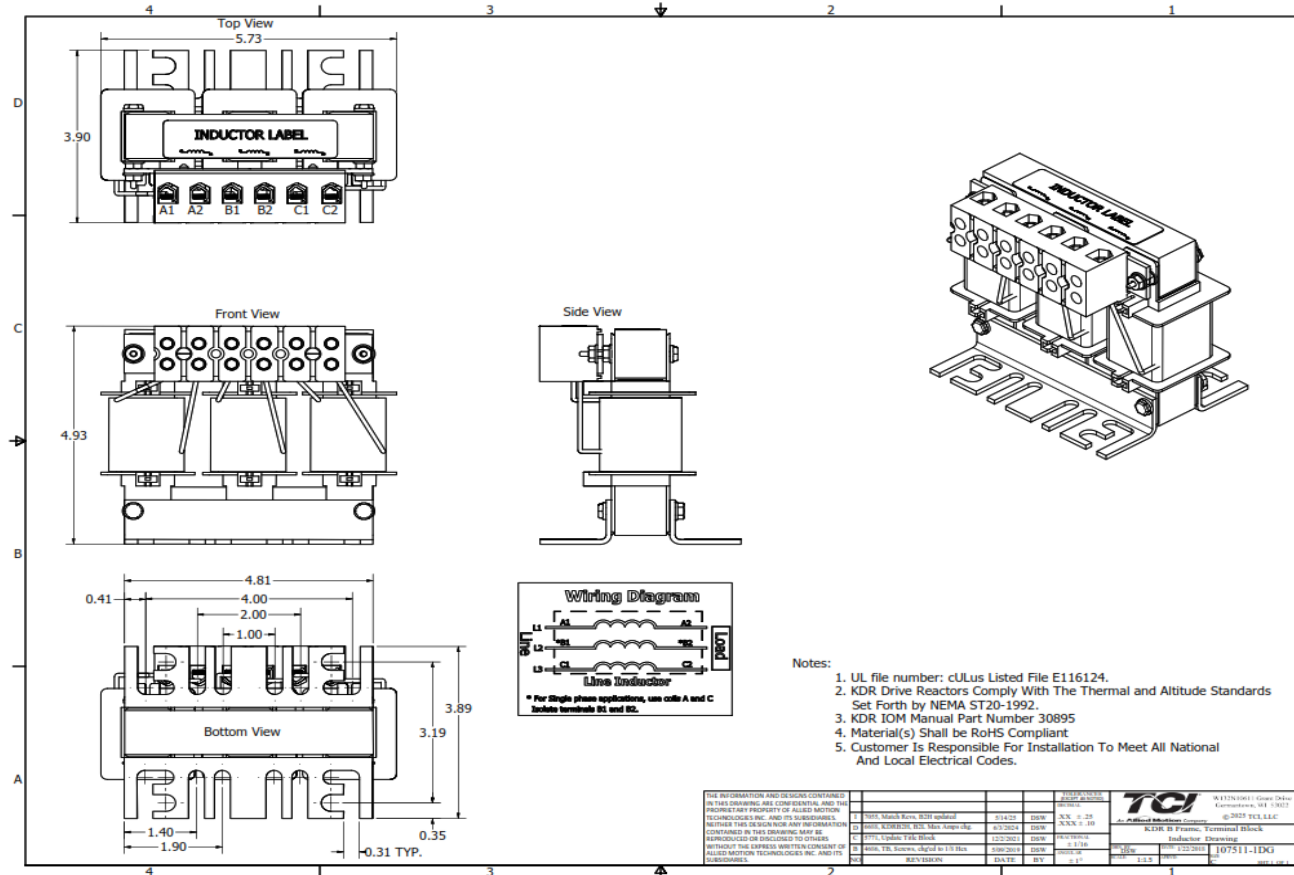


Figure 1 : Old KDRB Frame



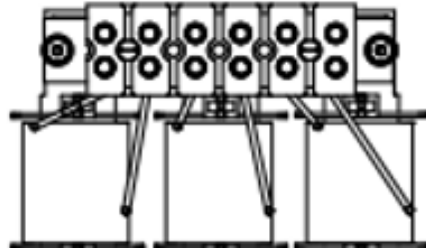


Figure 3 : Old Terminal Block

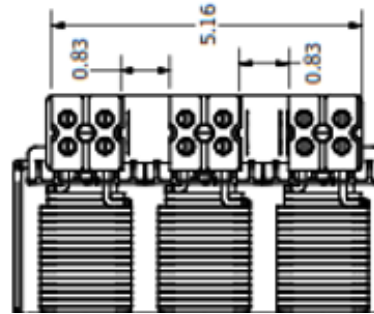


Figure 4 : New Terminal Block

If you have any questions about this EOL notification, please contact your TCI sales representative. A list of TCI sales representatives is available at [www.transcoil.com/contact/where-to-buy/](http://www.transcoil.com/contact/where-to-buy/)

*Josh Haase*

Josh Hasse  
Allient TCI, Director- Marketing and Product

