
Product Change Notification 0034

Issue Date: 11/25/25

DESCRIPTION OF CHANGE:

The V1K filter reactor has been updated from 16-27 amps with a new more robust reactor design. The change applies to all versions including standard, thermal switch, and EX options. Terminal blocks have been changed from one 6 position terminal block to three 2 position terminals spaced 0.83 inches apart. Dimensionally the height of the open panel filter has increased from 8.18 to 8.25 inches.

PRODUCT CATEGORY:

16–27 amp V1K Output dV/dt Filters for standard, thermal switch, and EX options.

PART NUMBERS / SERIES / FAMILIES AFFECTED:

Amps	Enclosure Type		
	Open	Type 1	Type 3R
16	V1K16A00	V1K16A01	V1K16A03
18	V1K18A00	V1K18A01	V1K18A03
21	V1K21A00	V1K21A01	V1K21A03
25	V1K25A00	V1K25A01	V1K25A03
27	V1K27A00	V1K27A01	V1K27A03

Note: Includes _EX, _T and _EXT part numbers

CLASSIFICATION OF CHANGE:

Replacement with better performance.

REASON FOR CHANGE:

New filter reactor design.

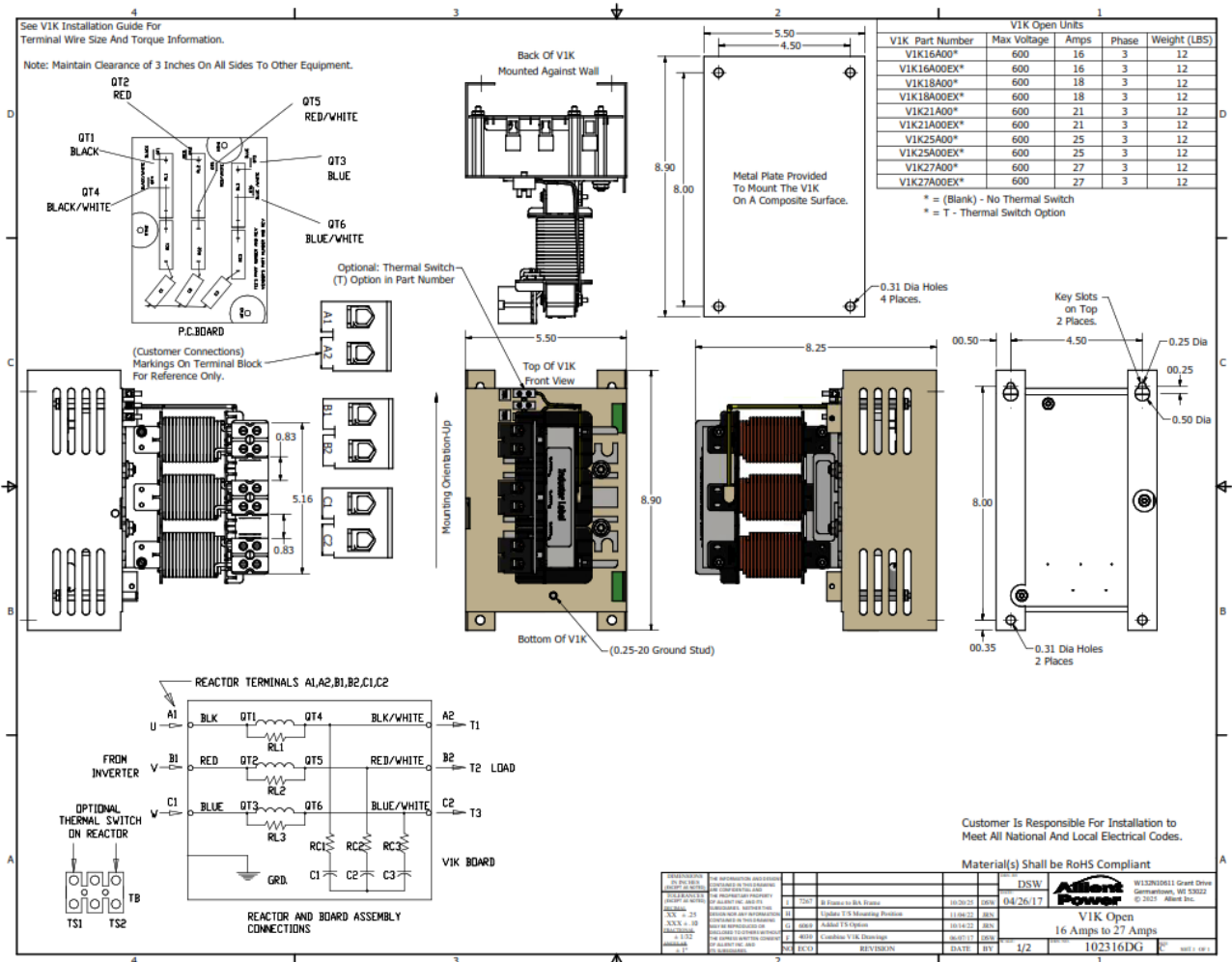


Figure 1 : New V1K 16-27 Amps

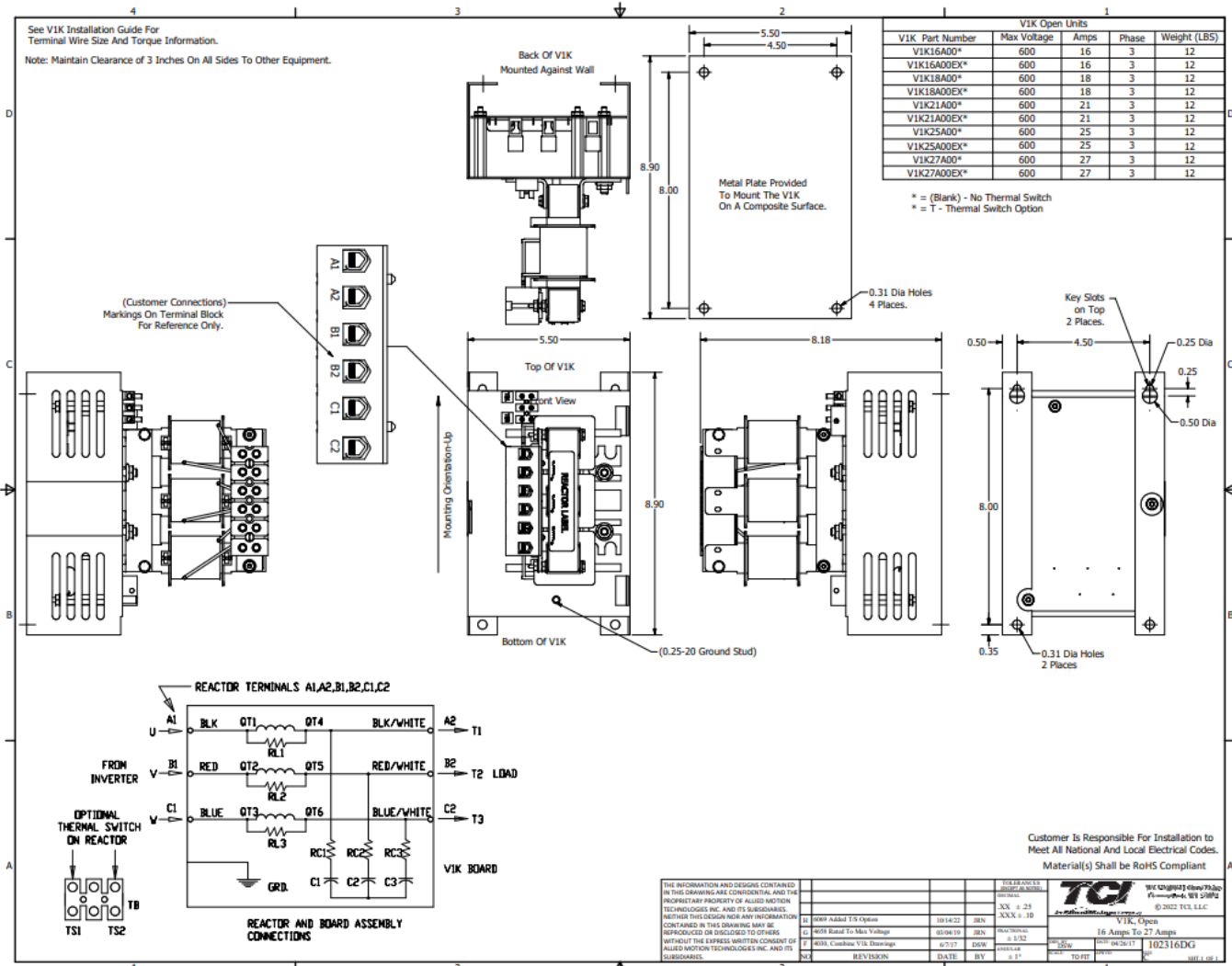


Figure 2 : Old V1K 16-27 Amps

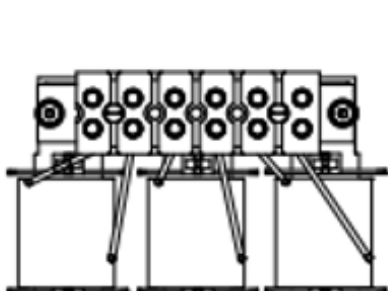


Figure 3 : Old Terminal Block

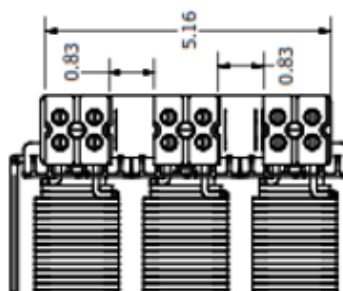


Figure 4 : New Terminal Block

EXPECTED INFLUENCE ON QUALITY/RELIABILITY/PERFORMANCE:

No change to the V1K's performance. The new reactor frame ensures a higher quality build and ease of manufacturing

TIME SCHEDULE:

Changes will occur immediately based on stock availability.

PRODUCT IDENTIFICATION:

No change, please continue to order the same part numbers as described in the *Part Numbers Affected* section.

Open Configuration:

The change results in no change to the panel mounting dimensions (W, D) of the open configurations in the affected product range. There is a change to the high by 0.07 inches.

New Dimensions (H,W,D) 8.25", 5.5", 8.9"

Old Dimensions (H,W,D) 8.18", 5.5", 8.9"

Type 1 Configuration:

The change results in no change to the enclosure mounting dimensions of the Type 1 configurations in this range.

Type 3R Configuration:

The change results in no change to the enclosure mounting dimensions of the Type 3R configurations in this range.

This PCN is considered approved without any further notification. Returns based on change to prior design will not be accepted.

Josh Haase

ISSUED BY: Josh Haase, TCI Director of Marketing

For further information, please contact your TCI Regional Sales Manager or Marketing Team at marketing@transcoil.com.