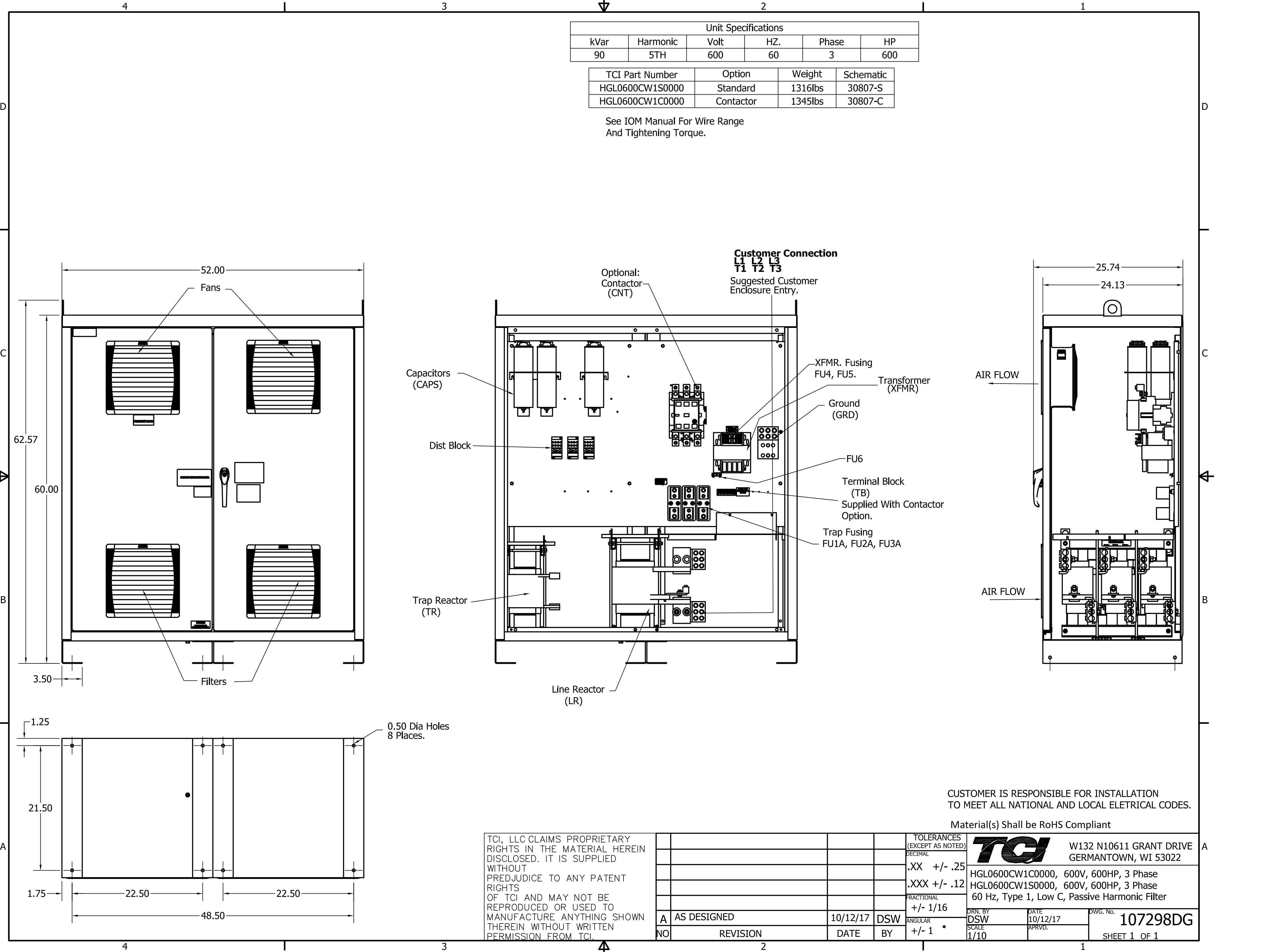


Unit Specifications					
kVar	Harmonic	Volt	HZ.	Phase	HP
90	5TH	600	60	3	600

TCI Part Number	Option	Weight	Schematic
HGL0600CW1S0000	Standard	1316lbs	30807-S
HGL0600CW1C0000	Contactora	1345lbs	30807-C

See IOM Manual For Wire Range
And Tightening Torque.



CUSTOMER IS RESPONSIBLE FOR INSTALLATION
TO MEET ALL NATIONAL AND LOCAL ELECTRICAL CODES.

Material(s) Shall be RoHS Compliant

TCI, LLC CLAIMS PROPRIETARY RIGHTS IN THE MATERIAL HEREIN DISCLOSED. IT IS SUPPLIED WITHOUT PREDJUDICE TO ANY PATENT RIGHTS OF TCI AND MAY NOT BE REPRODUCED OR USED TO MANUFACTURE ANYTHING SHOWN THEREIN WITHOUT WRITTEN PERMISSION FROM TCI.

TOLERANCES (EXCEPT AS NOTED)			
DECIMAL			
	.XX	+/-	.25
	.XXX	+/-	.12
FRACTIONAL			
	+/-	1/16	
ANGULAR			
	+/-	1	°

NO	REVISION	DATE	BY
A	AS DESIGNED	10/12/17	DSW

TCI W132 N10611 GRANT DRIVE
GERMANTOWN, WI 53022

HGL0600CW1C0000, 600V, 600HP, 3 Phase
HGL0600CW1S0000, 600V, 600HP, 3 Phase
60 Hz, Type 1, Low C, Passive Harmonic Filter

DRN. BY: DSW DATE: 10/12/17 DWG. No.: 107298DG
SCALE: 1/10 APRVD. SHEET 1 OF 1